

ICPSR 34884

Annual Survey of Jails: Jail-Level Data, 2012

*United States Department of Justice.
Office of Justice Programs. Bureau of
Justice Statistics*

Codebook

Inter-university Consortium for
Political and Social Research
P.O. Box 1248
Ann Arbor, Michigan 48106
www.icpsr.umich.edu

Terms of Use

The terms of use for this study can be found at:
<http://www.icpsr.umich.edu/icpsrweb/ICPSR/studies/34884/terms>

Information about Copyrighted Content

Some instruments administered as part of this study may contain in whole or substantially in part contents from copyrighted instruments. Reproductions of the instruments are provided as documentation for the analysis of the data associated with this collection. Restrictions on "fair use" apply to all copyrighted content. More information about the reproduction of copyrighted works by educators and librarians is available from the United States Copyright Office.

NOTICE

WARNING CONCERNING COPYRIGHT RESTRICTIONS

The copyright law of the United States (Title 17, United States Code) governs the making of photocopies or other reproductions of copyrighted material. Under certain conditions specified in the law, libraries and archives are authorized to furnish a photocopy or other reproduction. One of these specified conditions is that the photocopy or reproduction is not to be "used for any purpose other than private study, scholarship, or research." If a user makes a request for, or later uses, a photocopy or reproduction for purposes in excess of "fair use," that user may be liable for copyright infringement.

Table of Contents

Study Description.....	4
Citation.....	4
Study Scope.....	4
Subject Information.....	4
Abstract.....	4
Summary Data Description.....	5
Methodology and Processing.....	6
Data Collection Methodology.....	6
Data Appraisal Information.....	9
Data Access.....	11
Dataset Availability.....	11
Data Use Statement.....	11
File Description.....	12
ASJ 2012 Data.....	12
Variable Description.....	13
ASJ 2012 Data.....	14

Study Description

Citation

Title Statement

Title: Annual Survey of Jails: Jail-Level Data, 2012

Alternative Title: ASJ 2012

Identification No.: 34884

Responsibility Statement

Authoring Entity: United States Department of Justice. Office of Justice Programs. Bureau of Justice Statistics

Production Statement

Producer: Inter-university Consortium for Political and Social Research

Place of Production: Ann Arbor, MI: Inter-university Consortium for Political and Social Research

Series Statement

Series Name: Annual Survey of Jails: Jail-Level Data Series

Series Information:

The Annual Survey of Jails, formerly titled National Survey of Jails, is the only data collection effort that provides an annual source of data on local jails and jail inmates. The series was begun in 1982 by the Bureau of Justice Statistics with data collected by the Bureau of the Census. Local jails are locally-operated correctional facilities that confine persons before or after adjudication. Inmates sentenced to jails usually have a sentence of a year or less, but jails also incarcerate persons in a wide variety of other categories. Data on the size of the jail population and selected inmate characteristics are obtained every five to six years from the Census of Jails. In each of the years between the full censuses, a sample survey of jails is conducted to estimate baseline characteristics of the nation's jails and inmates housed in these jails. Data are supplied on admissions and releases, growth in the number of jail facilities, changes in their rated capacities and level of occupancy, growth in the population supervised in the community, changes in methods of community supervision, and crowding issues. The data are intended for a variety of users, including federal and state agencies, local officials in conjunction with jail administrators, researchers, planners, and the public.

Years Produced: Annually, except every 5 or 6 years when the National Jail Census is produced.

Bibliographic Citation

U.S. Dept. of Justice. Office of Justice Programs. Bureau of Justice Statistics. ANNUAL SURVEY OF JAILS: JAIL-LEVEL DATA, 2012 [Computer file]. Conducted by U.S. Dept. of Commerce, Bureau of the Census. ICPSR34884-v1. Ann Arbor, MI: Inter-university Consortium for Political and Social Research [producer and distributor].

Study Scope

Subject Information

Keyword(s): correctional facilities, correctional system, demographic characteristics, jail inmates, jails, overcrowding effects, population characteristics, probation

Topic Classification(s): Social Institutions and Behavior, Crime and the Criminal Justice System

Abstract

The Annual Survey of Jails (ASJ) is the only data collection effort that provides an annual source of data on local jails and jail inmates. Data on the size of the jail population and selected inmate characteristics are obtained every five to six years from the Census of Jails. In

- Study 34884 -

each of the years between the full censuses, a sample survey of jails is conducted to estimate baseline characteristics of the Nation's jails and inmates housed in these jails. The 2012 Annual Survey of Jails is the 25th such survey in a series begun in 1982.

The ASJ supplies data on characteristics of jails such as admissions and releases, growth in the number of jail facilities, changes in their rated capacities and level of occupancy, growth in the population supervised in the community, changes in methods of community supervision, and crowding issues. The ASJ also provides information on changes in the demographics of the jail population, supervision status of persons held, and a count of Non-U.S. Citizens in custody.

Starting in 2010, BJS enhanced the ASJ survey instruments to address topics on the number of convicted inmates that are unsentenced or sentenced and the number of unconvicted inmates awaiting trial/arraignment, or transfers/holds for other authorities. In order to reduce respondent burden, the ASJ no longer collects data on conviction status by sex. Also new to the survey, data are collected on jails' operational capacity and design capacity. Incorporating enhanced capacity measurements enables BJS to describe more accurately the variation and volatility of inmate bed space and crowding, especially as they relate to safety and security in jails.

To address more directly issues related to overcrowding and safety and security in jails, BJS started collecting data on staff and assaults against staff from the largest jails. In the modifications to the ASJ, starting in 2010, 335 jail jurisdictions (370 respondents) included with certainty (stratum 1 and 12) in the ASJ sample survey were asked to provide additional information (forms CJ-5D or CJ-5DA) on the flow of inmates going through jails and the distribution of time served, staff characteristics and assaults on staff resulting in death, and inmate misconduct.

The data presented in this study were collected in the Annual Survey of Jails, 2012. These data are used to track growth in the number of jails and the capacities nationally, changes in the demographics of the jail population and supervision status of persons held, the prevalence of crowding issues, and a count of non-U.S. citizens within the jail population. The data are intended for a variety of users, including Federal and State agencies, local officials in conjunction with jail administrators, researchers, planners, and the public. The reference date for the survey is June 29, 2012.

Jails are locally-operated correctional facilities that confine persons before or after adjudication. Inmates sentenced to jails usually have a sentence of a year or less, but jails also incarcerate persons in a wide variety of other categories. Local jails:

- receive individuals pending arraignment and hold them awaiting trial, conviction, or sentencing,
- readmit probation, parole, and bail-bond violators and absconders,
- temporarily detain juveniles pending transfer to juvenile authorities,
- hold mentally ill persons pending their movement to appropriate health facilities,
- hold individuals for the military, for protective custody, for contempt, and for the courts as witnesses,
- release convicted inmates to the community upon completion of sentence,
- transfer inmates for Federal, State, or other authorities,
- house inmates for Federal, State, or other authorities because of crowding of their facilities,
- relinquish custody of temporary detainees to juvenile and medical authorities,
- sometimes operate community-based programs as alternatives to incarceration,
- and hold inmates sentenced to short terms (generally less than one year).

Summary Data Description

Time Period: July 1, 2011 - June, 30, 2012

Date(s) of Collection: June, 2012 - November, 2012

Country: United States

Geographic Coverage: United States

Geographic Unit: City and County

Unit of Analysis: Jail facilities

Universe: All sampled jail jurisdictions (i.e., counties, municipalities, boroughs, etc.) identified from the 2005 Census of Jail Inmates.

Kind of Data: Survey data

Notes

DEFINITION OF TERMS

The following are terms used in the codebook:

- **Local jail:** A confinement facility usually administered by a local law enforcement agency, intended for adults but sometimes also containing juveniles, that holds persons detained pending adjudication and/or persons committed after adjudication for sentences usually a year or less. Excluded from the survey are temporary holding or lockup facilities that are not part of a combined function of a jail jurisdiction, from which inmates are usually transferred within 72 hours and not held beyond arraignment.
- **Jurisdiction:** A county (parish in Louisiana), municipality, township, or regional authority that administers one or more local jails.
- **Regional jail:** A jail in which two or more jurisdictions have a formal agreement to operate the facility.
- **Juvenile:** A person subject to the exercise of juvenile court jurisdiction for the purposes of adjudication and treatment based on the age and offense limitations as defined by state law. For the purposes of this report, a person of juvenile age is considered a juvenile even though they may be tried as an adult in criminal court.
- **Adult criminal offender:** A person subject to the original jurisdiction of the criminal court rather than the juvenile court because at the time of the offense the person was above a statutory age limit.
- **Average daily population:** To calculate the average daily population respondents were instructed to add the number of persons for each day during the period July 1, 2011 to June 30, 2012, and to divide the result by 366.

Notes

JAIL IDENTIFICATION (JURDID) AND THE FEDERAL INFORMATION PROCESSING STANDARDS (FIPS CODE)

The first 9 digits of the jail identification code (JURDID) are the government identification codes that the U.S. Census Bureau uses to identify governments in the United States. The GID maintains the name and unique identification code for all local governments in the United States, based on the 2009 Census of Governments and is the Census Bureau's master list of all governments in the United States. The GID code identifies the location of governments, whether they are state, county, city, place, or municipality.

An alternative scheme for identifying places is the Federal Information Processing Standards (or FIPS) codes, which are a standardized set of codes issued by the National Institute of Standards and Technology to ensure uniform identification of geographic entities throughout all federal government agencies. The entities covered under the FIPS include states and equivalent entities, counties, named populated and related location entities (such as places and county subdivisions) as well as American Indian and Alaska Native areas. More information about FIPS codes as well as the identifications of areas under FIPS can be found at <http://www.census.gov/geo/www/fips/fips.html>.

The GID code is not equivalent to the FIPS codes. The Census Bureau provides a crosswalk between the GID codes and FIPS codes through its integrated directory, which can be found at http://harvester.census.gov/gid/gid_07/options.html.

Methodology and Processing

Data Collection Methodology

Time Method: Cross-section

Data Collector: United States Department of Commerce. Bureau of the Census

Sampling Procedure:

In years between the complete census of local jails, BJS conducts the Annual Survey of Jails (ASJ). The ASJ is a sample survey of local jails used to estimate the number and characteristics of local inmates nationwide. For the 2012 ASJ, the U.S. Census Bureau, as the collection agent, drew a sample of 874 jail jurisdictions represented by 929 jail facilities (also referred to as reporting units). This sample represents over 2,800 jail jurisdictions nationwide. Local jail jurisdictions include counties (parishes in Louisiana) or municipal governments that administer one or more local jails. The 2012 ASJ sample included all jails with certainty (67) that were operated jointly by two or more jurisdictions, or multi-jurisdictional jails. Other jail jurisdictions included with certainty (268) were those that-

-held juvenile inmates at the time of the 2005 Census of Jail Inmates and had an average daily population of 500 or more inmates during the 12 months ending June 30, 2005.

-held only adult inmates and had an average daily population of 750 or more.

- Study 34884 -

Certainty jails jurisdiction in the survey received forms CJ-5D (Certainty Jurisdictions-Central data reporter) or CJ-5DA (Multi-Jurisdiction facilities and privately operated facilities in jurisdictions included with certainty in the Annual Survey of Jails).

The remaining jurisdictions were stratified into two groups: jurisdictions with jails holding at least one juvenile on June 30, 2005, and jails holding only adults on that date. Using stratified random sampling, 538 jurisdictions were selected from eight strata based on the two conditions enumerated above and four strata based on the average daily jail inmate population during 2005. The average daily jail inmate population was derived from the 2005 Census of Jail Inmates. These jail jurisdictions received forms CJ-5 (County/City operated) or CJ-5A (Private Facilities operating for County/City jail jurisdictions).

Mode of Data Collection: mailed questionnaires and web option

Type of Research Instrument: Structured

Actions to Minimize Losses:

Data were obtained by mailed questionnaires and web form reporting. The ASJ collection began in June of 2012, and ended in November of the same year.

BJS has consistently maintained high rates of response to the ASJ, typically 100% survey response rate and between 90%-100% item response rate. In an effort to minimize respondent burden and maximize response, the data collection plan allows for the jail respondents to submit data by mailing their reply in a postage-paid envelope or by fax, in addition to the internet-based reporting system (which BJS implemented and redesigned in 2011).

To maximize the accuracy of survey, at the direction of BJS, data collection staff conduct out-of-range analysis of critical items and use the results from this analysis to prioritize follow-up contacts. Follow-up telephone calls and faxes to non respondents are used to encourage high response rates. These methods have proved effective in reaching the nearly 100% response rate while minimizing missing data.

The response rate for the survey was nearly 100% for the following critical data items from responding jail jurisdictions: confined persons (CONFPOP), average daily population (ADP) and the total rated capacity (RATED). Extensive follow-up, including additional mail and fax requests and repeated telephone contacts, resulted in a nearly 100% response rate for the number of adult male and adult female inmates (ADULTM, ADULTF) and for the number of juvenile male and juvenile female inmates (JUVIM, JUVIF). The response rate was around 90% for data on conviction status (CONV, UNCONV), and around 95% for the number of inmates by race and Hispanic origin (WHITE, BLACK, HISP, AIAN, ASIAN, NHOP). The response rate for admissions to and releases from jail was around 97%.

In the modifications to the ASJ (forms CJ-5D and CJ-5DA), starting in 2010 and again in 2012, 335 jail jurisdictions (372 respondents) included with certainty (stratum 1 and 12) in the ASJ sample survey were asked to provide additional information on the flow of inmates going through jails and the distribution of time served, staff characteristics and assaults on staff resulting in death, and inmate misconduct. The item response rate varied again for 2012 based on 316 jail jurisdictions (351 respondents) reporting data:

95% for staff by occupation (CORRSTAFF, OTHERSTAFF);

66% for length of stay, based on releases from jail (series of questions starting with CONVII10A, UNCONVII10A);

99% for assaults on facility staff and staff deaths (ASSAULTSTAFFYN, ASSAULTCORR, ASSAULTOTRSTAFF, DEATHSTAFFYN, DEATHCORR, DEATHOTRSTAFF);

79% for inmate misconduct (PHYSASSAULT, DRUGVIO, ALCOVIO, WEAPON, STOLENPROP, ESCAPE, OTHERMAJVIO).

Notes

When calculating the total number of persons supervised but not confined, please use the created variable NCONPOP2. Excluded are inmates who participated in weekend programs that allow offenders to serve their sentences of confinement only on weekends (e.g., Friday-Sunday). This was created to reflect reporting changes in specific non-confined variables and will allow the user to reproduce figures found in BJS publications:

NCONPOP2=ELECMON+HOMDTN+COMMSVC+DAYRPTG+PRETSUP+WKPORG+DRUGPROG+OTRPROG

JUVENILES

- Study 34884 -

State statutes and judicial practices allow juveniles to be incarcerated in adult jails under a variety of circumstances. Because of the differing statutes and practices, however, accurate and comparable data on juveniles are difficult to collect.

Beginning in 1994 the ASJ provided estimates of the total number of jail inmates under age 18, the number held as adults, and the number held as juveniles. New sampling procedures were also introduced in 1994 to minimize the standard errors of these estimates. By stratifying jurisdictions based on the authority to house juveniles, the precision of the juvenile counts was improved. (See methodology section of Prisoner and Jail Inmates at Midyear 1998).

CHANGES TO THE ANNUAL SURVEY OF JAILS FORM

Beginning with the 2003 survey and continued in 2012, item 5 (item 8 in 2003) of the ASJ instrument regarding inmates held in jail for other authorities was revised to include more detail on the types of Federal authorities that had inmates housed in local jails. Previous versions of the questionnaire asked if the jail jurisdiction being surveyed held inmates for Federal authorities, to include (but not specify counts individually for) those held for the U.S. Marshal's Service, the Federal Bureau of Prisons, U.S. Immigration and Customs Enforcement, Bureau of Indian Affairs, or other-specify. The 2003 through 2012 surveys ask the jail facility to identify how many were held for each of these entities, individually, as opposed to condensing them into a single "Federal authorities" category. Beginning with the 2005 Census of Jail Inmates and in the 2006 Annual Survey of Jails and onward, the new item 'two or more races' was added to the race category.

BJS has actively engaged its stakeholder communities in an effort to assess their needs for data and information about local jails. Through a series of discussions and focus groups at professional conferences of jail administrators and in workgroup meetings with jail and county association members, BJS has discussed its portfolio of work on local jails to assess the extent to which it is meeting the needs of stakeholder communities and addressing key or emerging issues that currently are not met by its surveys. Jail administrators and other users of BJS jail data consistently identified several issues that are important for them to know about jails.

Starting in 2010, BJS enhanced the ASJ survey instruments to address these important topics. Included is data on the number of convicted inmates that are unsentenced or sentenced and the number of unconvicted inmates awaiting trial/arraignment, or transfers/holds for other authorities. In order to reduce respondent burden, ASJ no longer collects data on conviction status by sex.

Prior to 2010, BJS collected and reports data on rated capacity and it reports the percent of capacity occupied at midyear, where capacity is defined as "rated capacity." Rated capacity is the number of inmates (beds) that a facility could hold independently of programs as defined by a rating official. Other measures of capacity are useful, as rated capacity does not necessarily reflect the space available to provide treatment, services, or programs.

New to the ASJ collection, beginning in 2010, is the operational capacity that indicates the amount of space that jails have to run various programs, and this number can change by relatively large amounts from year-to-year as budgets change. Measuring crowding in relation to budgeted or operational capacity gives an indication of the programming available for inmates. Finally, design capacity-the number of beds available in the design of a facility-gives a measure of the underlying amount of space available for modification and redesign. Incorporating enhanced capacity measurements enables BJS to describe more accurately the variation and volatility of inmate bed space and crowding, especially as they relate to safety and security in jails.

To address more directly issues related to overcrowding and safety and security in jails, BJS started collecting data on staff and assaults against staff from the largest jails. In the modifications to the ASJ, starting in 2010, and again in 2012, jail jurisdictions (335) included with certainty (stratum 1 and 12) in the ASJ sample survey were asked to provide additional information on the flow of inmates going through jails and the distribution of time served, staff characteristics and assaults on staff resulting in death, and inmate misconduct.

Notes

AGGREGATING JAIL FACILITY AND RESPONDENT RECORDS INTO JAIL JURISDICTIONS:

In its statistics on jails, BJS reports data for jail jurisdictions. (See, for example table 9 in Jail Inmates at Midyear 2010-Statistical Tables, NCJ 233431, which reports data for the 50 largest jail jurisdictions in the nation.) A jail jurisdiction (typically a county) represents the entity that is responsible for managing the jail facilities under its authority. Jail jurisdictions may contain multiple facilities and/or multiple facility operators (i.e., both county and privately operated facilities). In the Annual Survey of Jails, BJS obtains data from jails responding or reporting units. For example, four reporting units in Allegheny County (PA) represent a single jail jurisdiction. BJS collapses the reporting units into the appropriate single jail jurisdiction.

- Study 34884 -

Jail reporting units are represented by a 21-digit number (FACID21). The first nine digits in FACID21 encompass the jurisdiction code which must match in order to collapse the individual file into a single jail jurisdiction file. The 9-digit jurisdiction ID variable (JURID) is included in the dataset. The privately operated facilities (indicated by "8" in the third position in FACID21) were recoded into the appropriate county or city jurisdiction.

Steps to aggregate the data into jail jurisdictions:

1. Sort file by JURID.

2. JURID should be utilized as the break variable in order to match the 9-digit ID. With the exception of the variable FINALWEIGHT, collapsing the data to produce a single jail jurisdiction record is performed by aggregating the absolute sum of the data variables in the file. The FINALWEIGHT variable should be aggregated based on the average (mean) calculation, because the weight for the multiple reporting units reflects the weight given at the jurisdiction level when the sample was drawn. Collapsing the data into the jurisdiction level can be conducted in statistical programs including for example, SPSS (such as the "aggregate" function) or SAS (such as PROC SUMMARY or PROC MEANS function), using the JURID variable as the classification variable.

Caution: Aggregating the flag items (0=Actual, 1=Estimate, 8=Not applicable and 9=Unknown) for the multiple reporting units into a single jurisdiction may result in numbers that differ from the original flag item. For example, if two reporting units each reported an unknown in the individual file, after aggregating the data, the jurisdiction level flag item will result in the number "18". Also, there are multiple variables in the dataset (i.e., city and facility name, other specifics) which are text and do not aggregate.

BJS METHOD OF CREATING THE JURISDICTION LEVEL FILE; HOW BJS MATCHED THE PRIVATELY OPERATED FACILITIES TO THE APPROPRIATE JAIL JURISDICTION:

The sample for the 2012 Annual Survey of Jails includes all publicly- and privately-operated jails in a sample of jail jurisdictions. BJS obtained data from 861 reporting units that represented 819 jurisdictions in the sample.

With the exception of two reporting units, the third position of the JURID for the single jurisdictions in which data were obtained from multiple respondents was changed to "1", indicating a county government (e.g., 058037037 should be changed to 051037037). For the Marion County Jail II, C.C.A. (158049008) and the Metro Davidson County Detention Facility- C.C.A. (438019003), the third position was changed to "2" which indicates a municipal (city) government.

Note: Two records were not collapsed into a single jail jurisdiction record. These specific jurisdictions have a city or county jail and a regional jail. The regional jail is a separate jurisdiction. To prevent these records from collapsing into a single jurisdiction, BJS changed the JURID prior to the aggregation step. The records are as follows:

South Fulton Regional Jail- 11106006006200000000 (Changed JURID to 112060060).

Fulton County- 111060060060000006600 (Did not change JURID).

Portsmouth City Jail- 47212500106100000000 (Changed JURID 471125001).

Hampton Roads Regional Jail- 47212500106200000000 (Did not change JURID).

Data Appraisal Information

Response Rate:

Response rate, nonresponse adjustment, and out-of scope jail facilities

The 2012 ASJ sampling frame comprised 929 reporting units. Ninety-four percent (or 861) of the 920 individual reporting units responded to the 2012 data collection, and 59 individual reporting units did not respond to the survey. The sampling frame initially comprised 929 units. However, nine units were out-of-scope for the 2012 data collection because they had closed, either permanently or temporarily, which resulted in the sampling frame of 920 active respondents.

To address more directly issues related to overcrowding and safety and security in jails, BJS started collecting data in 2010, and again in 2012, on staff and assaults against staff from the largest jails. In the modifications to the ASJ (forms CJ-5D and CJ-5DA), 335 jail jurisdictions (370 respondents) included with certainty in the ASJ sample survey were asked to provide additional information on the flow of inmates

- Study 34884 -

going through jails and the distribution of time served, staff characteristics and assaults on staff resulting in death, and inmate misconduct. Nearly all (328 or 98%) of the jail jurisdictions responded.

For the 2012 ASJ collection year BJS imputed the data for six of these 59 non-responding reporting units, as they belong to jurisdictions with at least one responding reporting unit (hence their jurisdiction is partial responder). For the remaining 53 reporting units (that did not respond) BJS implemented nonresponse weights adjustment procedures.

NOTES:

Because of the California Public Safety Realignment, between midyear 2011 and midyear 2012, California jails experienced a significant increase in the number of inmates (about 8,500 inmates) that was not experienced by jails nationwide. Consequently, California jails do not represent other jail jurisdictions nationwide. To ensure that the sampled (both with certainty and non-certainty) California jail jurisdictions represent California jurisdictions only, BJS computed new weights. Without computing new weights, the estimated nationwide jail population would be erroneously inflated.

Enhanced data items in Section IV - STAFF SAFETY AND SECURITY of forms CJ-5D or CJ-5DA are collected from certainty jail jurisdictions that are self-representing and should not be weighted. However, all other items in the survey for certainty jail jurisdictions are subject to weighting.

Nonresponse weight adjustment

The nonresponse weighting adjustment for the ASJ is handled in multiple steps. The first step is to set a respondent indicator and an active indicator for each reporting unit. The next step is to calculate the nonresponse weighting adjustment factor within sample stratum. The final step is to implement the final weight post-stratification as the result of California's jail jurisdictions and the Public Safety Realignment.

Respondent Indicators ([See methodology section in Jail Inmates at Midyear 2012 for details](#))

Estimates of Sampling Error:

Because ASJ estimates are based on a sample survey, they may differ from the results of conducting a complete census. Different samples could yield somewhat different results. There are two kinds of error associated with survey data: non-sampling and sampling error.

In any survey the full extent of the non-sampling error is never known. Non-sampling error can be attributed to many sources, such as improper reporting, differences in the interpretation of questions among respondents, non-response, and data-processing errors.

Sampling error is the variation that may occur by chance because a sample rather than a complete enumeration was conducted. Standard error is a measure of the variation among the estimates from all possible samples, stating the precision with which an estimate from a particular sample approximates the average of all possible samples. The appended standard error table represents the error surrounding the estimates of several key variables.

To generate standard errors, composite variables were created using a standard statistical software package (SPSS). The following created variables consist of:

SEX - Males: ADULTM + JUV M

SEX - Females: ADULTF + JUV F

Adults: ADULTM + ADULTF

Juveniles - Held as adults: ADLTJUV

Juveniles - Held as juveniles: JUV M + JUV F - ADLTJUV

Race - Other: AIAN+ASIAN+NHOPI

Conviction status - Convicted: CONV

Conviction status - Awaiting trial or other unconvicted: UNCONV

- Study 34884 -

After these variables were created the statistical software package SUDAAN was used to generate standard errors. Due to the complex design of the survey, SUDAAN calculated the standard errors while taking into account the stratification of jurisdictions. The data were first sorted to put all jurisdictions into their appropriate stratum. Next, a 'total count' SUDAAN statement was used with the variables Stratum_SUM and PSU_SUM to provide the population (sampling universe) counts and sample counts, respectively. (See program below). Finally the weighted variables were listed in a statement to generate standard errors:

```
proc descript data="g:err12" filetype=ascii means totals design=strwor ;
```

```
NEST Stratum ;
```

```
totcnt Stratum_SUM;
```

```
weight finalweight ;
```

```
var CONFPPOP TOTPOP WEEKN ADP RATED WHITE BLACK HISP ADULTM ADULTF TJUV JUVJUV ADULT TMALE TFEMALE  
CONVCTD UNCONV OTHERRACEE ;
```

SUDAAN provided sample estimates and estimated standard errors for selected items. (See appended table - Standard Error Estimates for the Annual Survey of Jails, 2012). To construct a 95% confidence interval for any of the estimates provided, multiply the standard error for an estimate by the z-score of 1.96 (for a 95% confidence interval). Then take the result and both add and subtract the result to the sample estimate to generate the confidence interval for that estimate. For example, by taking the estimate number of inmates held on the last week in June 2012, 744,524 +/- (1.96 x 7,874), a confidence interval of (729,091 to 759,957) can be constructed. This result shows the range of values the sample estimate would take 95 times out of 100 if different samples were drawn. Similar intervals may be constructed around other survey estimates.

Data Access

Dataset Availability

Location: Inter-university Consortium for Political and Social Research

Extent of Collection: 1 data file + machine-readable documentation (PDF) + SAS setup file(s) + SPSS setup file(s) + Stata setup file(s) + SAS transport + SPSS system + Stata system

Data Use Statement:

Citation Requirement: Publications based on ICPSR data collections should acknowledge those sources by means of bibliographic citations. To ensure that such source attributions are captured for social science bibliographic utilities, citations must appear in footnotes or in the reference section of publications.

Deposit Requirement: To provide funding agencies with essential information about use of archival resources and to facilitate the exchange of information about ICPSR participants' research activities, users of ICPSR data are requested to send to ICPSR bibliographic citations for each completed manuscript or thesis abstract. Visit the ICPSR Web site for more information on submitting citations.

Data Files Description

File-by-File Description

File Name: ASJ 2012 Data

File Dimensions:

- No. of Cases: 867
- No. of Variables: 200
- Record Length: 1,464

Type of File: ASCII data file

Data Format: Logical record length

Place of File Production: Ann Arbor, MI: Inter-university Consortium for Political and Social Research

Extent of Processing Checks: The data collection was processed according to the standard ICPSR processing procedures. The data were checked for illegal or inconsistent code values which, when found, were recoded to missing data values. No consistency checks were performed.

Notes

Variable WEIGHT and FINALWEIGHT is for reference only and it is not supposed to be used to calculate the national estimate. Users can use variable BJSW2 for that purpose. See "Nonresponse weight adjustment" for more information.

Only the certainty jail jurisdictions (stratum 1 and 12) in the ASJ sample survey (2010-current) were asked to provide additional information (forms CJ-5D or CJ-5DA) on the flow of inmates going through jails and the distribution of time served, staff characteristics and assaults on staff resulting in death, and inmate misconduct. A weight should not be applied to these items because the responses are self-represented.

ICPSR 34884

Annual Survey of Jails: Jail-Level Data, 2012

ASJ 2012 Data

Variable Description

Summary statistics (minimum, maximum, mean, median, and standard deviation) may not be available for every variable in the codebook. Conversely, a listing of frequencies in table format may not be present for every variable in the codebook either. However, all variables in the dataset are present and display sufficient information about each variable. These decisions are made intentionally and are at the discretion of the archive producing this codebook.

Annual Survey of Jails: Jail-Level Data, 2012

ASJ 2012 Data

Variable Groups

Variable Groups Containing Variables

<i>Variable Group Name</i>	<i>Variable Group Label</i>	<i>Page</i>
VG1	Identification items	14
VG2	Supervised population	14
VG3	Inmate counts and movements of the confined population	15
VG4	Population supervised in the community	18

VG1 - Identification items

<i>Variables within this Variable Group</i>		
<i>Variable</i>	<i>Variable Label</i>	<i>Page</i>
FACID21	AGENCY ID	20
JURDID	JURISDICTION ID	20
STATE	STATE	20
COUNTY	COUNTY NAME	21
FACNAME	FACILITY NAME	21
CITY	CITY	21
ZIPP	ZIP CODE	21
STRATUM	STRATUM	21
FINALWEIGHT	FINAL WEIGHT POST NON REPOSE WEIGHT ADJUSTMENT	22
WEIGHT	WEIGHT PRIOR TO NON REPOSE WEIGHT ADJUSTMENT	22

VG2 - Supervised population

<i>Variables within this Variable Group</i>		
<i>Variable</i>	<i>Variable Label</i>	<i>Page</i>
CONFPOP	CONFINED PERSONS	22
CONFPOPE	CONFINED PERSONS FLAG	22
NCONPOP	NONCONFINED PERSONS	22
NCONPOPE	NONCONFINED PERSONS FLAG	22
TOTPOP	TOTAL POPULATION	23
TOTPOPE	TOTAL POPULATION FLAG	23
NONCITZ	NON-U.S. CITIZENS	23
NONCITZF	NON-U.S. CITIZENS FLAG	23
WEEK	WEEKEND PROGRAM	23
WEEKN	NUMBER OF WEEKENDERS	24
WEEKF	WEEKENDERS FLAG	24
NCONPOP2	NONCONFINED POPULATION CALCULATED	66

- Study 34884 -

VG3 - Inmate counts and movements of the confined population

<i>Variables within this Variable Group</i>		
<i>Variable</i>	<i>Variable Label</i>	<i>Page</i>
ADULTM	ADULT MALES	24
ADULTMF	ADULT MALES FLAG	24
ADULTF	ADULT FEMALES	25
ADULTFF	ADULT FEMALES FLAG	25
JUV M	MALES UNDER AGE 18	25
JUV MF	MALES UNDER AGE 18	25
JUV F	FEMALES UNDER AGE 18	26
JUV FF	FEMALES UNDER AGE 18 FLAG	26
TOTGENDER	TOTAL INMATES BY SEX	26
TOTGENDERF	TOTAL INMATES BY SEX FLAG	26
ADLTJUV	ADULT JUVENILES	26
ADLTJUVE	ADULT JUVENILES FLAG	27
CONV	CONVICTION STATUS: TOTAL CONVICTED	27
CONVE	CONVICTION STATUS: TOTAL CONVICTED FLAG	27
CONVUNSENT	CONVICTION STATUS: CONVICTED: UNSENTENCED INMATES OR AWAITING SENTENCING	27
CONVUNSENTE	CONVICTION STATUS: CONVICTED: UNSENTENCED INMATES OR AWAITING SENTENCING FLAG	28
CONVSENT	CONVICTION STATUS: CONVICTED: SENTENCED INMATES	28
CONVSENTE	CONVICTION STATUS: CONVICTED: SENTENCED INMATES FLAG	28
UNCONV	CONVICTION STATUS: TOTAL UNCONVICTED	28
UNCONVE	CONVICTION STATUS: TOTAL UNCONVICTED FLAG	28
UNCONVTRIAL	CONVICTION STATUS: UNCONVICTED: AWAITING TRIAL/ARRAIGNMENT	29
UNCONVTRIALF	CONVICTION STATUS: UNCONVICTED: AWAITING TRIAL/ARRAIGNMENT FLAG	29
UNCONVHOLD	CONVICTION STATUS: UNCONVICTED: AWAITING TRANSFER/HOLD FOR OTHER AUTHORITIES	29
UNCONVHOLDF	CONVICTION STATUS: UNCONVICTED: AWAITING TRANSFER/HOLD FOR OTHER AUTHORITIES FLAG	29
UNCONVOTHER	CONVICTION STATUS: UNCONVICTED: OTHER	30
UNCONVOTHERF	CONVICTION STATUS: UNCONVICTED: OTHER FLAG	30
S2QII3C	TOTAL CONVICTION STATUS	30
S2QII3CF	TOTAL CONVICTION STATUS FLAG	30
WHITE	WHITE	30
WHITEF	WHITE FLAG	31
BLACK	BLACK OR AFRICAN AMERICAN	31
BLACKF	BLACK OR AFRICAN AMERICAN FLAG	31
HISP	HISPANIC OR LATINO	31
HISPF	HISPANIC OR LATINO FLAG	31
AIAN	AMERICAN INDIAN/ALASKA NATIVE	32

- Study 34884 -

Variables within this Variable Group

<i>Variable</i>	<i>Variable Label</i>	<i>Page</i>
AIANF	AMERICAN INDIAN/ALASKA NATIVE FLAG	32
ASIAN	ASIAN	32
ASIANF	ASIAN FLAG	32
NHOP	NATIVE HAWAIIAN/OTHER PACIFIC ISLANDER	32
NHOPF	NATIVE HAWAIIAN/OTHER PACIFIC ISLANDER FLAG	33
TWRACE	TWO OR MORE RACES	33
TWRACEF	TWO OR MORE RACES FLAG	33
OTERRACESPEC	ADDITIONAL RACE CATEGORIES IN YOUR INFORMATION SYSTEM SPECIFY - ALPHA	33
OTERRACE	ADDITIONAL RACE CATEGORIES IN YOUR INFORMATION SYSTEM SPECIFY	33
OTERRACEF	ADDITIONAL RACE CATEGORIES IN YOUR INFORMATION SYSTEM SPECIFY FLAG	34
RACEDK	RACE NOT KNOWN	34
RACEDKF	RACE NOT KNOWN FLAG	34
RACETOTAL	TOTAL INMATE RACE	34
RACETOTALF	TOTAL INMATE RACE FLAG	34
MARSHALS	U.S. MARSHAL'S SERVICE	35
MARSHALSF	U.S. MARSHAL'S SERVICE FLAG	35
BOP	FEDERAL BUREAU OF PRISONS	35
BOPF	FEDERAL BUREAU OF PRISONS FLAG	35
ICE	U.S. IMMIGRATION AND CUSTOMS ENFORCEMENT	35
ICEF	U.S. IMMIGRATION AND CUSTOMS ENFORCEMENT FLAG	35
BIA	BUREAU OF INDIAN AFFAIRS	36
BIAF	BUREAU OF INDIAN AFFAIRS FLAG	36
S2QII5A5SPEC	OTHER FEDERAL AUTHORITIES - SPECIFY	36
S2QII5A5	OTHER FEDERAL AUTHORITIES	36
S2QII5A5F	OTHER FEDERAL AUTHORITIES FLAG	36
INSTATEPRIS	STATE: FOR YOUR STATE	37
INSTATEPRISF	STATE: FOR YOUR STATE FLAG	37
OUTSTATEPRIS	STATE: FOR OTHER STATES	37
OUTSTATEPRISF	STATE: FOR OTHER STATES FLAG	37
INSTATEJAIL	LOCAL: WITHIN YOUR STATE	37
INSTATEJAILF	LOCAL: WITHIN YOUR STATE FLAG	38
OUTSTATEJAIL	LOCAL: OUTSIDE YOUR STATE	38
OUTSTATEJAILF	LOCAL: OUTSIDE YOUR STATE FLAG	38
S2QII5D	TOTAL OTHER AUTHORITIES	38
S2QII5DF	TOTAL OTHER AUTHORITIES FLAG	38
PEAKDATE	WHAT DAY - GREATEST NUMBER OF INMATES	39
PEAKPOP	30-DAY (MOST HELD)	39
PEAKPOPF	30-DAY FLAG	39

- Study 34884 -

Variables within this Variable Group

<i>Variable</i>	<i>Variable Label</i>	<i>Page</i>
ADP	AVERAGE DAILY POPULATION	39
ADPF	AVERAGE DAILY POPULATION FLAG	39
RATED	RATED CAPACITY	40
RATEDF	RATED CAPACITY FLAG	40
OPERATION	OPERATIONAL CAPACITY	40
OPERATIONF	OPERATIONAL CAPACITY FLAG	40
DESIGN	DESIGN CAPACITY	41
DESIGNF	DESIGN CAPACITY FLAG	41
ADMIS	NEW ADMISSIONS	41
ADMISF	NEW ADMISSIONS FLAG	41
RELEASE	FINAL DISCHARGES	42
RELEASEF	FINAL DISCHARGES FLAG	42
CONVII10A	DISCHARGED: TIME SERVED LESS THAN 1 DAY - CONVICTED	42
CONVII10AF	DISCHARGED: TIME SERVED LESS THAN 1 DAY - CONVICTED FLAG	43
UNCONVII10A	DISCHARGED: TIME SERVED LESS THAN 1 DAY - UNCONVICTED	43
UNCONVII10AF	DISCHARGED: TIME SERVED LESS THAN 1 DAY - UNCONVICTED FLAG	43
CONVII10B	DISCHARGED: TIME SERVED 1 TO 2 DAYS - CONVICTED	43
CONVII10BF	DISCHARGED: TIME SERVED 1 TO 2 DAYS - CONVICTED FLAG	44
UNCONVII10B	DISCHARGED: TIME SERVED 1 TO 2 DAYS - UNCONVICTED	44
UNCONVII10BF	DISCHARGED: TIME SERVED 1 TO 2 DAYS - UNCONVICTED FLAG	44
CONVII10C	DISCHARGED: TIME SERVED 3 TO 7 DAYS - CONVICTED	45
CONVII10CF	DISCHARGED: TIME SERVED 3 TO 7 DAYS - CONVICTED FLAG	45
UNCONVII10C	DISCHARGED: TIME SERVED 3 TO 7 DAYS - UNCONVICTED	45
UNCONVII10CF	DISCHARGED: TIME SERVED 3 TO 7 DAYS - UNCONVICTED FLAG	46
CONVII10D	DISCHARGED: TIME SERVED 8 TO 30 DAYS - CONVICTED	46
CONVII10DF	DISCHARGED: TIME SERVED 8 TO 30 DAYS - CONVICTED FLAG	46
UNCONVII10D	DISCHARGED: TIME SERVED 8 TO 30 DAYS - UNCONVICTED	47
UNCONVII10DF	DISCHARGED: TIME SERVED 8 TO 30 DAYS - UNCONVICTED FLAG	47
CONVII10E	DISCHARGED: TIME SERVED 31 TO 180 DAYS - CONVICTED	47
CONVII10EF	DISCHARGED: TIME SERVED 31 TO 180 DAYS - CONVICTED FLAG	47
UNCONVII10E	DISCHARGED: TIME SERVED 31 TO 180 DAYS - UNCONVICTED	48
UNCONVII10EF	DISCHARGED: TIME SERVED 31 TO 180 DAYS - UNCONVICTED FLAG	48
CONVII10F	DISCHARGED: TIME SERVED MORE THAN 180 DAYS - CONVICTED	48
CONVII10F	DISCHARGED: TIME SERVED MORE THAN 180 DAYS - CONVICTED FLAG	49
UNCONVII10F	DISCHARGED: TIME SERVED MORE THAN 180 DAYS - UNCONVICTED	49
UNCONVII10FF	DISCHARGED: TIME SERVED MORE THAN 180 DAYS - UNCONVICTED FLAG	49
S2II10GCONV	DISCHARGED: TIME SERVED TOTAL - CONVICTED	50

- Study 34884 -

<i>Variables within this Variable Group</i>		
<i>Variable</i>	<i>Variable Label</i>	<i>Page</i>
S2II10GCONVE	DISCHARGED: TIME SERVED TOTAL - CONVICTED FLAG	50
S2II10GFUNCONV	DISCHARGED: TIME SERVED TOTAL - UNCONVICTED	50
S2II10GFUNCONVE	DISCHARGED: TIME SERVED TOTAL - UNCONVICTED FLAG	51

VG4 - Population supervised in the community

<i>Variables within this Variable Group</i>		
<i>Variable</i>	<i>Variable Label</i>	<i>Page</i>
EMONITOR	NUMBER OF PEOPLE PARTICIPATED IN ELECTRONIC MONITORING PROGRAM	51
EMONITORE	ELECTRONIC MONITORING FLAG	51
HOMEDET	NUMBER OF PEOPLE PARTICIPATED IN HOME DETENTION	51
HOMEDETNE	HOME DETENTION FLAG	51
COMMSRV	NUMBER OF PEOPLE PARTICIPATED IN COMMUNITY SERVICE	52
COMMSRVE	COMMUNITY SERVICE FLAG	52
DAYREPORT	NUMBER OF PEOPLE PARTICIPATED IN DAY REPORTING	52
DAYREPORTNE	DAY REPORTING FLAG	52
PRETRIAL	NUMBER OF PEOPLE PARTICIPATED IN OTHER PRETRIAL SUPERVISION	52
PRETRIALE	OTHER PRETRIAL SUPERVISION FLAG	53
ALTWORK	NUMBER OF PEOPLE PARTICIPATED IN OTHER ALTERNATIVE WORK PROGRAMS	53
ALTWORKE	OTHER ALTERNATIVE WORK PROGRAMS FLAG	53
TREATMENT	NUMBER OF PEOPLE PARTICIPATED IN ALCOHOL/DRUG TREATMENT PROGRAMS	53
TREATMENTNE	ALCOHOL/DRUG TREATMENT PROGRAMS FLAG	53
OTRNONCONFS	NUMBER OF PEOPLE PARTICIPATED IN OTHER NONCONFINED PROGRAMS - SPECIFY	54
OTRNONCONF	NUMBER OF PEOPLE PARTICIPATED IN OTHER NONCONFINED PROGRAMS	54
OTRNONCONFNE	OTHER NONCONFINED PROGRAMS FLAG	54
NONCONFD	TOTAL NONCONFINED PERSONS	54
NONCONFDE	TOTAL NONCONFINED PERSONS FLAG	54
ADMLNCNE	ADULT MALE NONCONFINED	55
ADMLNCNFE	ADULT MALE NONCONFINED FLAG	55
ADFMNCNE	ADULT FEMALE NONCONFINED	55
ADFMNCNFE	ADULT FEMALE NONCONFINED FLAG	55
JVMLNCNE	NONCONFINED MALES UNDER AGE 18	55
JVMLNCNFE	NONCONFINED MALES UNDER AGE 18 FLAG	56
JVFMNCNE	NONCONFINED FEMALES UNDER AGE 18	56
JVFMNCNFE	NONCONFINED FEMALES UNDER AGE 18 FLAG	56
NCNFGNDR	TOTAL NONCONFINED SEX	56
NCNFGNDRE	TOTAL NONCONFINED SEX FLAG	56

- Study 34884 -

<i>Variables within this Variable Group</i>		
<i>Variable</i>	<i>Variable Label</i>	<i>Page</i>
CONVNCNF	CONVICTED NONCONFINED	57
CONVNCNFF	CONVICTED NONCONFINED FLAG	57
UNCNVNCF	UNCONVICTED NONCONFINED	57
UNCNVNCFF	UNCONVICTED NONCONFINED FLAG	57
TOTCNVST	TOTAL NONCONFINED CONVICTION STATUS	57
TOTCNVSTF	TOTAL NONCONFINED CONVICTION STATUS FLAG	57
CORRSTAFF	S4QIV.1A: NUMBER OF STAFF : CORRECTIONAL OFFICERS	58
CORRSTAFFF	NUMBER OF STAFF : CORRECTIONAL OFFICERS FLAG	58
OTHERSTAFF	S4QIV.1B: NUMBER OF STAFF : ALL OTHER STAFF	58
OTHERSTAFFF	NUMBER OF STAFF : ALL OTHER STAFF FLAG	59
S4QIV1C	S4QIV.1C: NUMBER OF STAFF : TOTAL STAFF	59
S4QIV1CF	NUMBER OF STAFF : TOTAL STAFF FLAG	59
ASSAULTSTAFFYN	S4QIV.2: INMATE-INFLICTED PHYSICAL OR SEXUAL ASSAULTS ON FACILITY STAFF	59
ASSAULTCORR	S4QIV.2.1A: ASSAULTS ON CORRECTIONAL OFFICERS	60
ASSAULTCORRE	ASSAULTS ON CORRECTIONAL OFFICERS FLAG	60
ASSAULTOTRSTAFF	S4QIV.2.1B: ASSAULTS ON ALL OTHER STAFF	60
ASSAULTOTRSTAFFF	ASSAULTS ON ALL OTHER STAFF FLAG	60
DEATHSTAFFYN	S4QIV.3: STAFF DEATHS AS A RESULT OF ASSAULTS BY INMATES?	61
DEATHCORR	S4QIV.3.1A: CORRECTIONAL OFFICER DEATHS INFLICTED BY INMATES	61
DEATHCORRE	CORRECTIONAL OFFICER DEATHS INFLICTED BY INMATES FLAG	61
DEATHOTRSTAFF	S4QIV.3.1B: ALL OTHER STAFF DEATHS INFLICTED BY INMATES	62
DEATHOTRSTAFFF	ALL OTHER STAFF DEATHS INFLICTED BY INMATES FLAG	62
PHYSASSAULT	S4QIV.4.1A: PHYSICAL ASSAULT ON ANOTHER INMATE	62
PHYSASSAULTF	PHYSICAL ASSAULT ON ANOTHER INMATE FLAG	62
DRUGVIO	S4QIV.4.1B: DRUG VIOLATION, SUCH AS USE, POSSESSION, OR DEALING DRUGS	63
DRUGVIOF	DRUG VIOLATION, SUCH AS USE, POSSESSION, OR DEALING DRUGS FLAG	63
ALCOVIO	S4QIV.4.1C: ALCOHOL VIOLATION, INCLUDING UNAUTHORIZED POSSESSION, USE, OR SALE	63
ALCOVIOF	ALCOHOL VIOLATION, INCLUDING UNAUTHORIZED POSSESSION, USE, OR SALE FLAG	64
WEAPON	S4QIV.4.1D: POSSESSION OF A WEAPON	64
WEAPONF	POSSESSION OF A WEAPON FLAG	64
STOLENPROP	S4QIV.4.1E: POSSESSION OF STOLEN PROPERTY	64
STOLENPROPF	POSSESSION OF STOLEN PROPERTY FLAG	65
ESCAPE	S4QIV.4.1F: ESCAPE OR ATTEMPTED ESCAPE	65
ESCAPEF	ESCAPE OR ATTEMPTED ESCAPE FLAG	65
OTHERMAJVIO	S4QIV.4.1G: ANY OTHER MAJOR VIOLATION, INCLUDING WORK SLOWDOWNS, FOOD STRIKES, SETTING FIRE, RIOTING, ETC.	66

- Study 34884 -

Variables within this Variable Group		
Variable	Variable Label	Page
OTHERMAJVIOF	ANY OTHER MAJOR VIOLATION, INCLUDING WORK SLOWDOWNS, FOOD STRIKES, SETTING FIRE, RIOTING, ETC. FLAG	66

FACID21 - AGENCY ID

Location: 1-63 (width: 63; decimal: 0)

Variable Type: character

JURDID - JURISDICTION ID

Location: 64-90 (width: 27; decimal: 0)

Variable Type: character

STATE - STATE

Location: 91-92 (width: 2; decimal: 0)

Variable Type: numeric

Value	Label
1	AL
3	AZ
4	AR
5	CA
6	CO
7	CT
8	DE
9	DC
10	FL
11	GA
13	ID
14	IL
15	IN
16	IA
17	KS
18	KY
19	LA
20	ME
21	MD
22	MA
23	MI
24	MN
25	MS
26	MO
27	MT

- Study 34884 -

<i>Value</i>	<i>Label</i>
28	NE
29	NV
30	NH
31	NJ
32	NM
33	NY
34	NC
35	ND
36	OH
37	OK
38	OR
39	PA
41	SC
42	SD
43	TN
44	TX
45	UT
47	VA
48	WA
49	WV
50	WI
51	WY

COUNTY - COUNTY NAME

Location: 93-227 (width: 135; decimal: 0)

Variable Type: character

FACNAME - FACILITY NAME

Location: 228-362 (width: 135; decimal: 0)

Variable Type: character

CITY - CITY

Location: 363-458 (width: 96; decimal: 0)

Variable Type: character

ZIP - ZIP CODE

Location: 459-473 (width: 15; decimal: 0)

Variable Type: character

STRATUM - STRATUM

Location: 474-475 (width: 2; decimal: 0)

Variable Type: numeric

FINALWEIGHT - FINAL WEIGHT POST NON RESPONSE WEIGHT ADJUSTMENT

Location: 476-483 (width: 8; decimal: 4)

Variable Type: numeric

WEIGHT - WEIGHT PRIOR TO NON RESPONSE WEIGHT ADJUSTMENT

Location: 484-490 (width: 7; decimal: 4)

Variable Type: numeric

CONFPOP - CONFINED PERSONS

Location: 491-496 (width: 6; decimal: 0)

Variable Type: numeric

Question:

- I.1. On June 29, 2012, how many persons under the supervision of your jail jurisdiction were -
- a. CONFINED in your jail facilities?

CONFPOPF - CONFINED PERSONS FLAG

Location: 497-497 (width: 1; decimal: 0)

Variable Type: numeric

<i>Value</i>	<i>Label</i>
0	Actual
1	Estimated
8	Not applicable
9	Don't know

NCONPOP - NONCONFINED PERSONS

Location: 498-503 (width: 6; decimal: 0)

Variable Type: numeric

Question:

- I.1. On June 29, 2012, how many persons under the supervision of your jail jurisdiction were -
- b. Under jail supervision but NOT CONFINED?

NCONPOPF - NONCONFINED PERSONS FLAG

Location: 504-504 (width: 1; decimal: 0)

Variable Type: numeric

<i>Value</i>	<i>Label</i>
0	Actual

- Study 34884 -

<i>Value</i>	<i>Label</i>
1	Estimated
8	Not applicable
9	Don't know

TOTPOP - TOTAL POPULATION

Location: 505-510 (width: 6; decimal: 0)

Variable Type: numeric

Question:

I.1. On June 29, 2012, how many persons under the supervision of your jail jurisdiction were -

c. Total (Sum of items I.1a and I.1b)

TOTPOPF - TOTAL POPULATION FLAG

Location: 511-511 (width: 1; decimal: 0)

Variable Type: numeric

<i>Value</i>	<i>Label</i>
0	Actual
1	Estimated
8	Not applicable
9	Don't know

NONCITZ - NON-U.S. CITIZENS

Location: 512-517 (width: 6; decimal: 0)

Variable Type: numeric

Question:

I.2. Of all persons under your jail supervision reported in item I.1c, how many were not U.S. citizens?

NONCITZF - NON-U.S. CITIZENS FLAG

Location: 518-519 (width: 2; decimal: 0)

Variable Type: numeric

Range of Missing Values (M): -9

<i>Value</i>	<i>Label</i>
0	Actual
1	Estimated
8	Not applicable
9	Don't know
-9 (M)	Blank

WEEK - WEEKEND PROGRAM

- Study 34884 -

Location: 520-521 (width: 2; decimal: 0)

Variable Type: numeric

Range of Missing Values (M): -9

Question:

I.3. On the weekend prior to June 29, 2012, did your jail jurisdiction have a weekend program?

Value	Label
1	Yes
2	No
-9 (M)	Blank

WEEKN - NUMBER OF WEEKENDERS

Location: 522-527 (width: 6; decimal: 0)

Variable Type: numeric

Question:

I.3. On the weekend prior to June 29, 2012, did your jail jurisdiction have a weekend program? How Many inmates participated?

WEEKF - WEEKENDERS FLAG

Location: 528-528 (width: 1; decimal: 0)

Variable Type: numeric

Value	Label
0	Actual
1	Estimated
8	Not applicable
9	Don't know

ADULTM - ADULT MALES

Location: 529-534 (width: 6; decimal: 0)

Variable Type: numeric

Question:

II.1. On June 29, 2012, how many persons CONFINED in your jail facilities were -

a. Adult males (age 18 or older)

ADULTMF - ADULT MALES FLAG

Location: 535-535 (width: 1; decimal: 0)

Variable Type: numeric

Value	Label
0	Actual

- Study 34884 -

<i>Value</i>	<i>Label</i>
1	Estimated
8	Not applicable
9	Don't know

ADULTF - ADULT FEMALES

Location: 536-541 (width: 6; decimal: 0)

Variable Type: numeric

Question:

II.1. On June 29, 2012, how many persons CONFINED in your jail facilities were -

b. Adult females (age 18 or older)

ADULTFF - ADULT FEMALES FLAG

Location: 542-542 (width: 1; decimal: 0)

Variable Type: numeric

<i>Value</i>	<i>Label</i>
0	Actual
1	Estimated
8	Not applicable
9	Don't know

JUVM - MALES UNDER AGE 18

Location: 543-548 (width: 6; decimal: 0)

Variable Type: numeric

Question:

II.1. On June 29, 2012, how many persons CONFINED in your jail facilities were -

c. Males under age 18

JUVMF - MALES UNDER AGE 18

Location: 549-549 (width: 1; decimal: 0)

Variable Type: numeric

<i>Value</i>	<i>Label</i>
0	Actual
1	Estimated
8	Not applicable
9	Don't know

JUVF - FEMALES UNDER AGE 18

Location: 550-555 (width: 6; decimal: 0)

Variable Type: numeric

Question:

II.1. On June 29, 2012, how many persons CONFINED in your jail facilities were -

d. Females under age 18

JUVFF - FEMALES UNDER AGE 18 FLAG

Location: 556-556 (width: 1; decimal: 0)

Variable Type: numeric

Value	Label
0	Actual
1	Estimated
8	Not applicable
9	Don't know

TOTGENDER - TOTAL INMATES BY SEX

Location: 557-562 (width: 6; decimal: 0)

Variable Type: numeric

Question:

II.1. On June 29, 2012, how many persons CONFINED in your jail facilities were -

e. TOTAL (Sum of items II.1a to II.1d should equal item I.1a)

TOTGENDERF - TOTAL INMATES BY SEX FLAG

Location: 563-563 (width: 1; decimal: 0)

Variable Type: numeric

Value	Label
0	Actual
1	Estimated
8	Not applicable
9	Don't know

ADLTJUV - ADULT JUVENILES

Location: 564-569 (width: 6; decimal: 0)

Variable Type: numeric

Question:

II.2. Of all persons under the age of 18 CONFINED in your jail facilities on June 29, 2012 (items II.1c and II.1d), how many were tried, or awaiting trial, in adult court?

Number of persons under age 18 held as adults

ADLTJUVF - ADULT JUVENILES FLAG

Location: 570-570 (width: 1; decimal: 0)

Variable Type: numeric

<i>Value</i>	<i>Label</i>
0	Actual
1	Estimated
8	Not applicable
9	Don't know

CONV - CONVICTION STATUS: TOTAL CONVICTED

Location: 571-576 (width: 6; decimal: 0)

Variable Type: numeric

Question:

II.3. Of all persons CONFINED in your jail facilities on June 29, 2012, how many were -

a. Convicted

CONVF - CONVICTION STATUS: TOTAL CONVICTED FLAG

Location: 577-577 (width: 1; decimal: 0)

Variable Type: numeric

<i>Value</i>	<i>Label</i>
0	Actual
1	Estimated
8	Not applicable
9	Don't know

CONVUNSENT - CONVICTION STATUS: CONVICTED: UNSENTENCED INMATES OR AWAITING SENTENCING

Location: 578-583 (width: 6; decimal: 0)

Variable Type: numeric

Question:

II.3. Of all persons CONFINED in your jail facilities on June 29, 2012, how many were -

a. Convicted - 1. Unsented inmates or awaiting sentencing

CONVUNSENTF - CONVICTION STATUS: CONVICTED: UNSENTENCED INMATES OR AWAITING SENTENCING FLAG

Location: 584-584 (width: 1; decimal: 0)

Variable Type: numeric

<i>Value</i>	<i>Label</i>
0	Actual
1	Estimated
8	Not applicable
9	Don't know

CONVSENT - CONVICTION STATUS: CONVICTED: SENTENCED INMATES

Location: 585-590 (width: 6; decimal: 0)

Variable Type: numeric

Question:

II.3. Of all persons CONFINED in your jail facilities on June 29, 2012, how many were -

a. Convicted - 2. Sentenced inmates

CONVSENTF - CONVICTION STATUS: CONVICTED: SENTENCED INMATES FLAG

Location: 591-591 (width: 1; decimal: 0)

Variable Type: numeric

<i>Value</i>	<i>Label</i>
0	Actual
1	Estimated
8	Not applicable
9	Don't know

UNCONV - CONVICTION STATUS: TOTAL UNCONVICTED

Location: 592-597 (width: 6; decimal: 0)

Variable Type: numeric

Question:

II.3. Of all persons CONFINED in your jail facilities on June 29, 2012, how many were -

b. Unconvicted

UNCONVF - CONVICTION STATUS: TOTAL UNCONVICTED FLAG

Location: 598-598 (width: 1; decimal: 0)

- Study 34884 -

Variable Type: numeric

Value	Label
0	Actual
1	Estimated
8	Not applicable
9	Don't know

UNCONVTrial - CONVICTION STATUS: UNCONVICTED: AWAITING TRIAL/ARRAIGNMENT

Location: 599-604 (width: 6; decimal: 0)

Variable Type: numeric

Question:

II.3. Of all persons CONFINED in your jail facilities on June 29, 2012, how many were -

b. Unconvicted - 1. Awaiting trial/arraignment

UNCONVTrialF - CONVICTION STATUS: UNCONVICTED: AWAITING TRIAL/ARRAIGNMENT FLAG

Location: 605-605 (width: 1; decimal: 0)

Variable Type: numeric

Value	Label
0	Actual
1	Estimated
8	Not applicable
9	Don't know

UNCONVHold - CONVICTION STATUS: UNCONVICTED: AWAITING TRANSFER/HOLD FOR OTHER AUTHORITIES

Location: 606-611 (width: 6; decimal: 0)

Variable Type: numeric

Question:

II.3. Of all persons CONFINED in your jail facilities on June 29, 2012, how many were -

b. Unconvicted - 2. Awaiting transfer/hold for other authorities

UNCONVHoldF - CONVICTION STATUS: UNCONVICTED: AWAITING TRANSFER/HOLD FOR OTHER AUTHORITIES FLAG

Location: 612-612 (width: 1; decimal: 0)

Variable Type: numeric

Value	Label
0	Actual
1	Estimated

- Study 34884 -

<i>Value</i>	<i>Label</i>
8	Not applicable
9	Don't know

UNCONVOTHER - CONVICTION STATUS: UNCONVICTED: OTHER

Location: 613-618 (width: 6; decimal: 0)

Variable Type: numeric

Question:

II.3. Of all persons CONFINED in your jail facilities on June 29, 2012, how many were -

b. Unconvicted - 3. Other

UNCONVOTHERF - CONVICTION STATUS: UNCONVICTED: OTHER FLAG

Location: 619-619 (width: 1; decimal: 0)

Variable Type: numeric

<i>Value</i>	<i>Label</i>
0	Actual
1	Estimated
8	Not applicable
9	Don't know

S2QII3C - TOTAL CONVICTION STATUS

Location: 620-625 (width: 6; decimal: 0)

Variable Type: numeric

Question:

II.3. Of all persons CONFINED in your jail facilities on June 29, 2012, how many were -

c. TOTAL (Sum of items II.3a and II.3b should equal item I.1a)

S2QII3CF - TOTAL CONVICTION STATUS FLAG

Location: 626-626 (width: 1; decimal: 0)

Variable Type: numeric

<i>Value</i>	<i>Label</i>
0	Actual
1	Estimated
8	Not applicable
9	Don't know

WHITE - WHITE

- Study 34884 -

Location: 627-632 (width: 6; decimal: 0)

Variable Type: numeric

Question:

II.4. On June 29, 2012, how many persons CONFINED in your jail facilities were - a. White, not of Hispanic origin

WHITEF - WHITE FLAG

Location: 633-633 (width: 1; decimal: 0)

Variable Type: numeric

Value	Label
0	Actual
1	Estimated
8	Not applicable
9	Don't know

BLACK - BLACK OR AFRICAN AMERICAN

Location: 634-639 (width: 6; decimal: 0)

Variable Type: numeric

Question:

II.4. On June 29, 2012, how many persons CONFINED in your jail facilities were - b. Black or African American, not of Hispanic origin

BLACKF - BLACK OR AFRICAN AMERICAN FLAG

Location: 640-640 (width: 1; decimal: 0)

Variable Type: numeric

Value	Label
0	Actual
1	Estimated
8	Not applicable
9	Don't know

HISP - HISPANIC OR LATINO

Location: 641-646 (width: 6; decimal: 0)

Variable Type: numeric

Question:

II.4. On June 29, 2012, how many persons CONFINED in your jail facilities were - c. Hispanic or Latino

HISPF - HISPANIC OR LATINO FLAG

Location: 647-647 (width: 1; decimal: 0)

Variable Type: numeric

<i>Value</i>	<i>Label</i>
0	Actual
1	Estimated
8	Not applicable
9	Don't know

AIAN - AMERICAN INDIAN/ALASKA NATIVE

Location: 648-653 (width: 6; decimal: 0)

Variable Type: numeric

Question:

II.4. On June 29, 2012, how many persons CONFINED in your jail facilities were - d. American Indian/Alaska Native, not of Hispanic origin

AIANF - AMERICAN INDIAN/ALASKA NATIVE FLAG

Location: 654-654 (width: 1; decimal: 0)

Variable Type: numeric

<i>Value</i>	<i>Label</i>
0	Actual
1	Estimated
8	Not applicable
9	Don't know

ASIAN - ASIAN

Location: 655-660 (width: 6; decimal: 0)

Variable Type: numeric

Question:

II.4. On June 29, 2012, how many persons CONFINED in your jail facilities were - e. Asian, not of Hispanic origin

ASIANF - ASIAN FLAG

Location: 661-661 (width: 1; decimal: 0)

Variable Type: numeric

<i>Value</i>	<i>Label</i>
0	Actual
1	Estimated
8	Not applicable
9	Don't know

NHOPI - NATIVE HAWAIIAN/OTHER PACIFIC ISLANDER

Location: 662-667 (width: 6; decimal: 0)

Variable Type: numeric

Question:

II.4. On June 29, 2012, how many persons CONFINED in your jail facilities were - f. Native Hawaiian or Other Pacific Islander, not of Hispanic origin

NHOPIF - NATIVE HAWAIIAN/OTHER PACIFIC ISLANDER FLAG

Location: 668-668 (width: 1; decimal: 0)

Variable Type: numeric

<i>Value</i>	<i>Label</i>
0	Actual
1	Estimated
8	Not applicable
9	Don't know

TWORACE - TWO OR MORE RACES

Location: 669-674 (width: 6; decimal: 0)

Variable Type: numeric

Question:

II.4. On June 29, 2012, how many persons CONFINED in your jail facilities were - g. Two or more races, not of Hispanic origin

TWORACEF - TWO OR MORE RACES FLAG

Location: 675-675 (width: 1; decimal: 0)

Variable Type: numeric

<i>Value</i>	<i>Label</i>
0	Actual
1	Estimated
8	Not applicable
9	Don't know

OTHERRACESPEC - ADDITIONAL RACE CATEGORIES IN YOUR INFORMATION SYSTEM SPECIFY - ALPHA

Location: 676-775 (width: 100; decimal: 0)

Variable Type: character

Question:

II.4. On June 29, 2012, how many persons CONFINED in your jail facilities were - h. Additional categories in your information system - Specify

OTHERRACE - ADDITIONAL RACE CATEGORIES IN YOUR INFORMATION SYSTEM SPECIFY

Location: 776-781 (width: 6; decimal: 0)

Variable Type: numeric

Question:

II.4. On June 29, 2012, how many persons CONFINED in your jail facilities were - h. Additional categories in your information system

OTHERRACEF - ADDITIONAL RACE CATEGORIES IN YOUR INFORMATION SYSTEM SPECIFY FLAG

Location: 782-782 (width: 1; decimal: 0)

Variable Type: numeric

Value	Label
0	Actual
1	Estimated
8	Not applicable
9	Don't know

RACEDK - RACE NOT KNOWN

Location: 783-788 (width: 6; decimal: 0)

Variable Type: numeric

Question:

II.4. On June 29, 2012, how many persons CONFINED in your jail facilities were - i. Race not known

RACEDKF - RACE NOT KNOWN FLAG

Location: 789-789 (width: 1; decimal: 0)

Variable Type: numeric

Value	Label
0	Actual
1	Estimated
8	Not applicable
9	Don't know

RACETOTAL - TOTAL INMATE RACE

Location: 790-795 (width: 6; decimal: 0)

Variable Type: numeric

Question:

II.4. On June 29, 2012, how many persons CONFINED in your jail facilities were - j. TOTAL (Sum of items II.4a to II.4i should equal item I.1a)

RACETOTALF - TOTAL INMATE RACE FLAG

Location: 796-796 (width: 1; decimal: 0)

Variable Type: numeric

Value	Label
0	Actual
1	Estimated
8	Not applicable
9	Don't know

MARSHALS - U.S. MARSHAL'S SERVICE

Location: 797-802 (width: 6; decimal: 0)

Variable Type: numeric

Question:

II.5. On June 29, 2012, how many persons CONFINED in your jail facilities were held for - a. Federal authorities - 1. U.S. Marshals Service

MARSHALS - U.S. MARSHAL'S SERVICE FLAG

Location: 803-803 (width: 1; decimal: 0)

Variable Type: numeric

Value	Label
0	Actual
1	Estimated
8	Not applicable
9	Don't know

BOP - FEDERAL BUREAU OF PRISONS

Location: 804-809 (width: 6; decimal: 0)

Variable Type: numeric

Question:

II.5. On June 29, 2012, how many persons CONFINED in your jail facilities were held for - a. Federal authorities - 2. Federal Bureau of Prisons

BOP - FEDERAL BUREAU OF PRISONS FLAG

Location: 810-810 (width: 1; decimal: 0)

Variable Type: numeric

Value	Label
0	Actual
1	Estimated
8	Not applicable
9	Don't know

ICE - U.S. IMMIGRATION AND CUSTOMS ENFORCEMENT

Location: 811-816 (width: 6; decimal: 0)

Variable Type: numeric

Question:

II.5. On June 29, 2012, how many persons CONFINED in your jail facilities were held for - a. Federal authorities - 3. U.S. Immigration and Customs Enforcement (I.C.E.)

ICE - U.S. IMMIGRATION AND CUSTOMS ENFORCEMENT FLAG

- Study 34884 -

Location: 817-817 (width: 1; decimal: 0)

Variable Type: numeric

Value	Label
0	Actual
1	Estimated
8	Not applicable
9	Don't know

BIA - BUREAU OF INDIAN AFFAIRS

Location: 818-823 (width: 6; decimal: 0)

Variable Type: numeric

Question:

II.5. On June 29, 2012, how many persons CONFINED in your jail facilities were held for - a. Federal authorities - 4. Bureau of Indian Affairs

BIAF - BUREAU OF INDIAN AFFAIRS FLAG

Location: 824-824 (width: 1; decimal: 0)

Variable Type: numeric

Value	Label
0	Actual
1	Estimated
8	Not applicable
9	Don't know

S2QII5A5SPEC - OTHER FEDERAL AUTHORITIES - SPECIFY

Location: 825-924 (width: 100; decimal: 0)

Variable Type: character

Question:

II.5. On June 29, 2012, how many persons CONFINED in your jail facilities were held for - a. Federal authorities - 5. Other - Specify

S2QII5A5 - OTHER FEDERAL AUTHORITIES

Location: 925-930 (width: 6; decimal: 0)

Variable Type: numeric

Question:

II.5. On June 29, 2012, how many persons CONFINED in your jail facilities were held for - a. Federal authorities - 5. Other

S2QII5A5F - OTHER FEDERAL AUTHORITIES FLAG

Location: 931-931 (width: 1; decimal: 0)

Variable Type: numeric

- Study 34884 -

<i>Value</i>	<i>Label</i>
0	Actual
1	Estimated
8	Not applicable
9	Don't know

INSTATEPRIS - STATE: FOR YOUR STATE

Location: 932-937 (width: 6; decimal: 0)

Variable Type: numeric

Question:

II.5. On June 29, 2012, how many persons CONFINED in your jail facilities were held for - b. State prison authorities - 1. For your state

INSTATEPRISF - STATE: FOR YOUR STATE FLAG

Location: 938-938 (width: 1; decimal: 0)

Variable Type: numeric

<i>Value</i>	<i>Label</i>
0	Actual
1	Estimated
8	Not applicable
9	Don't know

OUTSTATEPRIS - STATE: FOR OTHER STATES

Location: 939-944 (width: 6; decimal: 0)

Variable Type: numeric

Question:

II.5. On June 29, 2012, how many persons CONFINED in your jail facilities were held for - b. State prison authorities - 2. For other states

OUTSTATEPRISF - STATE: FOR OTHER STATES FLAG

Location: 945-945 (width: 1; decimal: 0)

Variable Type: numeric

<i>Value</i>	<i>Label</i>
0	Actual
1	Estimated
8	Not applicable
9	Don't know

INSTATEJAIL - LOCAL: WITHIN YOUR STATE

Location: 946-951 (width: 6; decimal: 0)

Variable Type: numeric

Question:

- Study 34884 -

II.5. On June 29, 2012, how many persons CONFINED in your jail facilities were held for - c. Other local jail jurisdictions - EXCLUDE inmates being housed for your own jurisdiction (i.e., your own county/city inmates) - 1. Within your state

INSTATEJAILF - LOCAL: WITHIN YOUR STATE FLAG

Location: 952-952 (width: 1; decimal: 0)

Variable Type: numeric

Value	Label
0	Actual
1	Estimated
8	Not applicable
9	Don't know

OUTSTATEJAIL - LOCAL: OUTSIDE YOUR STATE

Location: 953-958 (width: 6; decimal: 0)

Variable Type: numeric

Question:

II.5. On June 29, 2012, how many persons CONFINED in your jail facilities were held for - c. Other local jail jurisdictions - 2. Outside your state

OUTSTATEJAILF - LOCAL: OUTSIDE YOUR STATE FLAG

Location: 959-959 (width: 1; decimal: 0)

Variable Type: numeric

Value	Label
0	Actual
1	Estimated
8	Not applicable
9	Don't know

S2QII5D - TOTAL OTHER AUTHORITIES

Location: 960-965 (width: 6; decimal: 0)

Variable Type: numeric

Question:

II.5 d. TOTAL (Sum of items II.5a to II.5c)

S2QII5DF - TOTAL OTHER AUTHORITIES FLAG

Location: 966-966 (width: 1; decimal: 0)

Variable Type: numeric

Value	Label
0	Actual
1	Estimated

- Study 34884 -

<i>Value</i>	<i>Label</i>
8	Not applicable
9	Don't know

PEAKDATE - WHAT DAY - GREATEST NUMBER OF INMATES

Location: 967-968 (width: 2; decimal: 0)

Variable Type: numeric

Question:

II.6. During the 30-DAY period from June 1 to June 30, 2012, on what day did your facility hold the greatest number of inmates? Peak population should be equal to or greater than the confined inmate population reported in item I.1a

PEAKPOP - 30-DAY (MOST HELD)

Location: 969-974 (width: 6; decimal: 0)

Variable Type: numeric

Question:

II.6 b. How many persons were CONFINED on that day?

PEAKPOPF - 30-DAY FLAG

Location: 975-975 (width: 1; decimal: 0)

Variable Type: numeric

<i>Value</i>	<i>Label</i>
0	Actual
1	Estimated
8	Not applicable
9	Don't know

ADP - AVERAGE DAILY POPULATION

Location: 976-981 (width: 6; decimal: 0)

Variable Type: numeric

Question:

II.7. Between July 1, 2011, and June 30, 2012, what was the average daily population of all jail confinement facilities operated by your jurisdiction? - Include inmates who participated in weekend programs that allow offenders to serve their sentences of confinement only on weekends (e.g., Friday-Sunday). - To calculate the average daily population, add the number of persons for each day during the period July 1, 2011, through June 30, 2012, and divide the result by 366.

ADPF - AVERAGE DAILY POPULATION FLAG

Location: 982-982 (width: 1; decimal: 0)

Variable Type: numeric

<i>Value</i>	<i>Label</i>
0	Actual
1	Estimated

- Study 34884 -

<i>Value</i>	<i>Label</i>
5	BJS estimated data
8	Not applicable
9	Don't know

RATED - RATED CAPACITY

Location: 983-988 (width: 6; decimal: 0)

Variable Type: numeric

Question:

II.8. On June 29, 2012, what was the total jail capacity of your jail facilities?

a. Rated capacity (The maximum number of beds or inmates assigned by a rating official to a facility, excluding separate temporary holding areas.)

RATEDF - RATED CAPACITY FLAG

Location: 989-989 (width: 1; decimal: 0)

Variable Type: numeric

<i>Value</i>	<i>Label</i>
0	Actual
1	Estimated
5	BJS estimated data
8	Not applicable
9	Don't know

OPERATION - OPERATIONAL CAPACITY

Location: 990-995 (width: 6; decimal: 0)

Variable Type: numeric

Question:

II.8. On June 29, 2012, what was the total jail capacity of your jail facilities?

b. Operational capacity (The number of inmates that can be accommodated based on staff, existing programs and services in institutions within your jurisdiction. Also known as "budget" capacity.)

OPERATIONF - OPERATIONAL CAPACITY FLAG

Location: 996-996 (width: 1; decimal: 0)

Variable Type: numeric

<i>Value</i>	<i>Label</i>
0	Actual

- Study 34884 -

<i>Value</i>	<i>Label</i>
1	Estimated
8	Not applicable
9	Don't know

DESIGN - DESIGN CAPACITY

Location: 997-1002 (width: 6; decimal: 0)

Variable Type: numeric

Question:

II.8. On June 29, 2012, what was the total jail capacity of your jail facilities?

c. Design capacity (The number of inmates planners or architects intended for all jail facilities in your jurisdiction.)

DESIGNF - DESIGN CAPACITY FLAG

Location: 1003-1003 (width: 1; decimal: 0)

Variable Type: numeric

<i>Value</i>	<i>Label</i>
0	Actual
1	Estimated
8	Not applicable
9	Don't know

ADMIS - NEW ADMISSIONS

Location: 1004-1009 (width: 6; decimal: 0)

Variable Type: numeric

Question:

II.9. During the WEEK of June 24 to June 30, 2012, how many persons were -

a. New admissions in your jail facilities? - INCLUDE persons officially booked into and housed in your facility by formal legal document and by the authority of the courts or some other official agency. - INCLUDE those persons serving a weekend sentence coming into the facility for the first time. EXCLUDE returns from escape, work release, medical appointments/treatment facilities, bail and court appearances.

ADMISF - NEW ADMISSIONS FLAG

Location: 1010-1010 (width: 1; decimal: 0)

Variable Type: numeric

- Study 34884 -

Value	Label
0	Actual
1	Estimated
8	Not applicable
9	Don't know

RELEASE - FINAL DISCHARGES

Location: 1011-1016 (width: 6; decimal: 0)

Variable Type: numeric

Question:

II.9. During the WEEK of June 24 to June 30, 2012, how many persons were -

b. Final discharges from your jail facilities? INCLUDE all persons released after a period of confinement (e.g., sentence completion, bail/bond releases, other pre-trial releases, transfers to other jurisdictions and deaths). - INCLUDE those persons completing their weekend sentence leaving the facility for the last time. - EXCLUDE temporary discharges (e.g., work releases, medical appointments/treatment, to courts, furloughs, day reporters and transfers to other facilities within your jurisdiction.)

RELEASEF - FINAL DISCHARGES FLAG

Location: 1017-1017 (width: 1; decimal: 0)

Variable Type: numeric

Value	Label
0	Actual
1	Estimated
8	Not applicable
9	Don't know

CONVII10A - DISCHARGED: TIME SERVED LESS THAN 1 DAY - CONVICTED

Location: 1018-1023 (width: 6; decimal: 0)

Variable Type: numeric

Range of Missing Values (M): -9

Question:

II.10. During the WEEK of June 24 to June 30, 2012, how many persons discharged from your jurisdiction were confined -- Report time served, not sentence length, for discharged person.

Convicted - a. Less than 1 day

Value	Label
-9 (M)	Blank

CONVII10AF - DISCHARGED: TIME SERVED LESS THAN 1 DAY - CONVICTED FLAG

Location: 1024-1025 (width: 2; decimal: 0)

Variable Type: numeric

Range of Missing Values (M): -9

Value	Label
0	Actual
1	Estimated
8	Not applicable
9	Don't know
-9 (M)	Blank

UNCONVII10A - DISCHARGED: TIME SERVED LESS THAN 1 DAY - UNCONVICTED

Location: 1026-1031 (width: 6; decimal: 0)

Variable Type: numeric

Range of Missing Values (M): -9

Question:

II.10. During the WEEK of June 24 to June 30, 2012, how many persons discharged from your jurisdiction were confined -- Report time served, not sentence length, for discharged person.

Unconvicted - a. Less than 1 day

Value	Label
-9 (M)	Blank

UNCONVII10AF - DISCHARGED: TIME SERVED LESS THAN 1 DAY - UNCONVICTED FLAG

Location: 1032-1033 (width: 2; decimal: 0)

Variable Type: numeric

Range of Missing Values (M): -9

Value	Label
0	Actual
1	Estimated
8	Not applicable
9	Don't know
-9 (M)	Blank

CONVII10B - DISCHARGED: TIME SERVED 1 TO 2 DAYS - CONVICTED

Location: 1034-1039 (width: 6; decimal: 0)

Variable Type: numeric

Range of Missing Values (M): -9

Question:

II.10. During the WEEK of June 24 to June 30, 2012, how many persons discharged from your jurisdiction were confined -- Report time served, not sentence length, for discharged person.

Convicted - b. 1 to 2 days

<i>Value</i>	<i>Label</i>
-9 (M)	Blank

CONVII10BF - DISCHARGED: TIME SERVED 1 TO 2 DAYS - CONVICTED FLAG

Location: 1040-1041 (width: 2; decimal: 0)

Variable Type: numeric

Range of Missing Values (M): -9

<i>Value</i>	<i>Label</i>
0	Actual
1	Estimated
8	Not applicable
9	Don't know
-9 (M)	Blank

UNCONVII10B - DISCHARGED: TIME SERVED 1 TO 2 DAYS - UNCONVICTED

Location: 1042-1047 (width: 6; decimal: 0)

Variable Type: numeric

Range of Missing Values (M): -9

Question:

II.10. During the WEEK of June 24 to June 30, 2012, how many persons discharged from your jurisdiction were confined -- Report time served, not sentence length, for discharged person.

Unconvicted - b. 1 to 2 days

<i>Value</i>	<i>Label</i>
-9 (M)	Blank

UNCONVII10BF - DISCHARGED: TIME SERVED 1 TO 2 DAYS - UNCONVICTED FLAG

Location: 1048-1049 (width: 2; decimal: 0)

Variable Type: numeric

Range of Missing Values (M): -9

<i>Value</i>	<i>Label</i>
0	Actual

- Study 34884 -

<i>Value</i>	<i>Label</i>
1	Estimated
8	Not applicable
9	Don't know
-9 (M)	Blank

CONVII10C - DISCHARGED: TIME SERVED 3 TO 7 DAYS - CONVICTED

Location: 1050-1055 (width: 6; decimal: 0)

Variable Type: numeric

Range of Missing Values (M): -9

Question:

II.10. During the WEEK of June 24 to June 30, 2012, how many persons discharged from your jurisdiction were confined -- Report time served, not sentence length, for discharged person.

Convicted - c. 3 to 7 days

<i>Value</i>	<i>Label</i>
-9 (M)	Blank

CONVII10CF - DISCHARGED: TIME SERVED 3 TO 7 DAYS - CONVICTED FLAG

Location: 1056-1057 (width: 2; decimal: 0)

Variable Type: numeric

Range of Missing Values (M): -9

<i>Value</i>	<i>Label</i>
0	Actual
1	Estimated
8	Not applicable
9	Don't know
-9 (M)	Blank

UNCONVII10C - DISCHARGED: TIME SERVED 3 TO 7 DAYS - UNCONVICTED

Location: 1058-1063 (width: 6; decimal: 0)

Variable Type: numeric

Range of Missing Values (M): -9

Question:

II.10. During the WEEK of June 24 to June 30, 2012, how many persons discharged from your jurisdiction were confined -- Report time served, not sentence length, for discharged person.

- Study 34884 -

Unconvicted - c. 3 to 7 days

<i>Value</i>	<i>Label</i>
-9 (M)	Blank

UNCONVII10CF - DISCHARGED: TIME SERVED 3 TO 7 DAYS - UNCONVICTED FLAG

Location: 1064-1065 (width: 2; decimal: 0)

Variable Type: numeric

Range of Missing Values (M): -9

<i>Value</i>	<i>Label</i>
0	Actual
1	Estimated
8	Not applicable
9	Don't know
-9 (M)	Blank

CONVII10D - DISCHARGED: TIME SERVED 8 TO 30 DAYS - CONVICTED

Location: 1066-1071 (width: 6; decimal: 0)

Variable Type: numeric

Range of Missing Values (M): -9

Question:

II.10. During the WEEK of June 24 to June 30, 2012, how many persons discharged from your jurisdiction were confined -- Report time served, not sentence length, for discharged person.

Convicted - d. 8 to 30 days

<i>Value</i>	<i>Label</i>
-9 (M)	Blank

CONVII10DF - DISCHARGED: TIME SERVED 8 TO 30 DAYS - CONVICTED FLAG

Location: 1072-1073 (width: 2; decimal: 0)

Variable Type: numeric

Range of Missing Values (M): -9

<i>Value</i>	<i>Label</i>
0	Actual
1	Estimated
8	Not applicable
9	Don't know
-9 (M)	Blank

UNCONVII10D - DISCHARGED: TIME SERVED 8 TO 30 DAYS - UNCONVICTED

Location: 1074-1079 (width: 6; decimal: 0)

Variable Type: numeric

Range of Missing Values (M): -9

Question:

II.10. During the WEEK of June 24 to June 30, 2012, how many persons discharged from your jurisdiction were confined -- Report time served, not sentence length, for discharged person.

Unconvicted - d. 8 to 30 days

<i>Value</i>	<i>Label</i>
-9 (M)	Blank

UNCONVII10DF - DISCHARGED: TIME SERVED 8 TO 30 DAYS - UNCONVICTED FLAG

Location: 1080-1081 (width: 2; decimal: 0)

Variable Type: numeric

Range of Missing Values (M): -9

<i>Value</i>	<i>Label</i>
0	Actual
1	Estimated
8	Not applicable
9	Don't know
-9 (M)	Blank

CONVII10E - DISCHARGED: TIME SERVED 31 TO 180 DAYS - CONVICTED

Location: 1082-1087 (width: 6; decimal: 0)

Variable Type: numeric

Range of Missing Values (M): -9

Question:

II.10. During the WEEK of June 24 to June 30, 2012, how many persons discharged from your jurisdiction were confined -- Report time served, not sentence length, for discharged person.

Convicted - e. 31 to 180 days

<i>Value</i>	<i>Label</i>
-9 (M)	Blank

CONVII10EF - DISCHARGED: TIME SERVED 31 TO 180 DAYS - CONVICTED FLAG

Location: 1088-1089 (width: 2; decimal: 0)

- Study 34884 -

Variable Type: numeric

Range of Missing Values (M): -9

Value	Label
0	Actual
1	Estimated
8	Not applicable
9	Don't know
-9 (M)	Blank

UNCONVII10E - DISCHARGED: TIME SERVED 31 TO 180 DAYS - UNCONVICTED

Location: 1090-1095 (width: 6; decimal: 0)

Variable Type: numeric

Range of Missing Values (M): -9

Question:

II.10. During the WEEK of June 24 to June 30, 2012, how many persons discharged from your jurisdiction were confined -- Report time served, not sentence length, for discharged person.

Unconvicted - e. 31 to 180 days

Value	Label
-9 (M)	Blank

UNCONVII10EF - DISCHARGED: TIME SERVED 31 TO 180 DAYS - UNCONVICTED FLAG

Location: 1096-1097 (width: 2; decimal: 0)

Variable Type: numeric

Range of Missing Values (M): -9

Value	Label
0	Actual
1	Estimated
8	Not applicable
9	Don't know
-9 (M)	Blank

CONVII10F - DISCHARGED: TIME SERVED MORE THAN 180 DAYS - CONVICTED

Location: 1098-1103 (width: 6; decimal: 0)

Variable Type: numeric

Range of Missing Values (M): -9

Question:

II.10. During the WEEK of June 24 to June 30, 2012, how many persons discharged from your jurisdiction were confined -- Report time served, not sentence length, for discharged person.

Convicted - f. More than 180 days

<i>Value</i>	<i>Label</i>
-9 (M)	Blank

CONVFII10F - DISCHARGED: TIME SERVED MORE THAN 180 DAYS - CONVICTED FLAG

Location: 1104-1105 (width: 2; decimal: 0)

Variable Type: numeric

Range of Missing Values (M): -9

<i>Value</i>	<i>Label</i>
0	Actual
1	Estimated
8	Not applicable
9	Don't know
-9 (M)	Blank

UNCONVII10F - DISCHARGED: TIME SERVED MORE THAN 180 DAYS - UNCONVICTED

Location: 1106-1111 (width: 6; decimal: 0)

Variable Type: numeric

Range of Missing Values (M): -9

Question:

II.10. During the WEEK of June 24 to June 30, 2012, how many persons discharged from your jurisdiction were confined -- Report time served, not sentence length, for discharged person.

Unconvicted - f. More than 180 days

<i>Value</i>	<i>Label</i>
-9 (M)	Blank

UNCONVII10FF - DISCHARGED: TIME SERVED MORE THAN 180 DAYS - UNCONVICTED FLAG

Location: 1112-1113 (width: 2; decimal: 0)

Variable Type: numeric

Range of Missing Values (M): -9

<i>Value</i>	<i>Label</i>
0	Actual
1	Estimated

- Study 34884 -

Value	Label
8	Not applicable
9	Don't know
-9 (M)	Blank

S2II10GCONV - DISCHARGED: TIME SERVED TOTAL - CONVICTED

Location: 1114-1119 (width: 6; decimal: 0)

Variable Type: numeric

Range of Missing Values (M): -9

Question:

II.10. During the WEEK of June 24 to June 30, 2012, how many persons discharged from your jurisdiction were confined -- Report time served, not sentence length, for discharged person.

Convicted - g. TOTAL (Sum of items II.10a to II.10f should equal item II.9b)

Value	Label
-9 (M)	Blank

S2II10GCONVF - DISCHARGED: TIME SERVED TOTAL - CONVICTED FLAG

Location: 1120-1121 (width: 2; decimal: 0)

Variable Type: numeric

Range of Missing Values (M): -9

Value	Label
0	Actual
1	Estimated
8	Not applicable
9	Don't know
-9 (M)	Blank

S2II10GFUNCONV - DISCHARGED: TIME SERVED TOTAL - UNCONVICTED

Location: 1122-1127 (width: 6; decimal: 0)

Variable Type: numeric

Range of Missing Values (M): -9

Question:

II.10. During the WEEK of June 24 to June 30, 2012, how many persons discharged from your jurisdiction were confined -- Report time served, not sentence length, for discharged person.

Unconvicted - g. TOTAL (Sum of items II.10a to II.10f should equal item II.9b)

- Study 34884 -

Value	Label
-9 (M)	Blank

S2II10GFUNCONVF - DISCHARGED: TIME SERVED TOTAL - UNCONVICTED FLAG

Location: 1128-1129 (width: 2; decimal: 0)

Variable Type: numeric

Range of Missing Values (M): -9

Value	Label
0	Actual
1	Estimated
8	Not applicable
9	Don't know
-9 (M)	Blank

EMONITOR - NUMBER OF PEOPLE PARTICIPATED IN ELECTRONIC MONITORING PROGRAM

Location: 1130-1135 (width: 6; decimal: 0)

Variable Type: numeric

Question:

Section III -- POPULATION SUPERVISED IN THE COMMUNITY - If item Ib equals 0 (zero) STOP HERE. III.1. On June 29, 2012, how many persons under your jail supervision who were NOT CONFINED participated in - EXCLUDE inmates on weekend programs - a. Electronic monitoring

EMONITORF - ELECTRONIC MONITORING FLAG

Location: 1136-1136 (width: 1; decimal: 0)

Variable Type: numeric

Value	Label
0	Actual
1	Estimated
8	Not applicable
9	Don't know

HOMEDETN - NUMBER OF PEOPLE PARTICIPATED IN HOME DETENTION

Location: 1137-1142 (width: 6; decimal: 0)

Variable Type: numeric

Question:

III.1. On June 29, 2012, how many persons under your jail supervision who were NOT CONFINED participated in - EXCLUDE inmates on weekend programs - b. Home detention without electronic monitoring

HOMEDETNF - HOME DETENTION FLAG

Location: 1143-1143 (width: 1; decimal: 0)

Variable Type: numeric

- Study 34884 -

<i>Value</i>	<i>Label</i>
0	Actual
1	Estimated
8	Not applicable
9	Don't know

COMMSRV - NUMBER OF PEOPLE PARTICIPATED IN COMMUNITY SERVICE

Location: 1144-1149 (width: 6; decimal: 0)

Variable Type: numeric

Question:

III.1. On June 29, 2012, how many persons under your jail supervision who were NOT CONFINED participated in - EXCLUDE inmates on weekend programs - c. Community service

COMMSRVF - COMMUNITY SERVICE FLAG

Location: 1150-1150 (width: 1; decimal: 0)

Variable Type: numeric

<i>Value</i>	<i>Label</i>
0	Actual
1	Estimated
8	Not applicable
9	Don't know

DAYREPORT - NUMBER OF PEOPLE PARTICIPATED IN DAY REPORTING

Location: 1151-1156 (width: 6; decimal: 0)

Variable Type: numeric

Question:

III.1. On June 29, 2012, how many persons under your jail supervision who were NOT CONFINED participated in - EXCLUDE inmates on weekend programs - d. Day reporting

DAYREPORTF - DAY REPORTING FLAG

Location: 1157-1157 (width: 1; decimal: 0)

Variable Type: numeric

<i>Value</i>	<i>Label</i>
0	Actual
1	Estimated
8	Not applicable
9	Don't know

PRETRIAL - NUMBER OF PEOPLE PARTICIPATED IN OTHER PRETRIAL SUPERVISION

Location: 1158-1163 (width: 6; decimal: 0)

Variable Type: numeric

Question:

III.1. On June 29, 2012, how many persons under your jail supervision who were NOT CONFINED participated in - EXCLUDE inmates on weekend programs - e. Other pretrial supervision

PRETRIALF - OTHER PRETRIAL SUPERVISION FLAG

Location: 1164-1164 (width: 1; decimal: 0)

Variable Type: numeric

<i>Value</i>	<i>Label</i>
0	Actual
1	Estimated
8	Not applicable
9	Don't know

ALTWORK - NUMBER OF PEOPLE PARTICIPATED IN OTHER ALTERNATIVE WORK PROGRAMS

Location: 1165-1170 (width: 6; decimal: 0)

Variable Type: numeric

Question:

III.1. On June 29, 2012, how many persons under your jail supervision who were NOT CONFINED participated in - EXCLUDE inmates on weekend programs - f. Other alternative work programs - EXCLUDE inmates participating in work release programs who return to the jail at night.

ALTWORKF - OTHER ALTERNATIVE WORK PROGRAMS FLAG

Location: 1171-1171 (width: 1; decimal: 0)

Variable Type: numeric

<i>Value</i>	<i>Label</i>
0	Actual
1	Estimated
8	Not applicable
9	Don't know

TREATMENT - NUMBER OF PEOPLE PARTICIPATED IN ALCOHOL/DRUG TREATMENT PROGRAMS

Location: 1172-1177 (width: 6; decimal: 0)

Variable Type: numeric

Question:

III.1. On June 29, 2012, how many persons under your jail supervision who were NOT CONFINED participated in - EXCLUDE inmates on weekend programs - g. Alcohol/ drug treatment programs - EXCLUDE inmates participating in alcohol/drug treatment programs who are confined in the jail.

TREATMENTF - ALCOHOL/DRUG TREATMENT PROGRAMS FLAG

Location: 1178-1178 (width: 1; decimal: 0)

Variable Type: numeric

- Study 34884 -

<i>Value</i>	<i>Label</i>
0	Actual
1	Estimated
8	Not applicable
9	Don't know

OTRNONCONFS - NUMBER OF PEOPLE PARTICIPATED IN OTHER NONCONFINED PROGRAMS - SPECIFY

Location: 1179-1278 (width: 100; decimal: 0)

Variable Type: character

Question:

III.1. On June 29, 2012, how many persons under your jail supervision who were NOT CONFINED participated in - EXCLUDE inmates on weekend programs - h. Other programs outside of jail facilities - Specify

OTRNONCONF - NUMBER OF PEOPLE PARTICIPATED IN OTHER NONCONFINED PROGRAMS

Location: 1279-1284 (width: 6; decimal: 0)

Variable Type: numeric

Question:

III.1. On June 29, 2012, how many persons under your jail supervision who were NOT CONFINED participated in - EXCLUDE inmates on weekend programs - h. Other programs outside of jail facilities

OTRNONCONFF - OTHER NONCONFINED PROGRAMS FLAG

Location: 1285-1285 (width: 1; decimal: 0)

Variable Type: numeric

<i>Value</i>	<i>Label</i>
0	Actual
1	Estimated
8	Not applicable
9	Don't know

NONCONFD - TOTAL NONCONFINED PERSONS

Location: 1286-1291 (width: 6; decimal: 0)

Variable Type: numeric

Question:

III.1. On June 29, 2012, how many persons under your jail supervision who were NOT CONFINED participated in - EXCLUDE inmates on weekend programs - i. TOTAL (Sum of items III.1a to III.1h should equal item I.1b.)

NONCONFDF - TOTAL NONCONFINED PERSONS FLAG

Location: 1292-1292 (width: 1; decimal: 0)

Variable Type: numeric

- Study 34884 -

<i>Value</i>	<i>Label</i>
0	Actual
1	Estimated
8	Not applicable
9	Don't know

ADMLNCNF - ADULT MALE NONCONFINED

Location: 1293-1298 (width: 6; decimal: 0)

Variable Type: numeric

Question:

III.2. On June 29, 2012, how many persons under your jail supervision who were NOT CONFINED were -- a. Adult males (age 18 or older)

ADMLNCNF - ADULT MALE NONCONFINED FLAG

Location: 1299-1299 (width: 1; decimal: 0)

Variable Type: numeric

<i>Value</i>	<i>Label</i>
0	Actual
1	Estimated
8	Not applicable
9	Don't know

ADFMNCNF - ADULT FEMALE NONCONFINED

Location: 1300-1305 (width: 6; decimal: 0)

Variable Type: numeric

Question:

III.2. On June 29, 2012, how many persons under your jail supervision who were NOT CONFINED were -- b. Adult females (age 18 or older)

ADFMNCNF - ADULT FEMALE NONCONFINED FLAG

Location: 1306-1306 (width: 1; decimal: 0)

Variable Type: numeric

<i>Value</i>	<i>Label</i>
0	Actual
1	Estimated
8	Not applicable
9	Don't know

JVMLNCNF - NONCONFINED MALES UNDER AGE 18

Location: 1307-1312 (width: 6; decimal: 0)

Variable Type: numeric

Question:

III.2. On June 29, 2012, how many persons under your jail supervision who were NOT CONFINED were -- c. Males under 18

JVMLNCNFF - NONCONFINED MALES UNDER AGE 18 FLAG

Location: 1313-1313 (width: 1; decimal: 0)

Variable Type: numeric

<i>Value</i>	<i>Label</i>
0	Actual
1	Estimated
8	Not applicable
9	Don't know

JVFMNCNF - NONCONFINED FEMALES UNDER AGE 18

Location: 1314-1319 (width: 6; decimal: 0)

Variable Type: numeric

Question:

III.2. On June 29, 2012, how many persons under your jail supervision who were NOT CONFINED were -- d. Females under 18

JVFMNCNFF - NONCONFINED FEMALES UNDER AGE 18 FLAG

Location: 1320-1320 (width: 1; decimal: 0)

Variable Type: numeric

<i>Value</i>	<i>Label</i>
0	Actual
1	Estimated
8	Not applicable
9	Don't know

NCNFGNDR - TOTAL NONCONFINED SEX

Location: 1321-1326 (width: 6; decimal: 0)

Variable Type: numeric

Question:

III.2.e.TOTAL (Sum of items III.2a. to III.2d. should equal item I.1b.

NCNFGNDRF - TOTAL NONCONFINED SEX FLAG

Location: 1327-1327 (width: 1; decimal: 0)

Variable Type: numeric

<i>Value</i>	<i>Label</i>
0	Actual
1	Estimated
8	Not applicable

- Study 34884 -

<i>Value</i>	<i>Label</i>
9	Don't know

CONVNCNF - CONVICTED NONCONFINED

Location: 1328-1333 (width: 6; decimal: 0)

Variable Type: numeric

Question:

III.3. Of all persons under your jail supervision who were NOT CONFINED on June 29, 2012, how many were -- a. convicted

CONVNCNFF - CONVICTED NONCONFINED FLAG

Location: 1334-1334 (width: 1; decimal: 0)

Variable Type: numeric

<i>Value</i>	<i>Label</i>
0	Actual
1	Estimated
8	Not applicable
9	Don't know

UNCNVNCF - UNCONVICTED NONCONFINED

Location: 1335-1340 (width: 6; decimal: 0)

Variable Type: numeric

Question:

III.3. Of all persons under your jail supervision who were NOT CONFINED on June 29, 2012, how many were -- b. Unconvicted

UNCNVNCF - UNCONVICTED NONCONFINED FLAG

Location: 1341-1341 (width: 1; decimal: 0)

Variable Type: numeric

<i>Value</i>	<i>Label</i>
0	Actual
1	Estimated
8	Not applicable
9	Don't know

TOTCNVST - TOTAL NONCONFINED CONVICTION STATUS

Location: 1342-1347 (width: 6; decimal: 0)

Variable Type: numeric

Question:

III.3. Of all persons under your jail supervision who were NOT CONFINED on June 29, 2012, how many were -- c. TOTAL (Sum of items III.3a and III.3b should equal item I.1b)

TOTCNVSTF - TOTAL NONCONFINED CONVICTION STATUS FLAG

- Study 34884 -

Location: 1348-1348 (width: 1; decimal: 0)

Variable Type: numeric

Value	Label
0	Actual
1	Estimated
8	Not applicable
9	Don't know

CORRSTAFF - S4QIV.1A: NUMBER OF STAFF : CORRECTIONAL OFFICERS

Location: 1349-1354 (width: 6; decimal: 0)

Variable Type: numeric

Range of Missing Values (M): -9

Question:

Section IV -- STAFF SAFETY AND SECURITY Count each employee only once. Classify employees with multiple functions by the function performed most frequently. INCLUDE only payroll and nonpayroll staff. EXCLUDE staff paid through contractual agreements and community volunteers. IV.1. On June 29, 2012, how many staff employed by your jail were - a. Correctional Officers (Deputies, monitors, and other custody staff who spend more than 50% of their time with the incarcerated population.)

Value	Label
-9 (M)	Blank

CORRSTAFF - NUMBER OF STAFF : CORRECTIONAL OFFICERS FLAG

Location: 1355-1356 (width: 2; decimal: 0)

Variable Type: numeric

Range of Missing Values (M): -9

Value	Label
0	Actual
1	Estimated
8	Not applicable
9	Don't know
-9 (M)	Blank

OTHERSTAFF - S4QIV.1B: NUMBER OF STAFF : ALL OTHER STAFF

Location: 1357-1362 (width: 6; decimal: 0)

Variable Type: numeric

Range of Missing Values (M): -9

Question:

IV.1, On June 29, 2012, how many staff employed by your jail were -- b. All other staff (Administrators, clerical and maintenance staff, educational staff, professional and technical staff, and other staff)

<i>Value</i>	<i>Label</i>
-9 (M)	Blank

OTHERSTAFF - NUMBER OF STAFF : ALL OTHER STAFF FLAG

Location: 1363-1364 (width: 2; decimal: 0)

Variable Type: numeric

Range of Missing Values (M): -9

<i>Value</i>	<i>Label</i>
0	Actual
1	Estimated
8	Not applicable
9	Don't know
-9 (M)	Blank

S4QIV1C - S4QIV.1C: NUMBER OF STAFF : TOTAL STAFF

Location: 1365-1370 (width: 6; decimal: 0)

Variable Type: numeric

Range of Missing Values (M): -9

Question:

IV.1c. Total (sum of items IV.1a and IV. 1b)

<i>Value</i>	<i>Label</i>
-9 (M)	Blank

S4QIV1CF - NUMBER OF STAFF : TOTAL STAFF FLAG

Location: 1371-1372 (width: 2; decimal: 0)

Variable Type: numeric

Range of Missing Values (M): -9

<i>Value</i>	<i>Label</i>
0	Actual
1	Estimated
8	Not applicable
9	Don't know
-9 (M)	Blank

ASSAULTSTAFFYN - S4QIV.2: INMATE-INFLICTED PHYSICAL OR SEXUAL ASSAULTS ON FACILITY STAFF

Location: 1373-1374 (width: 2; decimal: 0)

Variable Type: numeric

Range of Missing Values (M): -9

Question:

IV.2. During the 366-DAY period from July 1, 2011 to June 30, 2012, were there any inmate-inflicted physical or sexual assaults on facility staff in your jail jurisdiction? Report any assaults that involved a weapon or serious physical injury requiring medical attention more extensive than first aid. -- 1.Yes/2.No.

<i>Value</i>	<i>Label</i>
1	Yes
2	No
-9 (M)	Blank

ASSAULTCORR - S4QIV.2.1A: ASSAULTS ON CORRECTIONAL OFFICERS

Location: 1375-1380 (width: 6; decimal: 0)

Variable Type: numeric

Range of Missing Values (M): -9

Question:

IV.2. Number of assaults on -- a. Correctional Officers

<i>Value</i>	<i>Label</i>
-9 (M)	Blank

ASSAULTCORRF - ASSAULTS ON CORRECTIONAL OFFICERS FLAG

Location: 1381-1382 (width: 2; decimal: 0)

Variable Type: numeric

Range of Missing Values (M): -9

<i>Value</i>	<i>Label</i>
0	Actual
1	Estimated
8	Not applicable
9	Don't know
-9 (M)	Blank

ASSAULTOTRSTAFF - S4QIV.2.1B: ASSAULTS ON ALL OTHER STAFF

Location: 1383-1388 (width: 6; decimal: 0)

Variable Type: numeric

Range of Missing Values (M): -9

Question:

IV.2. Number of assaults on -- b. All other staff.

<i>Value</i>	<i>Label</i>
-9 (M)	Blank

ASSAULTOTRSTAFFF - ASSAULTS ON ALL OTHER STAFF FLAG

- Study 34884 -

Location: 1389-1390 (width: 2; decimal: 0)

Variable Type: numeric

Range of Missing Values (M): -9

Value	Label
0	Actual
1	Estimated
8	Not applicable
9	Don't know
-9 (M)	Blank

DEATHSTAFFYN - S4QIV.3: STAFF DEATHS AS A RESULT OF ASSAULTS BY INMATES?

Location: 1391-1392 (width: 2; decimal: 0)

Variable Type: numeric

Range of Missing Values (M): -9

Question:

IV.3. During the 366-DAY period from July 1, 2011 to June 30, 2012, were there any staff deaths as a result of assaults by inmates?
1. Yes 2. No

Value	Label
1	Yes
2	No
-9 (M)	Blank

DEATHCORR - S4QIV.3.1A: CORRECTIONAL OFFICER DEATHS INFLICTED BY INMATES

Location: 1393-1394 (width: 2; decimal: 0)

Variable Type: numeric

Range of Missing Values (M): -9

Question:

IV.3. Number of deaths - a. Correctional Officer deaths inflicted by inmates.

Value	Label
-9 (M)	Blank

DEATHCORRF - CORRECTIONAL OFFICER DEATHS INFLICTED BY INMATES FLAG

Location: 1395-1396 (width: 2; decimal: 0)

Variable Type: numeric

Range of Missing Values (M): -9

Value	Label
0	Actual
1	Estimated

- Study 34884 -

Value	Label
8	Not applicable
9	Don't know
-9 (M)	Blank

DEATHOTRSTAFF - S4QIV.3.1B: ALL OTHER STAFF DEATHS INFLICTED BY INMATES

Location: 1397-1398 (width: 2; decimal: 0)

Variable Type: numeric

Range of Missing Values (M): -9

Question:

IV.3. Number of deaths - b. All other staff deaths inflicted by inmates.

Value	Label
-9 (M)	Blank

DEATHOTRSTAFF - ALL OTHER STAFF DEATHS INFLICTED BY INMATES FLAG

Location: 1399-1400 (width: 2; decimal: 0)

Variable Type: numeric

Range of Missing Values (M): -9

Value	Label
0	Actual
1	Estimated
8	Not applicable
9	Don't know
-9 (M)	Blank

PHYSASSAULT - S4QIV.4.1A: PHYSICAL ASSAULT ON ANOTHER INMATE

Location: 1401-1406 (width: 6; decimal: 0)

Variable Type: numeric

Range of Missing Values (M): -9

Question:

IV.4. During the 366-DAY period from July 1, 2011 to June 30, 2012, how many persons CONFINED in your jail jurisdiction were written up or found guilty of -- a. Physical assault on another inmate.

Value	Label
-9 (M)	Blank

PHYSASSAULTF - PHYSICAL ASSAULT ON ANOTHER INMATE FLAG

Location: 1407-1408 (width: 2; decimal: 0)

Variable Type: numeric

Range of Missing Values (M): -9

- Study 34884 -

Value	Label
0	Actual
1	Estimated
8	Not applicable
9	Don't know
-9 (M)	Blank

DRUGVIO - S4QIV.4.1B: DRUG VIOLATION, SUCH AS USE, POSSESSION, OR DEALING DRUGS

Location: 1409-1414 (width: 6; decimal: 0)

Variable Type: numeric

Range of Missing Values (M): -9

Question:

IV.4. During the 366-DAY period from July 1, 2011 to June 30, 2012, how many persons CONFINED in your jail jurisdiction were written up or found guilty of -- b. A drug violation, such as use, possession, or dealing drugs.

Value	Label
-9 (M)	Blank

DRUGVIOF - DRUG VIOLATION, SUCH AS USE, POSSESSION, OR DEALING DRUGS FLAG

Location: 1415-1416 (width: 2; decimal: 0)

Variable Type: numeric

Range of Missing Values (M): -9

Value	Label
0	Actual
1	Estimated
8	Not applicable
9	Don't know
-9 (M)	Blank

ALCOVIO - S4QIV.4.1C: ALCOHOL VIOLATION, INCLUDING UNAUTHORIZED POSSESSION, USE, OR SALE

Location: 1417-1422 (width: 6; decimal: 0)

Variable Type: numeric

Range of Missing Values (M): -9

Question:

IV.4. During the 366-DAY period from July 1, 2011 to June 30, 2012, how many persons CONFINED in your jail jurisdiction were written up or found guilty of --

c. An alcohol violation, including unauthorized possession, use or sale

Value	Label
-9 (M)	Blank

ALCOVIOF - ALCOHOL VIOLATION, INCLUDING UNAUTHORIZED POSSESSION, USE, OR SALE FLAG

Location: 1423-1424 (width: 2; decimal: 0)

Variable Type: numeric

Range of Missing Values (M): -9

Value	Label
0	Actual
1	Estimated
8	Not applicable
9	Don't know
-9 (M)	Blank

WEAPON - S4QIV.4.1D: POSSESSION OF A WEAPON

Location: 1425-1430 (width: 6; decimal: 0)

Variable Type: numeric

Range of Missing Values (M): -9

Question:

IV.4. During the 366-DAY period from July 1, 2011 to June 30, 2012, how many persons CONFINED in your jail jurisdiction were written up or found guilty of --

d. Possession of a weapon.

Value	Label
-9 (M)	Blank

WEAPONF - POSSESSION OF A WEAPON FLAG

Location: 1431-1432 (width: 2; decimal: 0)

Variable Type: numeric

Range of Missing Values (M): -9

Value	Label
0	Actual
1	Estimated
8	Not applicable
9	Don't know
-9 (M)	Blank

STOLENPROP - S4QIV.4.1E: POSSESSION OF STOLEN PROPERTY

Location: 1433-1438 (width: 6; decimal: 0)

- Study 34884 -

Variable Type: numeric

Range of Missing Values (M): -9

Question:

IV.4. During the 366-DAY period from July 1, 2011 to June 30, 2012, how many persons CONFINED in your jail jurisdiction were written up or found guilty of --

e. Possession of stolen property

Value	Label
-9 (M)	Blank

STOLENPROPF - POSSESSION OF STOLEN PROPERTY FLAG

Location: 1439-1440 (width: 2; decimal: 0)

Variable Type: numeric

Range of Missing Values (M): -9

Value	Label
0	Actual
1	Estimated
8	Not applicable
9	Don't know
-9 (M)	Blank

ESCAPE - S4QIV.4.1F: ESCAPE OR ATTEMPTED ESCAPE

Location: 1441-1446 (width: 6; decimal: 0)

Variable Type: numeric

Range of Missing Values (M): -9

Question:

IV.4. During the 366-DAY period from July 1, 2011 to June 30, 2012, how many persons CONFINED in your jail jurisdiction were written up or found guilty of --

f. Escape or attempted escape

Value	Label
-9 (M)	Blank

ESCAPEF - ESCAPE OR ATTEMPTED ESCAPE FLAG

Location: 1447-1448 (width: 2; decimal: 0)

Variable Type: numeric

Range of Missing Values (M): -9

- Study 34884 -

Value	Label
0	Actual
1	Estimated
8	Not applicable
9	Don't know
-9 (M)	Blank

OTHERMAJVIO - S4QIV.4.1G: ANY OTHER MAJOR VIOLATION, INCLUDING WORK SLOWDOWNS, FOOD STRIKES, SETTING FIRE, RIOTING, ETC.

Location: 1449-1454 (width: 6; decimal: 0)

Variable Type: numeric

Range of Missing Values (M): -9

Question:

IV.4. During the 366-DAY period from July 1, 2011 to June 30, 2012, how many persons CONFINED in your jail jurisdiction were written up or found guilty of --

g. Any other major violation, including work slowdowns, food strikes, setting fire, rioting, etc.

Value	Label
-9 (M)	Blank

OTHERMAJVIOF - ANY OTHER MAJOR VIOLATION, INCLUDING WORK SLOWDOWNS, FOOD STRIKES, SETTING FIRE, RIOTING, ETC. FLAG

Location: 1455-1456 (width: 2; decimal: 0)

Variable Type: numeric

Range of Missing Values (M): -9

Value	Label
0	Actual
1	Estimated
8	Not applicable
9	Don't know
-9 (M)	Blank

NCONPOP2 - NONCONFINED POPULATION CALCULATED

Location: 1457-1464 (width: 8; decimal: 0)

Variable Type: numeric

Sample Design for the 2012 Annual Survey of Jails (ASJ)

Stratum	Description		2005 Census of Jail Inmates	Responded ASJ, 2012	Weight (BJSW2)
1	Jurisdiction certainties based on ADP ^a California jail certainties ^{a,b}		269	231 21	1.0649 1.0000
2	Holding at least one juvenile on Census day	ADP between 264 and 499	87	35	2.4857
3		ADP between 141 and 263	103	24	4.2917
4		ADP between 69 and 140	121	14	8.1027
5		ADP between 0 and 68	125	11	11.3636
7	Holding adults only on Census day	ADP between 227 and 749 California jurisdictions ADP between 227 and 749 ^b	229	134 15	1.5507 1.2000
8		ADP between 103 and 226 California jurisdictions ADP between 103 and 226 ^b	354	116 2	2.9654 3.0000
9		ADP between 40 and 102 California jurisdictions ADP between 40 and 102 ^b	587	95 4	5.8292 5.0000
10		ADP between 0 and 39	942	53	16.5887
12	Regional jail certainties ^a		64	64	1.0625
TOTALS			2,881	819	

Note: For this collection year, BJS implemented nonresponse weight adjustment procedures to account for missing data for respondents that did not participate. See Methodology for a description of nonresponse weight adjustment procedures.

^aA jurisdiction is a certainty if either (1) the nonregional jurisdiction held at least one juvenile on Census day and had an average daily population (ADP) of 500 or more, or (2) the nonregional jurisdiction held adults only on Census day and had an ADP of 750 or more.

^bBecause of the California Public Safety Realignment, between midyear 2011 and midyear 2012, California jails experienced a significant increase in the number of inmates (about 8,500 inmates) that was not experienced by jails nationwide. Consequently, California jails do not represent other jail jurisdictions nationwide. To ensure that the sampled (both with certainty and non-certainty) California jail jurisdictions represent California jurisdictions only, BJS computed new weights. Without computing new weights, the estimated nationwide jail population would be erroneously inflated. See Methodology for a description of California jail jurisdictions nonresponse weight adjustment procedures.

Estimated standard errors for selected jail populations, 2012

Confinement status	Total	Standard error	Relative standard error (percent)/b
Total	808,622	8,645	1.1 %
Held in jail/b	744,524	7,874	1.1 %
Supervised outside a jail facility/c	64,098	2,426	3.8
Excluding weekenders	53,746	2,411	4.5
Weekend programs	10,351	370	3.6
Average daily population/d	735,983	7,966	1.1
Rated capacity/e	886,947	13,565	1.5
Admissions during the last week in June/f	222,565	3,674	1.7

a/Calculated by dividing the standard error by the survey estimates and multiplying by 100.

b/Number of inmates held on the last weekday in June.

c/Includes persons under jail supervision but not confined. Excludes persons supervised by a probation or parole agency. Weekend programs allow offenders to serve their sentences of confinement on weekends only (i.e., Friday to Sunday).

d/Total adjusted from 727,374 for nonresponse.

e/Total adjusted from 879,637 for nonresponse.

f/Total adjusted from 219,237 for nonresponse.

Source: Bureau of Justice Statistics, Annual Survey of Jails, 2012.

List of 53 non-responding individual reporting units for the Annual Survey of Jails, 2012

facid21	faclname
011008008061000000000	CALHOUN COUNTY JAIL
011026026061000000000	ELMORE COUNTY JAIL
011028028061000000000	ETOWAH COUNTY DETENTION CENTER
011029029061000000000	FAYETTE COUNTY JAIL
011035035061000000000	HOUSTON COUNTY JAIL
011066066061000000000	WILCOX COUNTY DETENTION CENTER
061051050062000000000	PUEBLO COUNTY DETENTION FACILITY
111011011062000000000	BIBB COUNTY LAW ENFORCEMENT CENTER
111082082061000000000	JENKINS COUNTY JAIL
111094094061000000000	MCDUFFIE COUNTY JAIL
141090090061000000000	TAZEWELL COUNTY JUSTICE CENTER
141099099061000000000	WILL COUNTY ADULT DETENTION CENTER
151022022061000000000	FLOYD COUNTY JAIL
161056056061000000000	LEE COUNTY W.S. BUCK JONES DETENTION CENTER
162097011062000000000	WOODBURY COUNTY LAW ENFORCEMENT CENTER
171008008061000000000	BUTLER COUNTY JAIL
181025025060100000000	CLARK COUNTY DETENTION CENTER
181041041060100000000	GRANT COUNTY JAIL
191018017062000000000	EAST CARROLL PARISH RIVER BEND DET CENTER
191029028060000007700	LA FOURCHE PARISH DETENTION CENTER
191043041060000008000	SABINE PARISH
191056054062000000000	UNION PARISH DETENTION CENTER
191061059060000008400	WEST BATON ROUGE PARISH JAIL
192028004061000000000	LAFAYETTE PARISH CORRECTIONAL CENTER
211016015060000008700	MONTGOMERY COUNTY
221009009060400000000	MIDDLESEX COUNTY JAIL & HOUSE OF CORRECTION
251020020062000000000	GEORGE GREENE CO REGIONAL CORR FACILITY
251025025060000010100	HINDS COUNTY
251046046062000000000	MARION/WALTHALL CO REGIONAL CORR FAC
261081081061000000000	PHELPS COUNTY JAIL
262016001061000000000	CAPE GIRARDEAU CITY JAIL
262096001060000010300	ST LOUIS CITY
271056056061000000000	YELLOWSTONE COUNTY DETENTION FACILITY
301006006061000000000	HILLSBOROUGH COUNTY DEPT OF CORRECTION
321001001061000000000	BERNALILLO COUNTY METRO DETENTION CENTER
331027025061000000000	MADISON COUNTY PUBLIC SAFETY BUILDING
331030028061000000000	NASSAU COUNTY CORRECTIONAL CENTER
341059059061000000000	BERTIE/MARTIN CO REGIONAL JAIL
361045045061000000000	LICKING COUNTY JAIL
361087087061000000000	WOOD COUNTY JAIL
411013013060000019700	CHESTERFIELD COUNTY DETENTION CENTER
411013013060100019701	CHESTERFIELD COUNTY WORK CAMP
422062004061000000000	WINNER CITY JAIL
431007007061000000000	CAMPBELL COUNTY JAIL
431036036061000000000	HARDIN COUNTY JAIL
431090090061000000000	WASHINGTON COUNTY JAIL
432019003060000014600	DAVIDSON COUNTY SHERIFFS OFFICE
438019003068000000000	METRO DAVIDSON COUNTY DETENTION FAC- C.C.A.
441070070061000000000	ELLIS COUNTY JAIL
441137137061000000000	KLEBERG COUNTY JAIL
441178178061000000000	NUECES COUNTY JAIL
471074074061000000000	PIEDMONT REGIONAL JAIL
501037037061000000000	MARATHON COUNTY ADULT DETENTION FACILITY

Closed Reporting Units

191018017061000000000
292002003061000000000
448176176062000000000
471005005061000000000
482017020061000000000

Temporarily Closed Reporting Units

268041041062000000000
361055055062000000000

Out of Scope Reporting Units

448082082061000000000
448147147062000000000

faclname
EAST CARROLL PARISH DETENTION CENTER
NORTH LAS VEGAS DETENTION CENTER
NEWTON CO CORRECTIONAL CENTER - GEO
AMHERST COUNTY JAIL
RENTON CITY JAIL

faclname

BRIDEWELL DETENTION CENTER, LLC
MIAMI COUNTY INCARCERATION FACILITY

faclname

FRIO COUNTY JAIL - GEO
LIMESTONE COUNTY DETENTION CENTER-CIVIGENICS

city	state	stratum	weight (original)
Anniston	AL	7	1.4136
WETUMPKA	AL	7	1.4136
Gadsden	AL	1	1.0000
Fayette	AL	9	5.5377
DOTHAN	AL	7	1.4136
CAMDEN	AL	10	15.7000
Pueblo	CO	1	1.0000
MACON	GA	1	1.0000
MILLEN	GA	10	15.7000
THOMSON	GA	8	2.7519
PEKIN	IL	8	2.7519
JOLIET	IL	1	1.0000
New Albany	IN	7	1.4136
MONTROSE	IA	9	5.5377
SIOUX CITY	IA	7	1.4136
EL DORADO	KS	8	2.7519
WINCHESTER	KY	8	2.7519
Williamstown	KY	7	1.4136
Lake Providence	LA	1	1.0000
Thibodaux	LA	7	1.4136
MANY	LA	4	7.5625
Farmerville	LA	2	2.4167
Port Allen	LA	7	1.4136
LAFAYETTE	LA	1	1.0000
Rockville	MD	1	1.0000
BILLERICA	MA	1	1.0000
LUCEDALE	MS	12	1.0000
RAYMOND	MS	1	1.0000
Columbia	MS	12	1.0000
ROLLA	MO	9	5.5377
Cape Girardeau	MO	10	15.7000
St. Louis	MO	1	1.0000
Billings	MT	7	1.4136
MANCHESTER	NH	1	1.0000
Albuquerque	NM	1	1.0000
Wampsville	NY	8	2.7519
EAST MEADOW	NY	1	1.0000
WINDSOR	NC	12	1.0000
NEWARK	OH	7	1.4136
BOWLING GREEN	OH	8	2.7519
CHESTERFIELD	SC	8	2.7519
Chesterfield	SC	8	2.7519
WINNER	SD	9	5.5377
JACKSBORO	TN	8	2.7519
SAVANNAH	TN	9	5.5377
JONESBOROUGH	TN	7	1.4136
Nashville	TN	1	1.0000
NASHVILLE	TN	1	1.0000
Waxahacie	TX	7	1.4136
KINGSVILLE	TX	8	2.7519
CORPUS CHRISTI	TX	1	1.0000
FARMVILLE	VA	12	1.0000
Wausau	WI	7	1.4136

city	state	stratum	weight (original)
Lake Providence	LA	1	1.0000
North Las Vegas	NV	1	1.0000
NEWTON	TX	7	1.4136
AMHERST	VA	4	7.5625
Renton	WA	9	5.5377

city	state	stratum	weight (original)
BETHANY	MO	7	1.4136
TROY	OH	2	2.4167

city	state	stratum	weight (original)
PEARSALL	TX	8	2.7519
GROESBECK	TX	1	1.0000



May 2013, NCJ 241264

Jail Inmates at Midyear 2012 - Statistical Tables

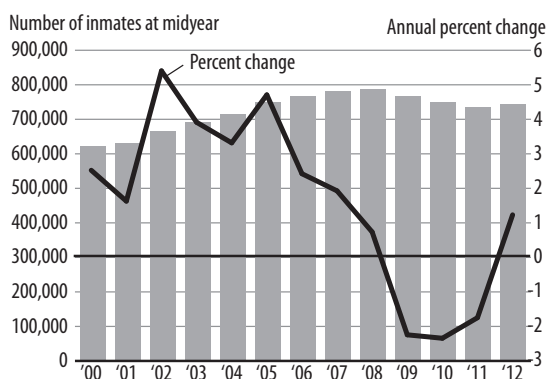
Todd D. Minton, *BJS Statistician*

After three consecutive years of decline in the jail inmate population, the number of persons confined in county and city jails (744,524) increased by 1.2% (or 8,923 inmates) between midyear 2011 and midyear 2012 (**figure 1, table 1**). The majority of the increase occurred in California jails. Excluding the increase in California's jail population, the nationwide jail population would have remained relatively stable during the period. (For more information on California, see the text box on page 2.)

The average daily population (ADP) in jails remained stable from 735,565 during the 12-month period ending June 30, 2011, and 735,983 during the 12-month period ending June 30, 2012. The jail incarceration rate—the confined population per 100,000 U.S. residents—remained stable between 2011 (236 per 100,000) and 2012 (237 per 100,000). The incarceration rate was down from a high of 259 jail inmates per 100,000 residents in 2007.

Overall, males accounted for 87% of the jail population at midyear 2012 (**tables 2 and 3**). Whites accounted for 46% of the total, blacks represented 37%, and Hispanics represented 15% of inmates. About 5,400 juveniles were held in local jails (or less than 1% of the confined population). At midyear 2012, about 6 in 10 inmates were not convicted, but were in jail awaiting court action on a current charge—a rate unchanged since 2005. About 4 in 10 inmates were sentenced offenders or convicted offenders awaiting sentencing.

FIGURE 1
Inmates confined in local jails at midyear and percent change in the jail population, 2000–2012



Source: Bureau of Justice Statistics, Annual Survey of Jails, midyear 2000–2004 and midyear 2006–2012, and the Census of Jail Inmates, midyear 2005.

The majority of the increase in the jail inmate population occurred in large jails

Nearly 91% of the increase in the confined population during 2012 occurred in the largest jail jurisdictions—those with an average daily population of more than 1,000 inmates (**table 4**). The largest jails held 48% of the jail population at midyear 2012, but accounted for less than 10% of all jail jurisdictions nationwide. The population declined in jail jurisdictions holding 500 to 999 inmates. The share of offenders in jail jurisdictions holding less than 500 inmates did not change significantly between 2011 and 2012, indicating that these jail jurisdictions had somewhat similar rates of increase in their population.

California Public Safety Realignment

On May 23, 2011, the U.S. Supreme Court upheld the ruling by a lower three-judge court that the State of California must reduce its prison population to 137.5% of design capacity (approximately 110,000 prisoners) within two years to alleviate overcrowding. In response, the California State Legislature and governor enacted two laws—AB 109 and AB 117—to reduce the number of inmates housed in state prisons starting October 1, 2011.

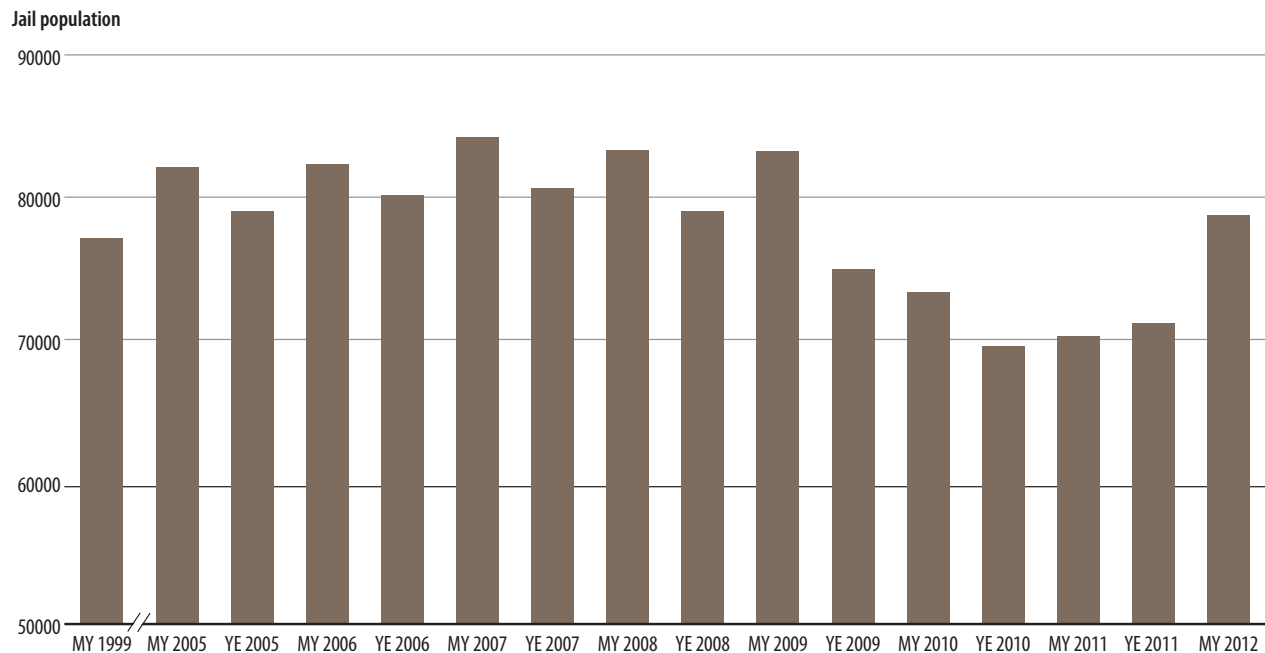
The Public Safety Realignment (PSR) policy is designed to reduce the prison population through normal attrition of the existing population while placing new nonviolent, nonserious, nonsex offenders under county jurisdiction for incarceration in local jail facilities. Inmates released from local jails will be placed under a county-directed post-release community supervision program instead of the

state's parole system. The state is giving additional funding to the 58 counties in California to deal with the increased correctional population and responsibility; however, each county must develop a plan for custody and post-custody that best serves the needs of the county.

After record low jail populations between yearend 2010 and yearend 2011, the California jail population increased in 2012 by an estimated 7,600 inmates since yearend 2011 (**figure 2**).

The Bureau of Justice Statistics will continue to analyze population characteristics in California's jails and describe how these jails affect the nationwide jail population.

FIGURE 2
California's confined jail population, 1999 and 2005–2012



Note: MY is the midyear population, or the number of inmates held on the last weekday in June. YE is the yearend count, or the number of inmates held on December 31. See *Methodology* for detail on estimating California's midyear jail population. Data are rounded.

Source: Bureau of Justice Statistics, Census of Jails, 1999 and 2005; Annual Survey of Jails, midyear 2006–2012; and Deaths in Custody Reporting Program, yearend 2005–2011.

Increase in new bed space between 2011 and 2012 was nearly a third of the average annual increase since 2000, while the percentage of capacity occupied held steady

Rated capacity in jails reached 886,947 beds at midyear 2012, an increase of 0.8% (7,225 beds) from 879,722 beds in midyear 2011 (**figure 3, table 5**). The increase between 2011 and 2012 was about a third of the average annual increase each year between 2000 and 2011 (2.4% or 20,942 beds). Rated capacity is the maximum number of beds or inmates allocated to each jail facility by a state or local rating official.

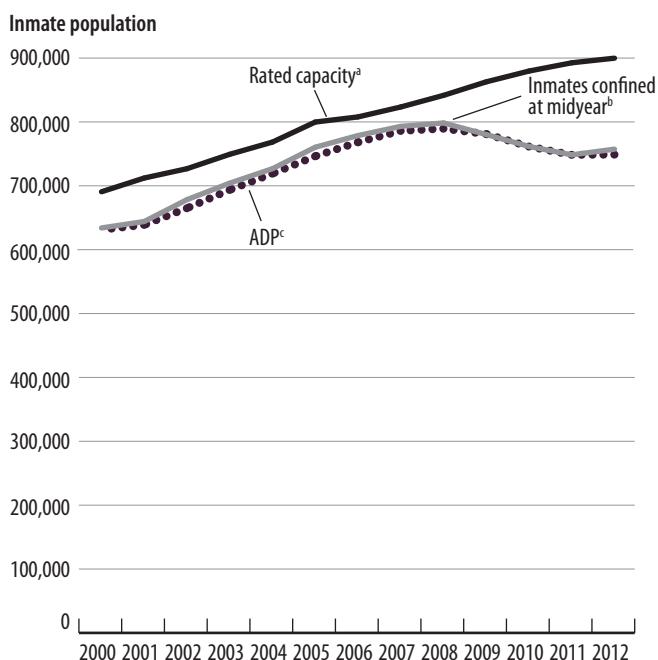
The percentage of rated capacity occupied at midyear 2012 (84%) was the lowest since 1984 (86%). Jail jurisdictions holding 1,000 or more inmates reported the highest percentage of occupied bed space at midyear 2011 (88%) and 2012 (89%), compared to jails holding fewer than 50 inmates at midyear 2011 and 2012 (66% in each years) (**table 6**).

In addition to measuring the rated capacity occupied based on the inmate count at midyear, the measurement can be based on an ADP in jail jurisdictions during the 12-month period ending June 30, 2012, and by the number of inmates on the most crowded day in jails during June 2012. Using these two measures, the nation's jails operated at about 83% of rated capacity on an average day and about 90% of rated capacity on their most crowded day in June 2012.

While the confined population and rated jail capacity both increased at roughly comparable rates from 2000 through 2008, the growth rates have diverged since 2008. The confined population declined by about 1.3% on average per year, while rated capacity increased by about 1.7% on average per year. The increase in capacity and decrease in confined population almost equally contributed to the decline in the percentage of capacity occupied, from 95% in 2008 to 84% in 2012.

FIGURE 3

Annual counts of the midyear custody population, average daily population, and rated capacity in local jails, 2000–2012



^aMaximum number of beds or inmates assigned by a rating official to a facility, excluding separate temporary holding areas.

^bNumber of inmates held on the last weekday in June.

^cSum of all inmates in jail each day for a year, divided by the number of days in the year. Based on revised data for 2011.

Source: Bureau of Justice Statistics, Annual Survey of Jails, midyear 2000–2004 and midyear 2006–2012, and the 2005 Census of Jail Inmates.

Jail jurisdictions holding between 100 and 249 inmates experienced the largest difference in change rates between rated capacity and the jail inmate population (**figure 4**). From midyear 2008 to 2012, these jail jurisdictions reported a 2.8% decline in their inmate custody population and a 21.6% increase in their rated capacity. The smallest jail jurisdictions, which held fewer than 50 inmates, reported the smallest difference between change in their inmate population (down 1.1%) and change in rated capacity (up 6.4%). With the exception of an increase in the inmate population for jail jurisdictions holding 50 to 99 inmates, all other jail jurisdictions experienced a decline in their midyear jail population and an increase in their rated capacity.

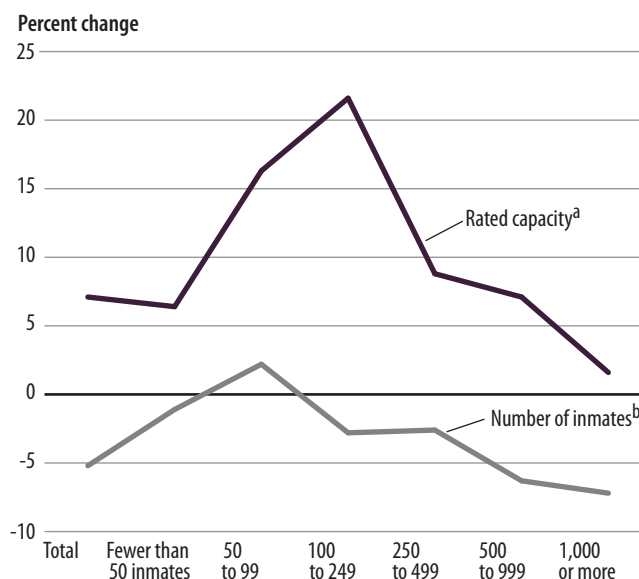
Local jails admitted 11.6 million persons during the 12-month period ending midyear 2012

Local jails admitted an estimated 11.6 million persons during the 12-month period ending June 30, 2012, which was similar to 2011 (11.8 million) and down from 13.6 million in 2008. The number of persons admitted in 2012 was about 16 times the size of the ADP (735,983) during the 12-month period between July 1, 2011 and June 30, 2012. (See *Methodology* for methods used to estimate admissions.)

Nearly 4 in 10 admissions during the last week of June 2012 were to the largest jail jurisdictions (**table 7**). Jail jurisdictions holding fewer than 50 inmates accounted for 7.2% of all jail admissions. The number of inmates admitted was about 35 times the size of the ADP between 2011 and 2012. These small jail jurisdictions also experienced the

highest turnover rate (131%). The turnover rate in large jail jurisdictions was 50%. Higher turnover rates mean larger numbers of admissions and releases relative to the size of the average daily population.

FIGURE 4
Percent change in the midyear custody population and rated capacity between 2008 and 2012



Note: Jurisdiction size is based on the average daily population (ADP) during the 12 months ending midyear 2006. ADP is the sum of all inmates in jail each day for a year, divided by the number of days in the year.

^aMaximum number of beds or inmates assigned by a rating official to a facility, excluding separate temporary holding areas.

^bNumber of inmates held on the last weekday in June.

Source: Bureau of Justice Statistics, Annual Survey of Jails, 2008 and 2012.

List of tables

TABLE 1. Inmates confined in local jails at midyear, average daily population, and incarceration rates, 2000–2012

TABLE 2. Number of inmates in local jails, by characteristics, midyear 2000 and 2005–2012

TABLE 3. Percent of inmates in local jails, by characteristics, midyear 2000 and 2005–2012

TABLE 4. Inmates confined in local jails at midyear, by size of jurisdiction, 2011–2012

TABLE 5. Rated capacity of local jails and percent of capacity occupied, 2000–2012

TABLE 6. Percent of jail capacity occupied at midyear, by size of jurisdiction, 2011–2012

TABLE 7. Average daily jail population, admissions, and turnover rate, by size of jurisdiction, week ending June 30, 2011 and 2012

TABLE 8. Inmate population in jail jurisdictions reporting on confined persons being held for U.S. Immigration and Customs Enforcement (ICE), midyear 2002–2012

TABLE 9. Persons under jail supervision, by confinement status and type of program, midyear 2000 and 2006–2012

TABLE 10. Estimated standard errors for selected jail populations, 2012

TABLE 11. Estimated standard errors, by selected inmate characteristics, midyear 2012

TABLE 12. Estimated percentages of local jail inmates, by selected characteristics and ratio estimates, midyear 2012

TABLE 1**Inmates confined in local jails at midyear, average daily population, and incarceration rates, 2000–2012**

Year	Inmates confined at midyear ^a			Average daily population ^b			Jail incarceration rate ^c
	Total	Year-to-year change		Total	Year-to-year change		
		Number	Percent		Number	Percent	
2000	621,149	15,206	2.5%	618,319	10,341	1.7%	220
2001	631,240	10,091	1.6	625,966	7,647	1.2	222
2002	665,475	34,235	5.4	652,082	26,116	4.2	231
2003	691,301	25,826	3.9	680,760	28,678	4.4	238
2004	713,990	22,689	3.3	706,242	25,482	3.7	243
2005	747,529	33,539	4.7	733,442	27,200	3.9	252
2006	765,819	18,290	2.4	755,320	21,878	3.0	256
2007	780,174	14,355	1.9	773,138	17,818	2.4	259
2008	785,533	5,359	0.7	776,573	3,435	0.4	258
2009	767,434	-18,099	-2.3	768,135	-8,438	-1.1	250
2010	748,728	-18,706	-2.4	748,553	-19,582	-2.5	242
2011	735,601	-13,127	-1.8	735,565	-12,988	-1.7	236
2012	744,524	8,923	1.2	735,983	418	0.1	237
Average annual change							
2000–2011			1.5%			1.6%	
2011–2012			1.2			0.1	

Note: Year-to-year change is rounded and may not match difference in totals.

^aNumber of inmates held on the last weekday in June.

^bSum of all inmates in jail each day for a year, divided by the number of days in the year.

^cNumber of inmates confined at midyear per 100,000 U.S. residents.

Source: Bureau of Justice Statistics, Annual Survey of Jails, midyear 2000–2004 and midyear 2006–2012, and the 2005 Census of Jail Inmates.

TABLE 2**Number of inmates in local jails, by characteristics, midyear 2000 and 2005–2012**

Characteristic	2000	2005	2006	2007	2008	2009	2010	2011 ^a	2012 ^a
Total^b	621,149	747,529	765,819	780,174	785,533	767,434	748,728	735,601	744,524
Sex									
Male	550,162	652,958	666,819	679,654	685,862	673,728	656,360	642,300	645,900
Female	70,987	94,571	99,000	100,520	99,670	93,706	92,368	93,300	98,600
Adult	613,534	740,770	759,717	773,341	777,829	760,216	741,168	729,700	739,100
Male	543,120	646,807	661,164	673,346	678,657	667,039	649,284	636,900	640,900
Female	70,414	93,963	98,552	99,995	99,172	93,176	91,884	92,800	98,100
Juvenile^c	7,615	6,759	6,102	6,833	7,703	7,218	7,560	5,900	5,400
Held as adult ^d	6,126	5,750	4,835	5,649	6,410	5,846	5,647	4,600	4,600
Held as juvenile	1,489	1,009	1,268	1,184	1,294	1,373	1,912	1,400	900
Race/Hispanic origin^e									
White ^f	260,500	331,000	336,500	338,200	333,300	326,400	331,600	329,400	341,100
Black/African American ^f	256,300	290,500	295,900	301,700	308,000	300,500	283,200	276,400	274,600
Hispanic/Latino	94,100	111,900	119,200	125,500	128,500	124,000	118,100	113,900	112,700
Other ^{f,g}	10,200	13,000	13,500	13,900	14,000	14,800	15,000	14,700	14,700
Two or more races ^f	...	1,000	700	800	1,300	1,800	800	1,200	1,500

Note: Detail may not sum to total due to rounding.

...Not collected.

^aData for 2011 and 2012 are adjusted for nonresponse and rounded to the nearest 100.

^bMidyear count is the number of inmates held on the last weekday in June.

^cPersons under age 18 at midyear.

^dIncludes juveniles who were tried or awaiting trial as adults.

^eData adjusted for nonresponse and rounded to the nearest 100. See *Methodology*.

^fExcludes persons of Hispanic or Latino origin.

^gIncludes American Indians, Alaska Natives, Asians, Native Hawaiians, and other Pacific Islanders.

Source: Bureau of Justice Statistics, Annual Survey of Jails, 2000 and midyear 2006–2012, and the 2005 Census of Jail Inmates.

TABLE 3**Percent of inmates in local jails, by characteristics, midyear 2000 and 2005–2012**

Characteristic	2000	2005	2006	2007	2008	2009	2010	2011	2012
Sex									
Male	88.6%	87.3%	87.1%	87.1%	87.3%	87.8%	87.7%	87.3%	86.8%
Female	11.4	12.7	12.9	12.9	12.7	12.2	12.3	12.7	13.2
Adult	98.8%	99.1%	99.2%	99.1%	99.0%	99.1%	99.0%	99.2%	99.3%
Male	87.4	86.5	86.3	86.3	86.4	86.9	86.7	86.6	86.1
Female	11.3	12.6	12.9	12.8	12.6	12.1	12.3	12.6	13.2
Juvenile^a	1.2%	0.9%	0.8%	0.9%	1.0%	0.9%	1.0%	0.8%	0.7%
Held as adult ^b	1.0	0.8	0.6	0.7	0.8	0.8	0.8	0.6	0.6
Held as juvenile	0.2	0.1	0.2	0.2	0.2	0.2	0.3	0.2	0.1
Race/Hispanic origin^c									
White ^d	41.9%	44.3%	43.9%	43.3%	42.5%	42.5%	44.3%	44.8%	45.8%
Black/African American ^d	41.3	38.9	38.6	38.7	39.2	39.2	37.8	37.6	36.9
Hispanic/Latino	15.2	15.0	15.6	16.1	16.4	16.2	15.8	15.5	15.1
Other ^{d,e,f}	1.6	1.7	1.8	1.8	1.8	1.9	2.0	2.0	2.0
Two or more races ^{d,f}	...	0.1	0.1	0.1	0.2	0.2	0.1	0.2	0.2
Conviction status^{b,c}									
Convicted	44.0%	38.0%	37.9%	38.0%	37.1%	37.8%	38.9%	39.4%	39.4%
Male	39.0	33.2	32.8	32.9	32.3	33.0
Female	5.0	4.9	5.0	5.2	4.8	4.8
Unconvicted	56.0%	62.0%	62.1%	62.0%	62.9%	62.2%	61.1%	60.6%	60.6%
Male	50.0	54.2	54.3	54.3	55.2	54.8
Female	6.0	7.7	7.8	7.7	7.8	7.4

Note: Percentages are based on the total number of inmates held on the last weekday in June. Detail may not sum to total due to rounding.

...Not collected. Starting in 2010, the Annual Survey of Jails did not collect data on conviction status by sex.

^aPersons under age 18 at midyear.

^bIncludes juveniles who were tried or awaiting trial as adults.

^cData adjusted for nonresponse. See *Methodology*.

^dExcludes persons of Hispanic or Latino origin.

^eIncludes American Indians, Alaska Natives, Asians, Native Hawaiians, and other Pacific Islanders.

^fBased on revised data for 2011.

Source: Bureau of Justice Statistics, Annual Survey of Jails, 2000 and midyear 2006–2012, and the 2005 Census of Jail Inmates.

TABLE 4**Inmates confined in local jails at midyear, by size of jurisdiction, 2011–2012**

Jurisdiction size ^b	Inmates confined at midyear ^a				Percent of all inmates	
	2011	2012	Difference	Percent change	2011	2012
Total	735,601	744,524	8,923	1.2%	100%	100%
Fewer than 50 inmates	24,592	25,091	499	2.0%	3.3%	3.4%
50 to 99	41,091	41,630	539	1.3	5.6	5.6
100 to 249	92,120	93,085	965	1.0	12.5	12.5
250 to 499	101,535	102,640	1,105	1.1	13.8	13.8
500 to 999	125,785	123,512	-2,273	-1.8	17.1	16.6
1,000 or more ^b	350,477	358,567	8,090	2.3	47.6	48.2

Note: Detail may not sum to total due to rounding.

^aNumber of inmates held on the last weekday in June.

^bBased on the average daily population (ADP) during the 12-month period ending June 30, 2006, the first year in the current Annual Survey of Jails series. ADP is the sum of all inmates in jail each day for a year, divided by the number of days in the year.

Source: Bureau of Justice Statistics, Annual Survey of Jails, 2011–2012.

TABLE 5
Rated capacity of local jails and percent of capacity occupied, 2000–2012

Year	Rated capacity ^c	Year-to-year change in rated capacity ^a		Percent of capacity occupied ^b	
		Number	Percent	Midyear ^d	Average daily population ^e
2000	677,787	25,466	3.9%	92.0%	91.2%
2001	699,309	21,522	3.2	90.0	89.5
2002	713,899	14,590	2.1	93.0	91.3
2003	736,471	22,572	3.2	94.0	92.4
2004	755,603	19,132	2.6	94.0	93.5
2005	786,954	33,398	4.1	95.0	93.2
2006	794,984	8,638	1.0	96.3	95.0
2007	810,543	15,863	2.0	96.3	95.4
2008	828,714	18,171	2.2	94.8	93.7
2009	849,895	21,181	2.6	90.3	90.4
2010	866,782	16,887	2.0	86.4	86.4
2011	879,722	12,940	1.5	83.6	83.6
2012	886,947	7,225	0.8	83.9	83.0
Average annual change					
2000–2011	2.4%	20,942			
2011–2012	0.8	7,225			

Note: Rated capacity data for 2000–2004 and 2006–2012 were survey estimates subject to sampling error. Year-to-year change is rounded and may not match difference in totals.

^aIncrease or reduction in the number of beds during the 12 months ending midyear of each year. Number and percentage change for 2000 are calculated using the rated capacity of 652,321 for 1999.

^bBased on the confined inmate population divided by the rated capacity and multiplied by 100.

^cMaximum number of beds or inmates assigned by a rating official to a facility, excluding separate temporary holding areas.

^dNumber of inmates held on the last weekday in June.

^eSum of all inmates in jail each day for a year, divided by the number of days in the year.

Source: Bureau of Justice Statistics, Annual Survey of Jails, midyear 2000–2004 and midyear 2006–2012, and the 2005 Census of Jail Inmates.

TABLE 6
Percent of jail capacity occupied at midyear, by size of jurisdiction, 2011–2012

Jurisdiction size ^b	Percent of capacity occupied ^a	
	2011	2012
Total	83.6%	83.9%
Fewer than 50 inmates	65.9%	66.2%
50 to 99	72.8	72.1
100 to 249	74.3	73.5
250 to 499	86.4	87.5
500 to 999	85.8	85.9
1,000 or more	88.1	88.8

^aNumber of inmates held on the last weekday in June divided by the rated capacity multiplied by 100.

^bBased on the average daily population during the 12-month period ending June 30, 2006, the first year in the current Annual Survey of Jails series.

Source: Bureau of Justice Statistics, Annual Survey of Jails, 2011–2012.

TABLE 7**Average daily jail population, admissions, and turnover rate, by size of jurisdiction, week ending June 30, 2011 and 2012**

Jurisdiction size ^c	Average daily population ^a			Estimated number of admissions during the last week in June		Weekly turnover rate ^b	
	2011	2012	Difference	2011	2012	2011	2012
Total	735,565	735,983	418	226,944	222,565	61.4%	60.2%
Fewer than 50 inmates	24,378	23,832	-546	15,217	15,987	125.8%	130.6%
50 to 99	40,857	42,778	1,921	17,157	17,905	83.3	83.2
100 to 249	91,212	89,957	-1,255	35,944	34,491	77.4	74.3
250 to 499	100,567	100,487	-80	34,772	32,105	68.3	63.2
500 to 999	126,099	122,837	-3,262	35,596	34,050	56.9	56.7
1,000 or more	352,452	356,092	3,640	88,257	88,028	49.9	49.6

Note: Detail may not sum to total due to rounding. See *Methodology* for more detail on estimation procedures.

^aSum of all inmates in jail each day for a year. Based on revised data for 2011.

^bCalculated by adding weekly admissions and releases, dividing by the average daily population and multiplying by 100. Based on revised data for 2011.

^cBased on the average daily population during the 12-month period ending June 30, 2006, the first year in the current Annual Survey of Jails series.

Source: Bureau of Justice Statistics, Annual Survey of Jails, 2011–2012.

TABLE 8**Inmate population in jail jurisdictions reporting on confined persons being held for U.S. Immigration and Customs Enforcement (ICE), midyear 2002–2012**

Year	Jurisdictions reporting on holdings for ICE ^a	Inmates confined at midyear ^b	Confined persons held for ICE at midyear	
			Number	Percent of all inmates
2002	2,961	626,870	12,501	2.0%
2003	2,940	637,631	13,337	2.1
2004	2,962	673,807	14,120	2.1
2005	2,824	703,084	11,919	1.7
2006	2,784	698,108	13,598	1.9
2007	2,713	683,640	15,063	2.2
2008	2,699	704,278	20,785	3.0
2009	2,643	685,500	24,278	3.5
2010	2,531	622,954	21,607	3.5
2011	2,758	672,643	22,049	3.3
2012	2,716	690,337	22,870	3.3

^aNot all jurisdictions reported on holdings for ICE.

^bNumber of inmates held on the last weekday in June.

Source: Bureau of Justice Statistics, Annual Survey of Jails, midyear 2002–2004 and midyear 2006–2012, and the 2005 Census of Jail Inmates.

TABLE 9**Persons under jail supervision, by confinement status and type of program, midyear 2000 and 2006–2012**

Confinement status and type of program	2000	2006	2007	2008	2009	2010	2011	2012
Total	687,033	826,041	848,419	858,385	837,647	809,360	798,417	808,622
Held in jail ^a	621,149	765,819	780,174	785,533	767,434	748,728	735,601	744,524
Supervised outside of a jail facility ^b	65,884	60,222	68,245	72,852	70,213	60,632	62,816	64,098
Weekend programs ^c	14,523	11,421	10,473	12,325	11,212	9,871	11,369	10,351
Electronic monitoring	10,782	10,999	13,121	13,539	11,834	12,319	11,950	13,779
Home detention ^d	332	807	512	498	738	736	809	2,129
Day reporting	3,969	4,841	6,163	5,758	6,492	5,552	5,200	3,890
Community service	13,592	14,667	15,327	18,475	17,738	14,646	11,680	14,761
Other pretrial supervision	6,279	6,409	11,148	12,452	12,439	9,375	10,464	7,738
Other work programs ^e	8,011	8,319	7,369	5,808	5,912	4,351	7,165	7,137
Treatment programs ^f	5,714	1,486	2,276	2,259	2,082	1,799	2,449	2,164
Other	2,682	1,273	1,857	1,739	1,766	1,983	1,731	2,149

^aNumber of inmates held on the last weekday in June.^bNumber of persons under jail supervision but not confined on the last weekday in June. Excludes persons supervised by a probation or parole agency.^cOffenders serve their sentences of confinement on weekends only (i.e., Friday to Sunday).^dIncludes only persons without electronic monitoring.^eIncludes persons in work release programs, work gangs, and other alternative work programs.^fIncludes persons under drug, alcohol, mental health, and other medical treatment.

Source: Bureau of Justice Statistics, Annual Survey of Jails, 2000 and midyear 2006–2012.

TABLE 10**Estimated standard errors for selected jail populations, 2012**

Confinement status	Total	Standard error	Relative standard error ^a
Total	808,622	8,645	1.1%
Held in jail ^b	744,524	7,874	1.1%
Supervised outside a jail facility ^c	64,098	2,426	3.8
Excluding weekenders	53,746	2,411	4.5
Weekend programs	10,351	370	3.6
Average daily population ^d	735,983	7,966	1.1
Rated capacity ^e	886,947	13,565	1.5
Admissions during the last week in June ^f	222,565	3,674	1.7

^aCalculated by dividing the standard error by the survey estimates and multiplying by 100.^bNumber of inmates held on the last weekday in June.^cIncludes persons under jail supervision but confined. Excludes persons supervised by a probation or parole agency. Weekend programs allow offenders to serve their sentences of confinement on weekends only (i.e., Friday to Sunday).^dTotal adjusted from 727,374 for nonresponse. See *Methodology*.^eTotal adjusted from 879,637 for nonresponse. See *Methodology*.^fTotal adjusted from 219,237 for nonresponse. See *Methodology*.

Source: Bureau of Justice Statistics, Annual Survey of Jails, 2012.

TABLE 11**Estimated standard errors, by selected inmate characteristics, midyear 2012**

Characteristic	Total ^a	Survey estimate	Standard error	Relative standard error (percent) ^b
Sex				
Male	645,900	636,708	6,935	1.1%
Female	98,600	97,190	1,433	1.5
Adult	739,100	728,547	7,846	1.1%
Juvenile^c	5,400	5,351	242	4.5%
Held as adult ^d	4,600	4,489	231	5.1
Held as juvenile	900	862	84	9.7
Race/Hispanic origin^e				
White ^f	341,100	304,762	4,463	1.5%
Black/African American ^f	274,600	245,376	4,654	1.9
Hispanic/Latino	112,700	100,682	2,969	2.9
Other ^{f,g}	14,700	13,118	901	6.9
Two or more races ^f	1,500	1,320	161	12.2
Conviction status^{d,e}				
Convicted	293,100	248,800	3,769	1.5%
Unconvicted	451,400	383,152	6,055	1.6

Note: Detail may not sum to total due to rounding.

^aData adjusted for nonresponse and rounded to the nearest 100.

^bCalculated by dividing the standard error by the survey estimates and multiplying by 100.

^cPersons under age 18 at midyear.

^dIncludes juveniles who were tried or awaiting trial as adults.

^eTotal rounded to nearest 100.

^fExcludes persons of Hispanic or Latino origin.

^gIncludes American Indians, Alaska Natives, Asians, Native Hawaiians, and other Pacific Islanders.

Source: Bureau of Justice Statistics, Annual Survey of Jails, 2012.

TABLE 12**Estimated percentages of local jail inmates, by selected characteristics and ratio estimates, midyear 2012**

Characteristic	Estimate	Standard error
Sex		
Male	86.8%	0.1%
Female	13.2	0.1
Race/Hispanic origin		
White ^a	45.8%	0.5%
Black/African American ^a	36.9	0.5
Hispanic/Latino	15.1	0.4
Other ^{a,b}	2.0	0.1
Two or more races ^a	0.2	--
Conviction status^c		
Convicted	39.4%	0.5%
Unconvicted	60.6	0.5

Note: Detail may not sum to total due to rounding.

--Less than 0.05%.

^aExcludes persons of Hispanic or Latino origin.

^bIncludes American Indians, Alaska Natives, Asians, Native Hawaiians, and other Pacific Islanders.

^cIncludes juveniles who were tried or awaiting trial as adults.

Source: Bureau of Justice Statistics, Annual Survey of Jails, 2012.

Methodology

Annual Survey of Jails

In years between the complete census of local jails, the Bureau of Justice Statistics (BJS) conducts the Annual Survey of Jails (ASJ). ASJ uses a sample of jail jurisdictions to estimate the number and characteristics of local inmates nationwide. For the 2012 ASJ, the U.S. Census Bureau, as the collection agent, drew a sample of 874 jail jurisdictions represented by 929 jail facilities (referred to as reporting units). This sample represents about 2,800 jail jurisdictions nationwide. Local jail jurisdictions include counties (parishes in Louisiana) or municipal governments that administer one or more local jails.

The 2012 ASJ sample included all jails with certainty (67) that were operated jointly by two or more jurisdictions (also referred to as multi-jurisdictional jails). Other jail jurisdictions included with certainty (268) were those that—

- held juvenile inmates at the time of the 2005 Census of Jail Inmates and had an average daily population (ADP) of 500 or more inmates during the 12 months ending June 30, 2005
- held only adult inmates and had an ADP of 750 or more.

The remaining jurisdictions were stratified into two groups: jurisdictions with jails holding at least one juvenile on June 30, 2005, and jails holding only adults on that date. Using stratified random sampling, 538 jurisdictions were selected from eight strata based on the two conditions described above, and from four strata based on the average daily jail inmate population reported in the latest Census of Jail Inmates completed in 2005.

BJS obtained data from sampled jail jurisdictions by mailed and web-based survey questionnaires. After follow-up phone calls and facsimiles, the response rate for data reporters was nearly 100% for critical items, such as the number of inmates confined, ADP, and rated capacity. (See tables 10, 11, and 12 for standard errors associated with reported estimates from the ASJ 2012.)

Response rate, nonresponse adjustment, and out-of-scope jail facilities

The 2012 ASJ sampling frame comprised 929 reporting units. Ninety-four percent (or 861) of the 920 individual reporting units responded to the 2012 data collection, and 59 individual reporting units did not respond to the survey.*

*The sampling frame initially comprised 929 units. However, nine units were out-of-scope for the 2012 data collection because they had closed, either permanently or temporarily, which resulted in the sampling frame of 920 active respondents.

BJS imputed the data for six of these 59 non-responding reporting units, as they belong to jurisdictions with at least one responding reporting unit (hence their jurisdiction is partial responder). For the remaining 53 reporting units (that did not respond) BJS implemented nonresponse weights adjustment procedures.

Respondent indicators



The respondent reporting unit indicator $JAILR_{hij}$ is set for each individual reporting unit j in jurisdiction i in stratum h on the file, based on the status of the individual reporting unit.

$$JAILR_{hij} = \begin{cases} 1 & \text{if respondent or using prior year data} \\ 0 & \text{if nonrespondent, closed, or out-of-scope.} \end{cases}$$

The respondent jurisdiction indicator $JURISR_{hi}$ is set for each jurisdiction i in stratum h on the file, based on the value of $JAILR_{hij}$ for the reporting units within the jurisdiction.

$$JURISR_{hi} = \begin{cases} 1 & \text{if } \sum_{j=1}^{n_i} JAILR_{hij} \geq 1 \\ 0 & \text{otherwise.} \end{cases}$$

Active indicators

The active reporting unit indicator $JAILA_{hij}$ is set for each individual reporting unit j in jurisdiction i in stratum h on the file, based on the status of the individual reporting unit.

$$JAILA_{hij} = \begin{cases} 1 & \text{if respondent, using prior year data, or nonrespondent} \\ 0 & \text{if closed, or out-of-scope.} \end{cases}$$

The active jurisdiction indicator $JURISA_{hi}$ is set for each jurisdiction i in stratum h on the file, based on the value of $JAILA_{hij}$ for the reporting units within the jurisdiction.

$$JURISA_{hi} = \begin{cases} 1 & \text{if } \sum_{j=1}^{n_i} JAILA_{hij} \geq 1 \\ 0 & \text{otherwise.} \end{cases}$$

Nonresponse weighting adjustment factor

The nonresponse weighting adjustment factor is calculated within each stratum. BJS uses the sample weights in the nonresponse adjustment factor. The nonresponse weighting adjustment factor F_{2h} is calculated as

$$F_{2h} = \frac{\sum_{i=1}^{n_h} W_{hi} \times JURISA_{hi}}{\sum_{i=1}^{n_h} W_{hi} \times JURISR_{hi}}$$

where

n_h = number of jurisdictions in stratum h ,
 w_{hi} = sample weight for jurisdiction i in stratum h .

Final weight

The final weight FW_{hi} for each jail jurisdiction on the 2012 ASJ data file is calculated as

$$FW_{hi} = W_{hi} \times F_{2h} \times JURISR_{hi}$$

where

W_{hi} = sample weight for jurisdiction i in stratum h .

$JURISR_{hi}$ is used to set the final weight to 0 for units that are closed, out-of-scope, or nonrespondents.

Final weight post-stratification: California jail jurisdictions and the Public Safety Realignment

Because of the California Public Safety Realignment, between midyear 2011 and midyear 2012, California jails experienced a significant increase in the number of inmates (about 8,500 inmates) that was not experienced by jails nationwide. Consequently, California jails do not represent other jail jurisdictions nationwide. To ensure that the sampled (both with certainty and non-certainty) California jail jurisdictions represent California jurisdictions only, BJS computed new weights. Without computing new weights, the estimated nationwide jail population would be erroneously inflated.

The post-stratification final weight adjustment is calculated for each stratum from which California jurisdictions were sampled. More specifically for each stratum, two new strata and set of weights are created: one for the California jurisdictions (PS_{CAh}) and one for the non-California jurisdictions ($PS_{\overline{CA}h}$). The weights for those strata from which California jail jurisdictions were not sampled remain unchanged.

The post-stratification adjustment for California jail jurisdictions is computed as

$$PS_{CAh} = \frac{N_{CAh}}{\sum_{i=1}^{n_{CAh}} JURISR_{CAhi}}$$

where

N_{CAh} = number of California jail jurisdictions in stratum h (as determined from the 2005 Census of Jail Inmates),

n_{CAh} = number of sampled California jail jurisdictions in stratum h .

Note that there were a total of 10 California jail jurisdictions that belonged to two strata from which no California jail jurisdictions were sampled. Those 10 jail jurisdictions were moved from their original strata and placed into the most similar stratum from which California jail jurisdictions were sampled.

The post-stratification adjustment for non-California jurisdictions is computed as

$$PS_{\overline{CA}h} = \frac{N_{\overline{CA}h}}{\sum_{i=1}^{n_{\overline{CA}h}} JURISR_{\overline{CA}hi}}$$

where

$N_{\overline{CA}h}$ = number of non-California jurisdictions in stratum h , computed as $N_{\overline{CA}h} = W_h \times \sum_{i=1}^{n_{\overline{CA}h}} JURISA_{\overline{CA}hi}$

$n_{\overline{CA}h}$ = number of sampled non-California jail jurisdictions in stratum h .

Item nonresponse imputation

Average daily population (ADP) and rated capacity

Based on the 2012 ASJ, over 99% of the 867 (including estimates for six nonrespondents) individual reporting units provided valid data on their ADP (860) and rated capacity (862). To calculate a national ADP and rated capacity estimate, data were estimated for the reporting units that did not report specific data.

Estimates were calculated based on the following criteria:

- Data for 7 individual reporting units included ADP data based on estimates from the 2011 Annual Survey of Jails.
- Data for 2 individual reporting units included data based on the design capacity reported in the 2012 Annual Survey of Jails.
- Data for 3 individual reporting units included rated capacity data based on estimates from the 2011 Annual Survey of Jails.

Inmate characteristics

Based on the 2012 ASJ, about 98% of the 867 (including estimates for six nonrespondents) individual reporting units provided valid data on sex and age and race/Hispanic origin. Nearly 91% of respondents provided data on inmate conviction status. To calculate a national rate for inmate characteristics, data were estimated based on the ratio of the reported characteristic population to the total midyear confined population.

Weekly admission and release estimation procedures

Based on the 2012 ASJ, 844 of the 867 (including estimates for six nonrespondents) individual reporting units (97%) provided valid data on weekly admissions or releases. To calculate an overall weekly estimate, data on offender flows through local jails were estimated for the 23 reporting units that did not report specific data on admissions and releases. Release data were estimated for 9 reporting units that reported data on admissions, but not on releases.

Estimates were calculated based on the following criteria:

- Data for 1 individual reporting unit included admission and release data based on estimates from the 2007 ASJ.
- Data for 1 individual reporting unit included admission and release data based on estimates from the 2009 ASJ.
- Data for 5 individual reporting units included admission and release data based on estimates from the 2010 ASJ.
- Data for 16 individual reporting units included admission and release data based on estimates from the 2011 ASJ.
- Release data for 9 individual reporting units were based on admission data reported in 2012.

Calculating annual admissions

The ASJ collects data on weekly admissions. BJS determined that the June admission data from the 2004 Survey of Large Jails (SLJ) were a reliable source to calculate a nationwide annual admission estimate. Although the number of admissions to jails fluctuated throughout the year, the SLJ tracked monthly movements from January 2003 to January 2004 and showed that the June 2003 count (339,500) closely matched the annual average number of admissions (342,956). The number of annual admissions was calculated by multiplying the weekly admissions by 366 days and dividing by 7 days.

Calculating weekly turnover rates

Weekly jail turnover rates were modeled after the Bureau of Labor Statistics' Job Openings and Labor Turnover Survey. Additional information on turnover rates is available at <http://www.bls.gov/jlt/>. Jail turnover rates were calculated by adding admissions and releases, and then dividing by the ADP. The turnover rate takes into account jail admissions and releases and gives an indication of the fluctuation of the jail population.

Jurisdiction size categories

For the 2011 and 2012 reports, BJS categorized jurisdiction sizes, based on the average daily jail population during the 12 months ending midyear 2006 (which was the first year in the current ASJ series). For the 2010 report, comparisons of size categories from midyear 2009 to midyear 2010 were based on the ADP during the 12 months ending midyear 2009. In previous reports (2007 through 2009), the size category comparisons were based on the 12 months ending midyear of the specific collection year. As a result, not all data in previous reports are comparable with data in this report.

Estimating California's midyear jail population

The ASJ is a sample survey, and data are not representative of individual states. Data from about 70% of California's jail jurisdictions are included in the 2006-2012 Annual Survey of Jails. Based on yearend data of California's jail population collected through BJS's Deaths in Custody Reporting Program, 70% of California's jail jurisdictions included in ASJ accounted for about 97.5% of all California's jail population in any given year from 2005 to 2011.

To calculate a midyear jail population, BJS applied the proportion of the latest yearend non-ASJ sample of California's jail population to the midyear inmate population in the ASJ sample for that year.

For example:

ASJ sample of California's jail population at midyear 2012 = 76,667

Proportion of the latest non-ASJ sample of California jail population at yearend 2011 = 2.5868%

$(76,667 * .025868) + (76,667) = 78,650$ estimated midyear jail population

Jail functions

Jails in the ASJ include confinement facilities—usually administered by a local law enforcement agency—that are intended for adults but may hold juveniles before or after adjudication. Facilities include jails and city or county correctional centers; special jail facilities, such as medical or treatment release centers, halfway houses, and work farms; and temporary holding or lockup facilities that are part of the jail's combined function. Inmates sentenced to jail facilities usually have a sentence of 1 year or less.

Within the ASJ, jails—

- receive individuals pending arraignment and hold them awaiting trial, conviction, or sentencing
- re-admit probation, parole, and bail bond violators and absconders
- temporarily detain juveniles pending transfer to juvenile authorities
- hold mentally ill persons pending their movement to appropriate mental health facilities
- hold individuals for the military, for protective custody, for contempt, and for the courts as witnesses
- release convicted inmates to the community upon completion of sentence
- transfer inmates to federal, state, or other authorities
- house inmates for federal, state, or other authorities because of crowding of their facilities
- sometimes operate community-based programs as alternatives to incarceration.

Terms and definitions used in the report

Admissions—Persons are officially booked and housed in jails by formal legal document and the authority of the courts or some other official agency. Jail admissions include persons sentenced to weekend programs and who are booked into the facility for the first time. Excluded from jail admissions are inmates re-entering the facility after an escape, work release, medical appointment or treatment facility appointment, and bail and court appearances. BJS collects jail admissions for the last 7 days in June.

Average daily population—The average is derived by the sum of inmates in jail each day for a year, divided by the number of days in the year (i.e., between July 1, 2011, and June 30, 2012).

Average annual change—The mean average change across a 12-month time period.

Calculating annual admissions—BJS collects the number of jail admissions during the last 7 days in June. Annual jail admissions are calculated by multiplying weekly admissions by the sum of 366 days divided by 7 days.

Calculating weekly jail turnover rate—This rate is calculated by adding admissions and releases and dividing by the average daily population. See *Calculating weekly turnover rates* for additional information.

Inmates confined at midyear—The number of inmates held in custody on the last weekday in June.

Jail incarceration rate—The number of inmates held in the custody of local jails, per 100,000 U.S. residents.

Percent of capacity occupied—This percentage is calculated by taking the number of inmates at midyear, dividing by the rated capacity, and multiplying by 100.

Rated capacity—The number of beds or inmates assigned by a rating official to a facility, excluding separate temporary holding areas.

Releases—Persons released after a period of confinement (e.g., sentence completion, bail or bond releases, other pretrial releases, transfers to other jurisdictions, and deaths). Releases include those persons who have completed their weekend program and who are leaving the facility for the last time. Excluded from jail releases are temporary discharges including work release, medical appointment or treatment center, court appearance, furlough, day reporting, and transfers to other facilities within the jail's jurisdiction.

Under jail supervision but not confined—This classification includes all persons in community-based programs operated by a jail facility. Programs include electronic monitoring, house arrest, community service, day reporting, and work programs. The classification excludes persons on pretrial release and who are not in a community-based program run by the jail, as well as persons under supervision of probation, parole or other agencies, inmates on weekend programs, and inmates who participate in work release programs and return to the jail at night.

Weekend programs—Offenders in these programs are allowed to serve their sentences of confinement only on weekends (i.e., Friday to Sunday).



The Bureau of Justice Statistics is the statistical agency of the U.S. Department of Justice. William J. Sabol is the acting director.

This report was written by Todd D. Minton. Margaret Noonan verified the report.

Jennifer Deppe carried out the data collection and processing with assistance provided by Beth Davis, Lorelle Dennis, and Joshua Giunta, under the supervision of Stephen Simoncini and Heather C. West, Ph.D., Governments Division, Census Bureau, U.S. Department of Commerce. Suzanne Dorinski and Rekha Kudlur provided statistical and technical assistance.

Vanessa Curto and Jill Thomas edited the report, and Tina Dorsey produced the report under the supervision of Doris J. James.

May 2013, NCJ 241264



Office of Justice Programs
Innovation • Partnerships • Safer Neighborhoods
www.ojp.usdoj.gov

**RETURN
TO****U.S. Census Bureau
Governments Division
Washington, DC 20233-6800**FORM **CJ-5**
(3-22-2012)**2012 ANNUAL
SURVEY OF JAILS**U.S. DEPARTMENT OF JUSTICE
BUREAU OF JUSTICE STATISTICS
AND ACTING AS COLLECTION AGENT
U.S. DEPARTMENT OF COMMERCE
ECONOMICS AND STATISTICS ADMINISTRATION
U.S. CENSUS BUREAU**DATA SUPPLIED BY**

Name		Title			
OFFICIAL ADDRESS	Number and street or P.O. box/Route number			City	State ZIP Code
TELEPHONE	Area code	Number	Extension	FAX NUMBER	Area Code Number
E-MAIL ADDRESS					

(Please correct any error in name, mailing address, and ZIP Code)

GENERAL INFORMATION

- If you have any questions, call the **U.S. Census Bureau** at **1-800-253-2078**, or e-mail **govs.asj@census.gov**.
- Please complete the questionnaire before **July 31, 2012** using the web-reporting option (see the web flyer for details), by mailing the completed form to the **U.S. Census Bureau** in the enclosed envelope, or by **FAXing** all pages to **1-888-262-3974**.
- Please retain a copy of the completed form for your records.

What types of facilities are included in this survey?

Confinement facilities usually administered by a local law enforcement agency, intended for adults but sometimes holding juveniles.

- INCLUDE jails and city/county correctional centers.
- INCLUDE special jail facilities (e.g., medical/treatment/release centers, halfway houses, and work farms).
- INCLUDE temporary holding or lockup facilities if they are part of your combined function.
- EXCLUDE temporary holding or lockup facilities that are not part of your combined function from which inmates are usually transferred within 72 hours and not held beyond arraignment. If your only function is a temporary holding or lockup facility, DO NOT complete this form – contact Jennifer Deppe at 1-800-253-2078.
- EXCLUDE facilities reporting to form CJ-5D, which collects data from jail jurisdictions that are selected with certainty to participate in the Annual Survey of Jails.

Burden statement

Under the Paperwork Reduction Act, we cannot ask you to respond to a collection of information unless it displays a currently valid OMB control number. The burden of this collection is estimated to average 1 1/4 hours per response, including reviewing instructions, searching existing data sources, gathering necessary data, and completing and reviewing this form. Send comments regarding this burden estimate or any aspect of this survey, including suggestions for reducing this burden, to the Director, Bureau of Justice Statistics, 810 Seventh Street, NW, Washington, DC 20531. Do not send your completed form to this address.

REPORTING INSTRUCTIONS

- If the answer to a question is "not available" or "unknown," write "DK" in the space provided.
- If the answer to a question is "not applicable," write "NA" in the space provided.
- If the answer to a question is "none" or "zero," write "0" in the space provided.
- When exact numeric answers are not available, provide estimates and mark (X) in the box beside each figure that is estimated. For example 1,234 ☒

Section I — SUPERVISED POPULATION**I.1. On June 29, 2012, how many persons under the supervision of your jail jurisdiction were —****a. CONFINED in your jail facilities?**

- INCLUDE persons on transfer to treatment facilities but who remain under your jurisdiction.
- INCLUDE persons held for other jurisdictions.
- INCLUDE persons in community-based programs (e.g., work release, day release, drug/alcohol treatment) who return to jail at night.
- EXCLUDE any persons housed in facilities operated by two or more jurisdictions or those housed in privately operated jails.
- EXCLUDE inmates on AWOL, escape, or long-term transfer to other jurisdictions.
- EXCLUDE inmates being boarded out to another county or held in another facility not operated by your jail jurisdiction.

 ☐
b. Under jail supervision but NOT CONFINED?

- INCLUDE all persons in community-based programs run by your jails (e.g., electronic monitoring, house arrest, community service, day reporting, and work programs).
- EXCLUDE persons on pretrial release who are not in a community based program run by your jails.
- EXCLUDE persons under supervision of probation, parole or other agencies.
- EXCLUDE inmates on weekend programs. Weekend programs allow offenders to serve their sentences of confinement only on weekends (e.g., Friday–Sunday).
- EXCLUDE inmates participating in work release programs who return to the jail at night.

 ☐
c. Total (Sum of items I.1a and I.1b)
 ☐
I.2. Of all persons under your jail supervision reported in item I.1c, how many were not U.S. citizens?
 Non-US citizens ☐
I.3. On the weekend prior to June 29, 2012, did your jail jurisdiction have a weekend program?

- Weekend programs allow offenders to serve their sentences of confinement only on weekends (e.g., Friday–Sunday).

 1 ☐ Yes – **How many inmates participated?** ☐

 2 ☐ No
Section II — INMATE COUNTS AND MOVEMENTS OF THE CONFINED POPULATION**II.1. On June 29, 2012, how many persons CONFINED in your jail facilities were —**
a. Adult males (age 18 or older) ☐
b. Adult females (age 18 or older) ☐
c. Males under age 18 ☐
d. Females under age 18 ☐
e. TOTAL (Sum of items II.1a to II.1d should equal item I.1a) ☐
II.2. Of all persons under the age of 18 CONFINED in your jail facilities on June 29, 2012 (items II.1c and II.1d), how many were tried, or awaiting trial, in adult court?
 Number of persons under age 18 held as adults ☐

II.3. Of all persons CONFINED in your jail facilities on June 29, 2012, how many were —


- For persons with more than one status, report the status with the most serious offense.
- For convicted inmates include probation and parole violators with no new sentence.

a. Convicted ☐

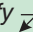
How many were —

1. Unsented inmates or awaiting sentencing . . . ☐2. Sentenced inmates ☐**b. Unconvicted** ☐

How many were —

1. Awaiting trial/arraignment ☐2. Awaiting transfer/hold for other authorities ☐3. Other ☐**c. TOTAL** (Sum of items II.3a and II.3b should equal item I.1a). ☐**II.4. On June 29, 2012, how many persons CONFINED in your jail facilities were —****a. White**, not of Hispanic origin ☐**b. Black or African American**, not of Hispanic origin ☐**c. Hispanic or Latino** ☐**d. American Indian/Alaska Native**, not of Hispanic origin ☐**e. Asian**, not of Hispanic origin ☐**f. Native Hawaiian or Other Pacific Islander**, not of Hispanic origin ☐**g. Two or more races**, not of Hispanic origin ☐**h. Additional categories in your information system — Specify**  ☐**i. Not known** ☐**j. TOTAL** (Sum of items II.4a to II.4i should equal item I.1a) . ☐**II.5. On June 29, 2012, how many persons CONFINED in your jail facilities were held for —**

- For persons with a multiple hold, count them only once with priority being Federal, State, and local.

a. Federal authorities**1. U.S. Marshals Service** . . . ☐**2. Federal Bureau of Prisons** ☐**3. U.S. Immigration and Customs Enforcement (I.C.E.)** ☐**4. Bureau of Indian Affairs** . ☐**5. Other — Specify**  ☐**b. State prison authorities****1. For your state** ☐**2. For other states** ☐**c. Other local jail jurisdictions**

- EXCLUDE inmates being housed for your own jurisdiction (i.e., your own county/city inmates).

1. Within your state ☐**2. Outside your state** ☐**d. TOTAL** (Sum of items II.5a to II.5c) ☐**II.6. a. During the 30-DAY period from June 1 to June 30, 2012, on what day did your facility hold the greatest number of inmates?**

- Peak population should be equal to or greater than the confined inmate population reported in item I.1a.

June , 2012**b. How many persons were CONFINED on that day?**Number that day ☐

II.7. Between July 1, 2011, and June 30, 2012, what was the average daily population of all jail confinement facilities operated by your jurisdiction?

- Include inmates who participated in weekend programs that allow offenders to serve their sentences of confinement only on weekends (e.g., Friday-Sunday).
- To calculate the average daily population, add the number of persons for each day during the period July 1, 2011, through June 30, 2012, and divide the result by 366.

Average daily population ☐**II.8. On June 29, 2012, what was the total jail capacity of your jail facilities?****a. Rated capacity**

(The maximum number of beds or inmates assigned by a rating official to a facility, excluding separate temporary holding areas.)

 ☐**b. Operational capacity**

(The number of inmates that can be accommodated based on staff, existing programs and services in institutions within your jurisdiction. Also known as "budget" capacity.)

 ☐**c. Design capacity**

(The number of inmate's planners or architects intended for all jail facilities in your jurisdiction.)

 ☐**II.9. During the WEEK of June 24 to June 30, 2012, how many persons were —****a. New admissions to your jail facilities?**

- INCLUDE persons officially booked into and housed in your facility by formal legal document and by the authority of the courts or some other official agency.
- INCLUDE those persons serving a weekend sentence coming into the facility for the first time.
- EXCLUDE returns from escape, work release, medical appointments/treatment facilities, bail and court appearances.

New admissions ☐**b. Final discharges from your jail facilities?**

- INCLUDE all persons released after a period of confinement (e.g., sentence completion, bail/bond releases, other pretrial releases, transfers to other jurisdictions, and deaths).
- INCLUDE those persons completing their weekend sentence leaving the facility for the last time.
- EXCLUDE temporary discharges (e.g., work releases, medical appointments/treatment, to courts, furloughs, day reporters, and transfers to other facilities within your jurisdiction).

Final discharges ☐**Section III — POPULATION SUPERVISED IN THE COMMUNITY****If item I.1b equals 0 (zero), STOP HERE.****III.1. On June 29, 2012, how many persons under your jail supervision who were NOT CONFINED, participated in —**

- EXCLUDE inmates on weekend programs.

a. Electronic monitoring . . . ☐**b. Home detention without electronic monitoring** . . . ☐**c. Community service** ☐**d. Day reporting** ☐**e. Other pretrial supervision** ☐**f. Other alternative work programs** ☐

- EXCLUDE inmates participating in work release programs who return to the jail at night.

g. Alcohol/drug treatment programs ☐

- EXCLUDE inmates participating in alcohol/drug treatment programs who are confined in the jail.

h. Other programs outside of jail facilities — Specify ☐**i. TOTAL** (Sum of items III.1a to III.1h should equal item I.1b) . . ☐**III.2. On June 29, 2012, how many persons under your jail supervision who were NOT CONFINED were —****a. Adult males** (age 18 or older) ☐**b. Adult females** (age 18 or older) ☐**c. Males under age 18** ☐**d. Females under age 18** ☐**e. TOTAL** (Sum of items III.2a to III.2d should equal item I.1b) . . ☐**III.3. Of all persons under your jail supervision who were NOT CONFINED on June 29, 2012, how many were —****a. Convicted** ☐**b. Unconvicted** ☐**c. TOTAL** (Sum of items III.3a and III.3b should equal item I.1b) . . ☐

**RETURN
TO****U.S. Census Bureau
Governments Division
Washington, DC 20233-6800**FORM **CJ-5A**
(3-21-2012)**2012 ANNUAL
SURVEY OF JAILS
PRIVATE FACILITY**U.S. DEPARTMENT OF JUSTICE
BUREAU OF JUSTICE STATISTICS
AND ACTING AS COLLECTION AGENT
U.S. DEPARTMENT OF COMMERCE
ECONOMICS AND STATISTICS ADMINISTRATION
U.S. CENSUS BUREAU**DATA SUPPLIED BY**

Name			Title		
OFFICIAL ADDRESS	Number and street or P.O. box/Route number			City	State ZIP Code
TELEPHONE	Area Code	Number	Extension	FAX NUMBER	Area Code Number
E-MAIL ADDRESS					

(Please correct any error in name, mailing address, and ZIP Code)

GENERAL INFORMATION

- If you have any questions, call the **U.S. Census Bureau** at **1-800-253-2078**, or e-mail **govs.asj@census.gov**.
- Please complete the questionnaire before **July 31, 2012** using the web-reporting option (see the web flyer for details), by mailing the completed form to the **U.S. Census Bureau** in the enclosed envelope, or by **FAXing** all pages to **1-888-262-3974**.
- Please retain a copy of the completed form for your records.

What types of facilities are included in this survey?

Privately owned or operated confinement facilities including detention centers, jails, and other correctional facilities, intended for adults but sometimes holding juveniles.

- INCLUDE temporary holding or lockup facilities if they are part of your combined function.
- EXCLUDE temporary holding or lockup facilities that are not part of your combined function from which inmates are usually transferred within 72 hours and not held beyond arraignment. If your only function is a temporary holding or lockup facility, DO NOT complete this form – contact Jennifer Deppe at 1-800-253-2078.
- EXCLUDE private facilities reporting to form CJ-5DA, which collects data from facilities in jail jurisdictions that are selected with certainty to participate in the Annual Survey of Jails.

Burden statement

Under the Paperwork Reduction Act, we cannot ask you to respond to a collection of information unless it displays a currently valid OMB control number. The burden of this collection is estimated to average 1 1/4 hours per response, including reviewing instructions, searching existing data sources, gathering necessary data, and completing and reviewing this form. Send comments regarding this burden estimate or any aspect of this survey, including suggestions for reducing this burden, to the Director, Bureau of Justice Statistics, 810 Seventh Street, NW, Washington, DC 20531. Do not send your completed form to this address.

REPORTING INSTRUCTIONS

- If the answer to a question is "not available" or "unknown," write "DK" in the space provided.
- If the answer to a question is "not applicable," write "NA" in the space provided.
- If the answer to a question is "none" or "zero," write "0" in the space provided.

- When exact numeric answers are not available, provide estimates and mark (X) in the box beside each figure that is estimated. For example 1,234 ☒

Section I — SUPERVISED POPULATION**I.1. On June 29, 2012, how many persons under the supervision of your jail were —****a. CONFINED in your jail facility?**

- INCLUDE persons on transfer to treatment facilities but who remain under your jurisdiction.
- INCLUDE persons held for jurisdictions other than the participating jurisdictions.
- INCLUDE persons in community-based programs (e.g., work release, day release, drug/alcohol treatment) who return to jail at night.
- EXCLUDE inmates on AWOL, escape, or long-term transfer to other jurisdictions.
- EXCLUDE inmates being boarded out to another county or held in another facility not operated by your jail jurisdiction.

 ☐
b. Under jail supervision but NOT CONFINED?

- INCLUDE all persons in community-based programs run by your jail (e.g., electronic monitoring, house arrest, community service, day reporting, and work programs).
- EXCLUDE persons on pretrial release who are not in a community based program run by your jail.
- EXCLUDE persons under supervision of probation, parole or other agencies.
- EXCLUDE inmates on weekend programs. Weekend programs allow offenders to serve their sentences of confinement only on weekends (e.g., Friday — Sunday).
- EXCLUDE inmates participating in work release programs who return to the jail at night.

 ☐
c. TOTAL (Sum of items I.1a and I.1b)
 ☐
I.2. Of all persons under your jail supervision reported in item I.1c, how many were not U.S. citizens?
 Non-US citizens ☐
I.3. On the weekend prior to June 29, 2012, did your jail facility have a weekend program?

- Weekend programs allow offenders to serve their sentences of confinement only on weekends (e.g., Friday — Sunday).

 1 ☐ Yes — **How many inmates participated?** ☐

 2 ☐ No
Section II — INMATE COUNTS AND MOVEMENTS OF THE CONFINED POPULATION**II.1. On June 29, 2012, how many persons CONFINED in your jail facility were —**
a. Adult males (age 18 or older) ☐
b. Adult females (age 18 or older) ☐
c. Males under age 18 ☐
d. Females under age 18 ☐
e. TOTAL (Sum of items II.1a to II.1d should equal item I.1a) . . . ☐
II.2. Of all persons under the age of 18 CONFINED in your jail facility on June 29, 2012 (items II.1c and II.1d), how many were tried, or awaiting trial, in adult court?
 Number of persons under age 18 held as adults. ☐

II.3. Of all persons CONFINED in your jail facility on June 29, 2012, how many were —

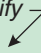
- For persons with more than one status, report the status with the most serious offense.
- For convicted inmates include probation and parole violators with no new sentence.

a. Convicted ☐

How many were —

1. Unsented inmates or awaiting sentencing . . . ☐2. Sentenced inmates ☐**b. Unconvicted** ☐

How many were —

1. Awaiting trial/arraignment ☐2. Awaiting transfer/hold for other authorities ☐3. Other ☐**c. TOTAL** (Sum of items II.3a and II.3b should equal item I.1a) ☐**II.4. On June 29, 2012, how many persons CONFINED in your jail facility were —****a. White**, not of Hispanic origin ☐**b. Black or African American**, not of Hispanic origin ☐**c. Hispanic or Latino** ☐**d. American Indian/Alaska Native**, not of Hispanic origin ☐**e. Asian**, not of Hispanic origin . ☐**f. Native Hawaiian or Other Pacific Islander**, not of Hispanic origin ☐**g. Two or more races**, not of Hispanic origin ☐**h. Additional categories in your information system — Specify**  ☐**i. Not known** ☐**j. TOTAL** (Sum of items II.4a to II.4i should equal item I.1a) . ☐**II.5. On June 29, 2012, how many persons CONFINED in your jail facility were held for —**

- For persons with a multiple hold, count them only once with priority being Federal, State, and local.

a. Federal authorities**1. U.S. Marshals Service** . . . ☐**2. Federal Bureau of Prisons** ☐**3. U.S. Immigration and Customs Enforcement (I.C.E.)** ☐**4. Bureau of Indian Affairs** . ☐**5. Other — Specify**  ☐**b. State prison authorities****1. For your state** ☐**2. For other states** ☐**c. Other local jail jurisdictions**

- EXCLUDE inmates being housed for your own jurisdiction (i.e., your own county/city inmates).

1. Within your state ☐**2. Outside your state** ☐**d. TOTAL** (Sum of items II.5a to II.5c) ☐**II.6. a. During the 30-DAY period from June 1 to June 30, 2012, on what day did your facility hold the greatest number of inmates?**

- Peak population should be equal to or greater than the confined inmate population reported in item I.1a.

June , 2012**b. How many persons were CONFINED on that day?**Number that day ☐

II.7. Between July 1, 2011, and June 30, 2012, what was the average daily population CONFINED in your jail facility?

- Include inmates who participated in weekend programs that allow offenders to serve their sentences of confinement only on weekends (e.g., Friday-Sunday).
- To calculate the average daily population, add the number of persons for each day during the period July 1, 2011, through June 30, 2012, and divide the result by 366.

Average daily population ☐**II.8. On June 29, 2012, what was the total jail capacity of your jail facility?****a. Rated capacity**

(The maximum number of beds or inmates assigned by a rating official to a facility, excluding separate temporary holding areas.)

 ☐**b. Operational capacity**

(The number of inmates that can be accommodated based on staff, existing programs and services in your jail facility. Also known as "budget" capacity.)

 ☐**c. Design capacity**

(The number of inmate's planners or architects intended for your jail facility in your jurisdiction.)

 ☐**II.9. During the WEEK of June 24 to June 30, 2012, how many persons were —****a. New admissions to your jail facility?**

- INCLUDE persons officially booked into and housed in your facility by formal legal document and by the authority of the courts or some other official agency.
- INCLUDE those persons serving a weekend sentence coming into the facility for the first time.
- EXCLUDE returns from escape, work release, medical appointments/treatment facilities, bail and court appearances.

New admissions ☐**b. Final discharges from your jail facility?**

- INCLUDE all persons released after a period of confinement (e.g., sentence completion, bail/bond releases, other pretrial releases, transfers to other jurisdictions, and deaths).
- INCLUDE those persons completing their weekend sentence leaving the facility for the last time.
- EXCLUDE temporary discharges (e.g., work releases, medical appointments/treatment, to courts, furloughs, day reporters, and transfers to other facilities within your jurisdiction).

Final discharges ☐**Section III — POPULATION SUPERVISED IN THE COMMUNITY****If item I.1b equals 0 (zero), STOP HERE.****III.1. On June 29, 2012, how many persons under your jail supervision who were NOT CONFINED, participated in —**

- EXCLUDE inmates on weekend programs.

a. Electronic monitoring.. . . . ☐**b. Home detention without electronic monitoring.. . . .** ☐**c. Community service.. . . .** ☐**d. Day reporting.** ☐**e. Other pretrial supervision.** ☐**f. Other alternative work programs.. . . .** ☐

- EXCLUDE inmates participating in work release programs who return to the jail at night.

g. Alcohol/drug treatment programs.. . . . ☐

- EXCLUDE inmates participating in alcohol/drug treatment programs who are confined in the jail.

h. Other programs outside of jail facility — Specify \nearrow
 ☐**i. TOTAL (Sum of items III.1a to III.1h should equal item I.1b.).** ☐**III.2. On June 29, 2012, how many persons under your jail supervision who were NOT CONFINED were —****a. Adult males (age 18 or older).** ☐**b. Adult females (age 18 or older)** ☐**c. Males under age 18.** ☐**d. Females under age 18.** ☐**e. TOTAL (Sum of items III.2a to III.2d should equal item I.1b)** ☐**III.3. Of all persons under your jail supervision who were NOT CONFINED on June 29, 2012, how many were —****a. Convicted.** ☐**b. Unconvicted.** ☐**c. TOTAL (Sum of items III.3a and III.3b should equal item I.1b).** ☐

**RETURN
TO****U.S. Census Bureau
Governments Division
Washington, DC 20233-6800**FORM **CJ-5D**
(3-21-2012)**2012 ANNUAL
SURVEY OF JAILS**U.S. DEPARTMENT OF JUSTICE
BUREAU OF JUSTICE STATISTICS
AND ACTING AS COLLECTION AGENT
U.S. DEPARTMENT OF COMMERCE
ECONOMICS AND STATISTICS ADMINISTRATION
U.S. CENSUS BUREAU**DATA SUPPLIED BY**

Name		Title			
OFFICIAL ADDRESS	Number and street or P.O. box/Route number			City	State ZIP Code
TELEPHONE	Area code	Number	Extension	FAX NUMBER	Area Code Number
E-MAIL ADDRESS					

(Please correct any error in name, mailing address, and ZIP Code)

GENERAL INFORMATION

- If you have any questions, call the **U.S. Census Bureau** at **1-800-253-2078**, or e-mail **govs.asj@census.gov**.
- Please complete the questionnaire before **July 31, 2012** using the web-reporting option (see the web flyer for details), by mailing the completed form to the **U.S. Census Bureau** in the enclosed envelope, or by **FAXING** all pages to **1-888-262-3974**.
- Please retain a copy of the completed form for your records.

What types of facilities are included in this survey?

Confinement facilities in jurisdictions included with certainty in the Annual Survey of Jails. Confinement facilities are usually administered by a local law enforcement agency, intended for adults but sometimes holding juveniles.

Confinement facilities

- INCLUDE jails and city/county correctional centers.
- INCLUDE special jail facilities (e.g., medical/treatment/release centers, halfway houses, and work farms).
- INCLUDE temporary holding or lockup facilities if they are part of your combined function.
- EXCLUDE temporary holding or lockup facilities that are not part of your combined function from which inmates are usually transferred within 72 hours and not held beyond arraignment. If your only function is a temporary holding or lockup facility, DO NOT complete this form – contact Jennifer Deppe at 1-800-253-2078.

Certainty jurisdictions

- INCLUDE facilities in jail jurisdictions that held juvenile inmates at the time of the 2005 Census of Jail Inmates and had an average daily population of 500 or more inmates during the 12 months ending June 30, 2005.
- INCLUDE facilities in jail jurisdictions that held only adult inmates and had an average daily population of 750 or more at the time of the 2005 Census of Jail Inmates.

Burden statement

Under the Paperwork Reduction Act, we cannot ask you to respond to a collection of information unless it displays a currently valid OMB control number. The burden of this collection is estimated to average 2 hours per response, including reviewing instructions, searching existing data sources, gathering necessary data, and completing and reviewing this form. Send comments regarding this burden estimate or any aspect of this survey, including suggestions for reducing this burden, to the Director, Bureau of Justice Statistics, 810 Seventh Street, NW, Washington, DC 20531. Do not send your completed form to this address.

REPORTING INSTRUCTIONS

- If the answer to a question is "not available" or "unknown," write "DK" in the space provided.
- If the answer to a question is "not applicable," write "NA" in the space provided.
- If the answer to a question is "none" or "zero," write "0" in the space provided.
- When exact numeric answers are not available, provide estimates and mark (X) in the box beside each figure that is estimated. For example 1,234 ☒

Section I — SUPERVISED POPULATION**I.1. On June 29, 2012, how many persons under the supervision of your jail jurisdiction were —****a. CONFINED in your jail facilities?**

- INCLUDE persons on transfer to treatment facilities but who remain under your jurisdiction.
- INCLUDE persons held for other jurisdictions.
- INCLUDE persons in community-based programs (e.g., work release, day release, drug/alcohol treatment) who return to jail at night.
- EXCLUDE any persons housed in facilities operated by two or more jurisdictions or those housed in privately operated jails.
- EXCLUDE inmates on AWOL, escape, or long-term transfer to other jurisdictions.
- EXCLUDE inmates being boarded out to another county or held in another facility not operated by your jail jurisdiction.

 ☐
b. Under jail supervision but NOT CONFINED?

- INCLUDE all persons in community-based programs run by your jails (e.g., electronic monitoring, house arrest, community service, day reporting, and work programs).
- EXCLUDE persons on pretrial release who are not in a community based program run by your jails.
- EXCLUDE persons under supervision of probation, parole or other agencies.
- EXCLUDE inmates on weekend programs. Weekend programs allow offenders to serve their sentences of confinement only on weekends (e.g., Friday–Sunday).
- EXCLUDE inmates participating in work release programs who return to the jail at night.

 ☐
c. Total (Sum of itemsI.1a and I.1b). ☐**I.2. Of all persons under your jail supervision reported in item I.1c, how many were not U.S. citizens?**Non-US citizens ☐**I.3. On the weekend prior to June 29, 2012, did your jail jurisdiction have a weekend program?**

- Weekend programs allow offenders to serve their sentences of confinement only on weekends (e.g., Friday–Sunday).

1 ☐ Yes – **How many inmates participated?** ☐2 ☐ No**Section II — INMATE COUNTS AND MOVEMENTS OF THE CONFINED POPULATION****II.1. On June 29, 2012, how many persons CONFINED in your jail facilities were —****a. Adult males** (age 18 or older) ☐**b. Adult females** (age 18 or older) ☐**c. Males under age 18** ☐**d. Females under age 18** ☐**e. TOTAL** (Sum of items II.1a to II.1d should equal item I.1a) . . . ☐**II.2. Of all persons under the age of 18 CONFINED in your jail facilities on June 29, 2012 (items II.1c and II.1d), how many were tried, or awaiting trial, in adult court?**Number of persons under age 18 held as adults ☐

II.3. Of all persons CONFINED in your jail facilities on June 29, 2012, how many were —

- For persons with more than one status, report the status with the most serious offense.
- For convicted inmates include probation and parole violators with no new sentence.

a. Convicted ☐

How many were —

1. Unsented inmates or awaiting sentencing . . . ☐2. Sentenced inmates ☐**b. Unconvicted** ☐

How many were —

1. Awaiting trial/arraignment ☐2. Awaiting transfer/hold for other authorities ☐3. Other ☐**c. TOTAL** (Sum of items II.3a and II.3b should equal item I.1a) ☐**II.4. On June 29, 2012, how many persons CONFINED in your jail facilities were —****a. White**, not of Hispanic origin ☐**b. Black or African American**, not of Hispanic origin ☐**c. Hispanic or Latino** ☐**d. American Indian/Alaska Native**, not of Hispanic origin ☐**e. Asian**, not of Hispanic origin . ☐**f. Native Hawaiian or Other Pacific Islander**, not of Hispanic origin ☐**g. Two or more races**, not of Hispanic origin ☐**h. Additional categories in your information system — Specify**
 ☐**i. Not known** ☐**j. TOTAL** (Sum of items II.4a to II.4i should equal item I.1a) . ☐**II.5. On June 29, 2012, how many persons CONFINED in your jail facilities were held for —**

- For persons with a multiple hold, count them only once with priority being Federal, State, and local.

a. Federal authorities**1. U.S. Marshals Service** . . . ☐**2. Federal Bureau of Prisons** ☐**3. U.S. Immigration and Customs Enforcement (I.C.E.)** ☐**4. Bureau of Indian Affairs** . ☐**5. Other — Specify**
 ☐**b. State prison authorities****1. For your state** ☐**2. For other states** ☐**c. Other local jail jurisdictions**

- EXCLUDE inmates being housed for your own jurisdiction (i.e., your own county/city inmates).

1. Within your state ☐**2. Outside your state** ☐**d. TOTAL** (Sum of items II.5a to II.5c) ☐**II.6. a. During the 30-DAY period from June 1 to June 30, 2012, on what day did your facility hold the greatest number of inmates?**

- Peak population should be equal to or greater than the confined inmate population reported in item I.1a.

June , 2012**b. How many persons were CONFINED on that day?**Number that day ☐

II.7. Between July 1, 2011, and June 30, 2012, what was the average daily population of all jail confinement facilities operated by your jurisdiction?

- Include inmates who participated in weekend programs that allow offenders to serve their sentences of confinement only on weekends (e.g., Friday-Sunday).
- To calculate the average daily population, add the number of persons for each day during the period July 1, 2011, through June 30, 2012, and divide the result by 366.

Average daily population **II.8. On June 29, 2012, what was the total jail capacity of your jail facilities?****a. Rated capacity**

(The maximum number of beds or inmates assigned by a rating official to a facility, excluding separate temporary holding areas.)

b. Operational capacity

(The number of inmates that can be accommodated based on staff, existing programs and services in institutions within your jurisdiction. Also known as "budget" capacity.)

c. Design capacity

(The number of inmate's planners or architects intended for all jail facilities in your jurisdiction.)

II.9. During the WEEK of June 24 to June 30, 2012, how many persons were —**a. New admissions to your jail facilities?**

- INCLUDE persons officially booked into and housed in your facility by formal legal document and by the authority of the courts or some other official agency.
- INCLUDE those persons serving a weekend sentence coming into the facility for the first time.
- EXCLUDE returns from escape, work release, medical appointments/treatment facilities, bail and court appearances.

New admissions **b. Final discharges from your jail facilities?**

- INCLUDE all persons released after a period of confinement (e.g., sentence completion, bail/bond releases, other pretrial releases, transfers to other jurisdictions, and deaths).
- INCLUDE those persons completing their weekend sentence leaving the facility for the last time.
- EXCLUDE temporary discharges (e.g., work releases, medical appointments/treatment, to courts, furloughs, day reporters, and transfers to other facilities within your jurisdiction).

Final discharges **II.10. During the WEEK of June 24 to June 30, 2012, how many persons discharged from your jail jurisdiction were confined —**

- Report time served, not sentence length, for discharged person.

	Convicted	Unconvicted
a. Less than 1 day . . .	<input type="text"/>	<input type="text"/>
b. 1 to 2 days	<input type="text"/>	<input type="text"/>
c. 3 to 7 days	<input type="text"/>	<input type="text"/>
d. 8 to 30 days	<input type="text"/>	<input type="text"/>
e. 31 to 180 days . . .	<input type="text"/>	<input type="text"/>
f. More than 180 days	<input type="text"/>	<input type="text"/>
g. TOTAL (Sum of items II.10a to II.10f should equal item II.9b)	<input type="text"/>	<input type="text"/>

Section III — POPULATION SUPERVISED IN THE COMMUNITY**If item I.1b equals 0 (zero), SKIP to item IV.1****III.1. On June 29, 2012, how many persons under your jail supervision who were NOT CONFINED, participated in —**

- EXCLUDE inmates on weekend programs.

- a. Electronic monitoring . . .
- b. Home detention without electronic monitoring . . .
- c. Community service
- d. Day reporting
- e. Other pretrial supervision
- f. Other alternative work programs
- EXCLUDE inmates participating in work release programs who return to the jail at night.
- g. Alcohol/drug treatment programs
- EXCLUDE inmates participating in alcohol/drug treatment programs who are confined in the jail.
- h. Other programs outside of jail facilities - Specify
- i. TOTAL (Sum of items III.1a to III.1h should equal item I.1b) .

III.2. On June 29, 2012, how many persons under your jail supervision who were NOT CONFINED were —

- a. Adult males** (age 18 or older) ☐
- b. Adult females** (age 18 or older) ☐
- c. Males under age 18** ☐
- d. Females under age 18** ☐
- e. TOTAL** (Sum of items III.2a to III.2d should equal item I.1b) ☐

III.3. Of all persons under your jail supervision who were NOT CONFINED on June 29, 2012, how many were —

- a. Convicted** ☐
- b. Unconvicted** ☐
- c. TOTAL** (Sum of items III.3a and III.3b should equal item I.1b) ☐

Section IV — STAFF SAFETY AND SECURITY**IV.1. On June 29, 2012, how many staff employed by your jail jurisdiction were —**

- Count each employee only once. Classify employees with multiple functions by the function performed most frequently.
- INCLUDE only payroll and nonpayroll staff.
- EXCLUDE staff paid through contractual agreements and community volunteers.

- a. Correctional Officers**
(Deputies, monitors, and other custody staff who spend more than 50% of their time with the incarcerated population.) ☐
- b. All other staff**
(Administrators, clerical and maintenance staff, educational staff, professional and technical staff, and other staff unspecified.) ☐
- c. Total** (sum of items IV.1a and IV.1b) ☐

IV.2. During the 366-DAY period from July 1, 2011 to June 30, 2012, were there any inmate-inflicted physical or sexual assaults on facility staff in your jail jurisdiction?

- Report any assaults that involved a weapon or serious injury requiring immediate medical attention more extensive than first aid.

1 ☐ Yes —

Number of assaults on —

- a. Correctional Officers ☐
- b. All other staff ☐

2 ☐ No assaults**IV.3. During the 366-DAY period from July 1, 2011 to June 30, 2012, were there any staff deaths as a result of assaults by inmates?**1 ☐ Yes —

Number of deaths —

- a. Correctional Officer deaths inflicted by inmates ☐
- b. All other staff deaths inflicted by inmates ☐

2 ☐ No deaths**IV.4. During the 366-DAY period from July 1, 2011 to June 30, 2012, how many persons CONFINED in your jail jurisdiction were written up or found guilty of —**

- a. Physical assault on another inmate** ☐
- b. A drug violation, such as use, possession, or dealing drugs** ☐
- c. An alcohol violation, including unauthorized possession, use, or sale** ☐
- d. Possession of a weapon** ☐
- e. Possession of stolen property** ☐
- f. Escape or attempted escape** ☐
- g. Any other major violation, including work slowdowns, food strikes, setting fire, rioting, etc.** ☐

RETURN TO	U.S. Census Bureau Governments Division Washington, DC 20233-6800		FORM CJ-5DA (3-21-2012)		2012 ANNUAL SURVEY OF JAILS MULTI-JURISDICTION OR PRIVATE FACILITY		U.S. DEPARTMENT OF JUSTICE BUREAU OF JUSTICE STATISTICS AND ACTING AS COLLECTION AGENT U.S. DEPARTMENT OF COMMERCE ECONOMICS AND STATISTICS ADMINISTRATION U.S. CENSUS BUREAU	
	DATA SUPPLIED BY							
Name				Title				
OFFICIAL ADDRESS	Number and street or P.O. box/Route number			City		State		ZIP Code
TELEPHONE	Area Code	Number	Extension	FAX NUMBER	Area Code	Number		
E-MAIL ADDRESS								

(Please correct any error in name, mailing address, and ZIP Code)

GENERAL INFORMATION

- If you have any questions, call the **U.S. Census Bureau** at **1-800-253-2078**, or e-mail **govs.asj@census.gov**.
- Please complete the questionnaire before **July 31, 2012** using the web-reporting option (see the web flyer for details), by mailing the completed form to the **U.S. Census Bureau** in the enclosed envelope, or by **FAXing** all pages to **1-888-262-3974**.
- Please retain a copy of the completed form for your records.

What types of facilities are included in this survey?

Multi-Jurisdiction facilities and privately operated facilities in jurisdictions included with certainty in the Annual Survey of Jails. These facilities are intended for adults but sometimes hold juveniles.

For Multi-Jurisdiction facility

Confinement facilities including detention centers, jails, and other correctional facilities administered by two or more governments (or a board composed of representatives from two or more governments) included with certainty in the Annual Survey of Jails.

- INCLUDE regional jails or city/county correctional centers.
- INCLUDE special jail facilities (e.g., medical/treatment/release centers, halfway houses, and work farms).
- INCLUDE inmates held for jurisdictions, other than the participating jurisdictions.

For Privately Operated facility

Privately owned or operated confinement facilities in jurisdictions included with certainty in the Annual Survey of Jails, including detention centers, jails, and other correctional facilities.

- INCLUDE temporary holding or lockup facilities if they are part of your combined function.
- EXCLUDE temporary holding or lockup facilities that are not part of your combined function from which inmates are usually transferred within 72 hours and not held beyond arraignment. If your only function is a temporary holding or lockup facility, DO NOT complete this form – contact Jennifer Deppe at 1-800-253-2078.

Certainty facilities

- INCLUDE private facilities in jail jurisdictions that held juvenile inmates at the time of the 2005 Census of Jail Inmates and had an average daily population of 500 or more inmates during the 12 months ending June 30, 2005.
- INCLUDE private facilities in jail jurisdictions that held only adult inmates and had an average daily population of 750 or more at the time of the 2005 Census of Jail Inmates.

Burden statement

Under the Paperwork Reduction Act, we cannot ask you to respond to a collection of information unless it displays a currently valid OMB control number. The burden of this collection is estimated to average 2 hours per response, including reviewing instructions, searching existing data sources, gathering necessary data, and completing and reviewing this form. Send comments regarding this burden estimate or any aspect of this survey, including suggestions for reducing this burden, to the Director, Bureau of Justice Statistics, 810 Seventh Street, NW, Washington, DC 20531. Do not send your completed form to this address.

REPORTING INSTRUCTIONS

- If the answer to a question is "not available" or "unknown," write "DK" in the space provided.
- If the answer to a question is "not applicable," write "NA" in the space provided.
- If the answer to a question is "none" or "zero," write "0" in the space provided.

- When exact numeric answers are not available, provide estimates and mark (X) in the box beside each figure that is estimated. For example 1,234 ☒

Section I — SUPERVISED POPULATION**I.1. On June 29, 2012, how many persons under the supervision of your jail were —****a. CONFINED in your jail facility?**

- INCLUDE persons on transfer to treatment facilities but who remain under your jurisdiction.
- INCLUDE persons held for jurisdictions other than the participating jurisdictions.
- INCLUDE persons in community-based programs (e.g., work release, day release, drug/alcohol treatment) who return to jail at night.
- EXCLUDE inmates on AWOL, escape, or long-term transfer to other jurisdictions.
- EXCLUDE inmates being boarded out to another county or held in another facility not operated by your jail jurisdiction.

 ☐
b. Under jail supervision but NOT CONFINED?

- INCLUDE all persons in community-based programs run by your jail (e.g., electronic monitoring, house arrest, community service, day reporting, and work programs).
- EXCLUDE persons on pretrial release who are not in a community based program run by your jail.
- EXCLUDE persons under supervision of probation, parole or other agencies.
- EXCLUDE inmates on weekend programs. Weekend programs allow offenders to serve their sentences of confinement only on weekends (e.g., Friday — Sunday).
- EXCLUDE inmates participating in work release programs who return to the jail at night.

 ☐
c. TOTAL (Sum of items I.1a and I.1b).
 ☐
I.2. Of all persons under your jail supervision reported in item I.1c, how many were not U.S. citizens?
 Non-US citizens ☐
I.3. On the weekend prior to June 29, 2012, did your jail facility have a weekend program?

- Weekend programs allow offenders to serve their sentences of confinement only on weekends (e.g., Friday — Sunday).

 1 ☐ Yes — **How many inmates participated?** ☐

 2 ☐ No
Section II — INMATE COUNTS AND MOVEMENTS OF THE CONFINED POPULATION**II.1. On June 29, 2012, how many persons CONFINED in your jail facility were —**
a. Adult males (age 18 or older) ☐
b. Adult females (age 18 or older) ☐
c. Males under age 18. ☐
d. Females under age 18. ☐
e. TOTAL (Sum of items II.1a to II.1d should equal item I.1a). ☐
II.2. Of all persons under the age of 18 CONFINED in your jail facility on June 29, 2012 (items II.1c and II.1d), how many were tried, or awaiting trial, in adult court?
 Number of persons under age 18 held as adults. ☐

II.3. Of all persons CONFINED in your jail facility on June 29, 2012, how many were —


- For persons with more than one status, report the status with the most serious offense.
- For convicted inmates include probation and parole violators with no new sentence.

a. Convicted ☐

How many were —

1. Unsented inmates or awaiting sentencing . . . ☐2. Sentenced inmates ☐**b. Unconvicted** ☐

How many were —

1. Awaiting trial/arraignment ☐2. Awaiting transfer/hold for other authorities ☐3. Other ☐**c. TOTAL** (Sum of items II.3a and II.3b should equal item I.1a) ☐**II.4. On June 29, 2012, how many persons CONFINED in your jail facility were —****a. White**, not of Hispanic origin ☐**b. Black or African American**, not of Hispanic origin ☐**c. Hispanic or Latino** ☐**d. American Indian/Alaska Native**, not of Hispanic origin ☐**e. Asian**, not of Hispanic origin . ☐**f. Native Hawaiian or Other Pacific Islander**, not of Hispanic origin ☐**g. Two or more races**, not of Hispanic origin ☐**h. Additional categories in your information system — Specify**  ☐**i. Not known** ☐**j. TOTAL** (Sum of items II.4a to II.4i should equal item I.1a) . ☐**II.5. On June 29, 2012, how many persons CONFINED in your jail facility were held for —**

- For persons with a multiple hold, count them only once with priority being Federal, State, and local.

a. Federal authorities**1. U.S. Marshals Service** . . . ☐**2. Federal Bureau of Prisons** ☐**3. U.S. Immigration and Customs Enforcement (I.C.E.)** ☐**4. Bureau of Indian Affairs** . ☐**5. Other — Specify**  ☐**b. State prison authorities****1. For your state** ☐**2. For other states** ☐**c. Other local jail jurisdictions**

- EXCLUDE inmates being housed for your own jurisdiction (i.e., your own county/city inmates).

1. Within your state ☐**2. Outside your state** ☐**d. TOTAL** (Sum of items II.5a to II.5c) ☐**II.6. a. During the 30-DAY period from June 1 to June 30, 2012, on what day did your facility hold the greatest number of inmates?**

- Peak population should be equal to or greater than the confined inmate population reported in item I.1a.

June , 2012**b. How many persons were CONFINED on that day?**Number that day ☐

II.7. Between July 1, 2011, and June 30, 2012, what was the average daily population confined in your facility?

- Include inmates who participated in weekend programs that allow offenders to serve their sentences of confinement only on weekends (e.g., Friday-Sunday).
- To calculate the average daily population, add the number of persons for each day during the period July 1, 2011, through June 30, 2012, and divide the result by 366.

Average daily population **II.8. On June 29, 2012, what was the total jail capacity of your jail facility?****a. Rated capacity**

(The maximum number of beds or inmates assigned by a rating official to a facility, excluding separate temporary holding areas.)

b. Operational capacity

(The number of inmates that can be accommodated based on staff, existing programs and services in institutions within your jurisdiction. Also known as "budget" capacity.)

c. Design capacity

(The number of inmate's planners or architects intended for all jail facilities in your jurisdiction.)

II.9. During the WEEK of June 24 to June 30, 2012, how many persons were —**a. New admissions to your jail facility?**

- INCLUDE persons officially booked into and housed in your facility by formal legal document and by the authority of the courts or some other official agency.
- INCLUDE those persons serving a weekend sentence coming into the facility for the first time.
- EXCLUDE returns from escape, work release, medical appointments/treatment facilities, bail and court appearances.

New admissions **b. Final discharges from your jail facility?**

- INCLUDE all persons released after a period of confinement (e.g., sentence completion, bail/bond releases, other pretrial releases, transfers to other jurisdictions, and deaths).
- INCLUDE those persons completing their weekend sentence leaving the facility for the last time.
- EXCLUDE temporary discharges (e.g., work releases, medical appointments/treatment, to courts, furloughs, day reporters, and transfers to other facilities within your jurisdiction).

Final discharges **II.10. During the WEEK of June 24 to June 30, 2012, how many persons discharged from your jail facility were confined —**

- Report time served, not sentence length, for discharged person.

	Convicted	Unconvicted
a. Less than 1 day.	<input type="text"/>	<input type="text"/>
b. 1 to 2 days.	<input type="text"/>	<input type="text"/>
c. 3 to 7 days.	<input type="text"/>	<input type="text"/>
d. 8 to 30 days.	<input type="text"/>	<input type="text"/>
e. 31 to 180 days.	<input type="text"/>	<input type="text"/>
f. More than 180 days.	<input type="text"/>	<input type="text"/>
g. TOTAL (Sum of items II.10a to II.10f should equal item II.9b).	<input type="text"/>	<input type="text"/>

Section III — POPULATION SUPERVISED IN THE COMMUNITY**If item I.1b equals 0 (zero), SKIP to item IV.1****III.1. On June 29, 2012, how many persons under your jail supervision who were NOT CONFINED, participated in —**

- EXCLUDE inmates on weekend programs.

- a. Electronic monitoring.** . . .
- b. Home detention without electronic monitoring.** . . .
- c. Community service.**
- d. Day reporting.**
- e. Other pretrial supervision.**
- f. Other alternative work programs.**
- EXCLUDE inmates participating in work release programs who return to the jail at night.
- g. Alcohol/drug treatment programs.**
- EXCLUDE inmates participating in alcohol/drug treatment programs who are confined in the jail.
- h. Other programs outside of jail facilities — Specify**
- i. TOTAL** (Sum of items III.1a to III.1h should equal item I.1b). . .

III.2. On June 29, 2012, how many persons under your jail supervision who were NOT CONFINED were —

- a. Adult males** (age 18 or older) ☐
- b. Adult females** (age 18 or older) ☐
- c. Males under age 18.** ☐
- d. Females under age 18.** ☐
- e. TOTAL** (Sum of items III.2a to III.2d should equal item I.1b) . . . ☐

III.3. Of all persons under your jail supervision who were NOT CONFINED on June 29, 2012, how many were —

- a. Convicted.** ☐
- b. Unconvicted.** ☐
- c. TOTAL** (Sum of items III.3a and III.3b should equal item I.1b) . . . ☐

Section IV — STAFF SAFETY AND SECURITY**IV.1. On June 29, 2012, how many staff employed by your jail were —**

- Count each employee only once. Classify employees with multiple functions by the function performed most frequently.
- INCLUDE only payroll and nonpayroll staff.
- EXCLUDE staff paid through contractual agreements and community volunteers.

- a. Correctional Officers**
(Deputies, monitors, and other custody staff who spend more than 50% of their time with the incarcerated population.) ☐
- b. All other staff**
(Administrators, clerical and maintenance staff, educational staff, professional and technical staff, and other staff unspecified.) ☐
- c. Total** (sum of items IV.1a and IV.1b) ☐

IV.2. During the 366-DAY period from July 1, 2011 to June 30, 2012, were there any inmate-inflicted physical or sexual assaults on facility staff in your jail?

- Report any assaults that involved a weapon or serious injury requiring immediate medical attention more extensive than first aid.

1 ☐ Yes —

Number of assaults on —

a. Correctional Officers ☐b. All other staff ☐2 ☐ No assaults**IV.3. During the 366-DAY period from July 1, 2011 to June 30, 2012, were there any staff deaths as a result of assaults by inmates?**1 ☐ Yes —

Number of deaths —

a. Correctional Officer deaths inflicted by inmates ☐b. All other staff deaths inflicted by inmates ☐2 ☐ No deaths**IV.4. During the 366-DAY period from July 1, 2011 to June 30, 2012, how many persons CONFINED in your jail were written up or found guilty of —**

- a. Physical assault on another inmate.** ☐
- b. A drug violation, such as use, possession, or dealing drugs.** ☐
- c. An alcohol violation, including unauthorized possession, use, or sale.** ☐
- d. Possession of a weapon.** ☐
- e. Possession of stolen property.** ☐
- f. Escape or attempted escape.** ☐
- g. Any other major violation, including work slowdowns, food strikes, setting fire, rioting, etc.** ☐